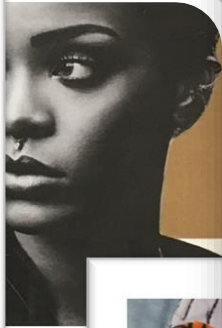
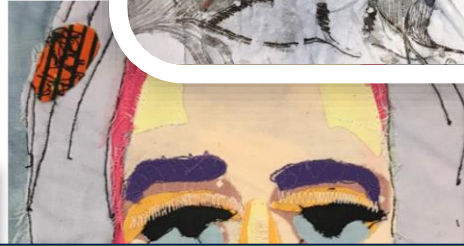


# TEXTILES WORK OF THE WEEK

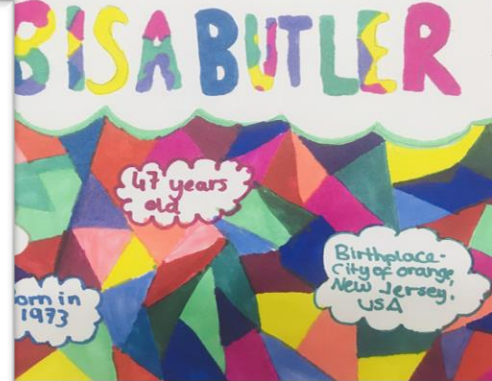
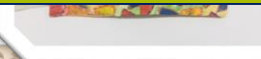
30 November - 4 December



→ I made this mask  
inspired by the colors of  
the city of Orange, New Jersey.  
I hope you like it!  
Bisa Butler



→ The mask  
it is  
named  
inspiration, I chose Beyoncé  
to do a print.  
→ I manipulated the  
impression of Beyoncé, adding  
her facial expressions and  
different tones, that was  
expressed in the image.



# Year 7: Artist research (Bisa Butler)

Akshara  
7V

# BISA BUTLER

Her mother was French teacher from New Orleans and her father, a college president, was born in Ghana.

There are the children and Peoples.

In the coming months, more and more of the public will have a chance to experience Butler's work.

American History; the Epitome Center, the National Underground Railroad Freedom Center and other venues.

They use Brooklyn-based, previously brightly colored cotton, wool, and chiffer fabrics with old patterns to piece together quilts featuring detailed portraits of black people.

There are some Mankhur State.

There Produce artist.

Artist Bisa Butler draws from an array of vibrant patterned fabrics to create portraits of everyday people. She chooses representative colors, favoring layered jewel tones that flow from the skin out to her Black subjects and often is coaxed figures together into strong silhouettes.

Bisa Butler (born 1973) is an American fiber artist known for her quilted portraits and designs celebrating Black life.

Professional Artist  
Education: Columbia High School, Howard  
Nationality: American  
Place of birth: Orange, New Jersey



## Year 7: Artist research (Bisa Butler)

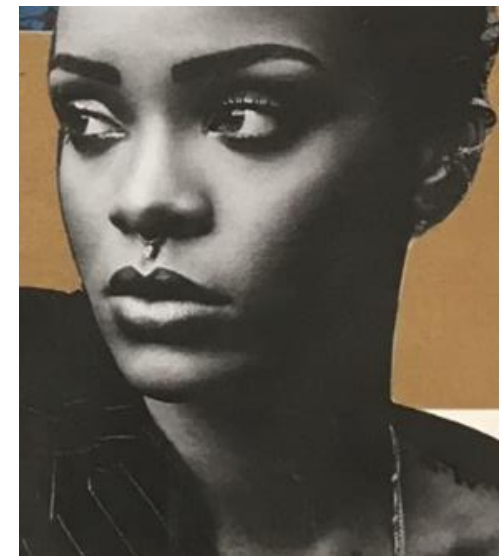
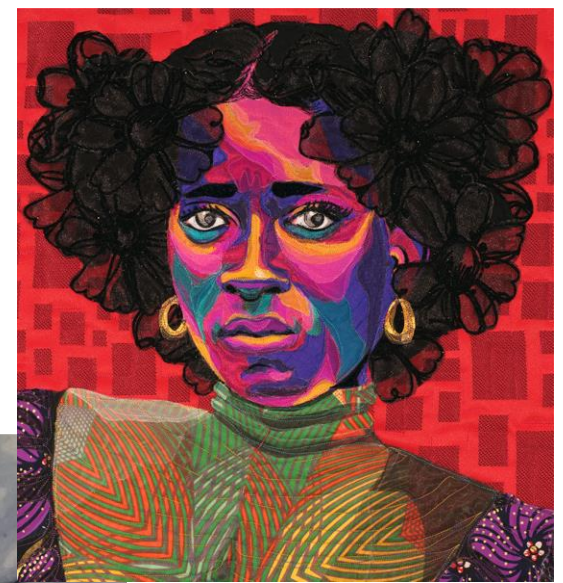
Aizah 7V





**Year 12:** The students made fabric collages of inspirational black women in the style of artist **Bisa Butler** →

Hetal





# Pratiksha



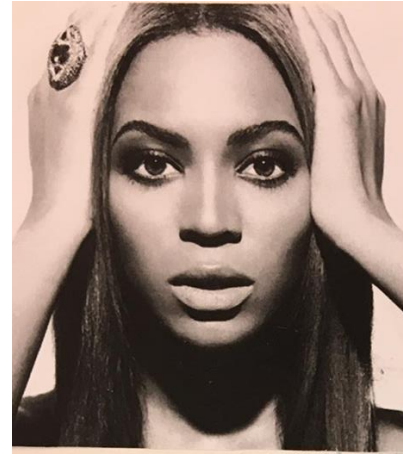


# Krinali





# Tania



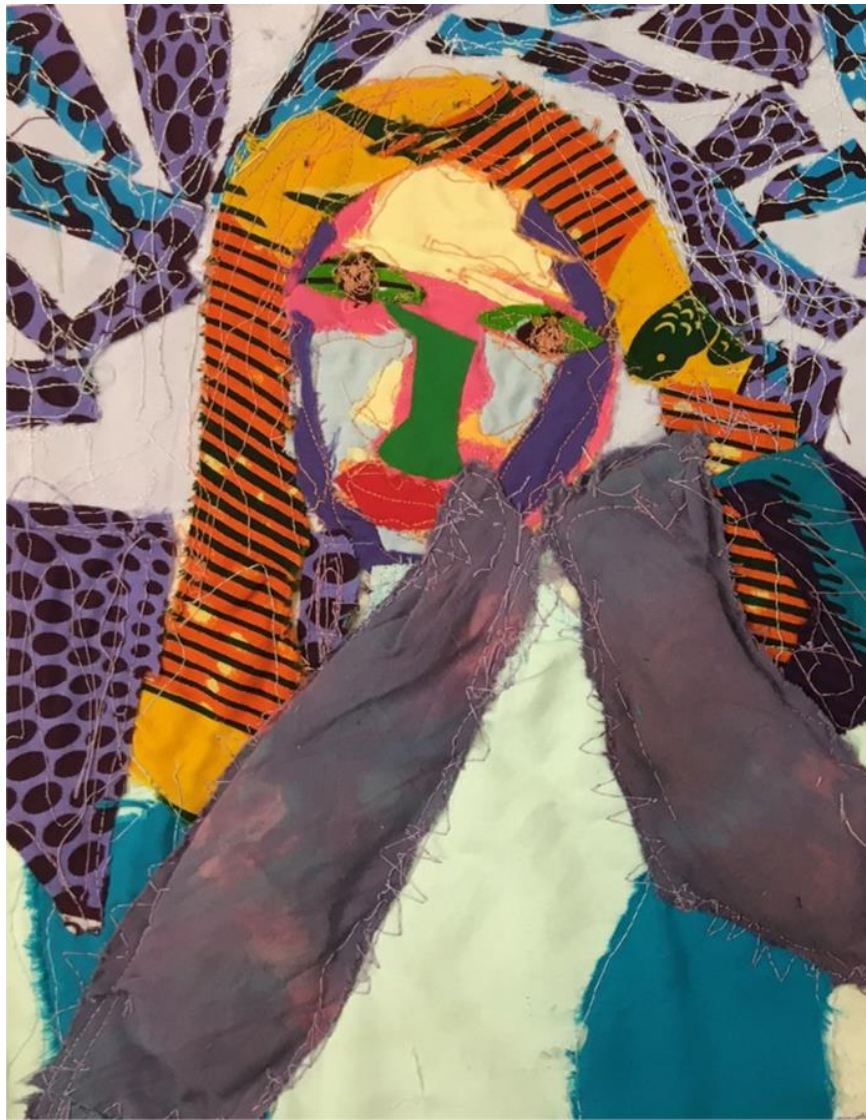
→ This piece of portrait, is made by mono-printing, and it is inspired by the artist name biso Butler using her inspirations, I chose Beyonce to do a print.

→ I mono-printed the impression of Beyonce, adding her facial expressions and different tones, that I was expressed in the image.





# Najmo





Janani





## Year 12: Design and Making facemasks



Krinali LS2



Hetal LS2



Pratiksha LS5



Tania LS5



## Year 8: Batik painting



Krrish 8X



Umaima  
8Y