

Christmas Trees in England

9 The Christmas tree is often depicted as a pine,
18 spruce or fir tree with lights and ornaments hanging
26 from its branches. The decorating of the Christmas
35 tree is widely considered a large part of Christmas
36 celebrations.

45 Prince Albert is often given credit for introducing the
54 Christmas tree to England in 1840. However, it was
64 Queen Charlotte who set up the first known tree in
70 1800 at Queen's Lodge in Windsor.

76 Since 1947, Norway has given the
82 people of London a large Christmas
90 tree and it is put on display in
96 Trafalgar Square. This gift is given
103 as a token of gratitude for the
108 assistance the British gave the
112 Norwegian king and government
117 during the Second World War.



Questions



1. Find and copy one word which means the same as 'praise'.



2. Which of the following trees is not mentioned in the text? Tick one.

- pine
- fir
- oak



3. Why do you think Christmas trees have become a huge part of festive celebrations?



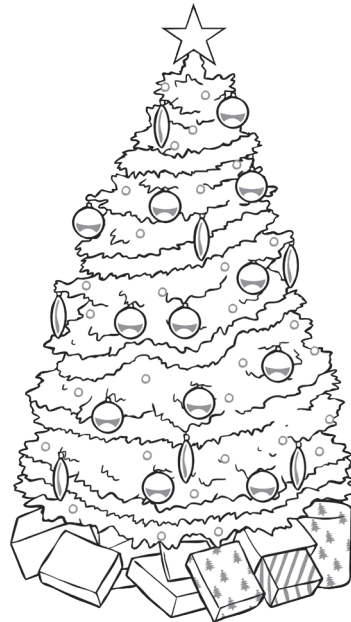
4. Why might someone choose to read this text?

Christmas Trees in England

9 The Christmas tree is often depicted as a pine,
18 spruce or fir tree with lights and ornaments hanging
26 from its branches. The decorating of the Christmas
35 tree is widely considered a large part of Christmas
36 celebrations.

45 Prince Albert is often given credit for introducing the
54 Christmas tree to England in 1840. However, it was
64 Queen Charlotte who set up the first known tree in
70 1800 at Queen's Lodge in Windsor.

76 Since 1947, Norway has given the
82 people of London a large Christmas
90 tree and it is put on display in
96 Trafalgar Square. This gift is given
103 as a token of gratitude for the
108 assistance the British gave the
112 Norwegian king and government
117 during the Second World War.



Answers



1. Find and copy one word which means the same as 'praise'.

credit



2. Which of the following trees is not mentioned in the text? Tick one.

pine

fir

oak



3. Why do you think Christmas trees have become a huge part of festive celebrations?

Pupils' own responses, such as: I think it is because the Royal Family put Christmas trees up initially and people wanted to be like them.



4. Why might someone choose to read this text?

Pupils' own responses, such as: I think someone would read this text if they wanted to know more about the history of Christmas trees in England.