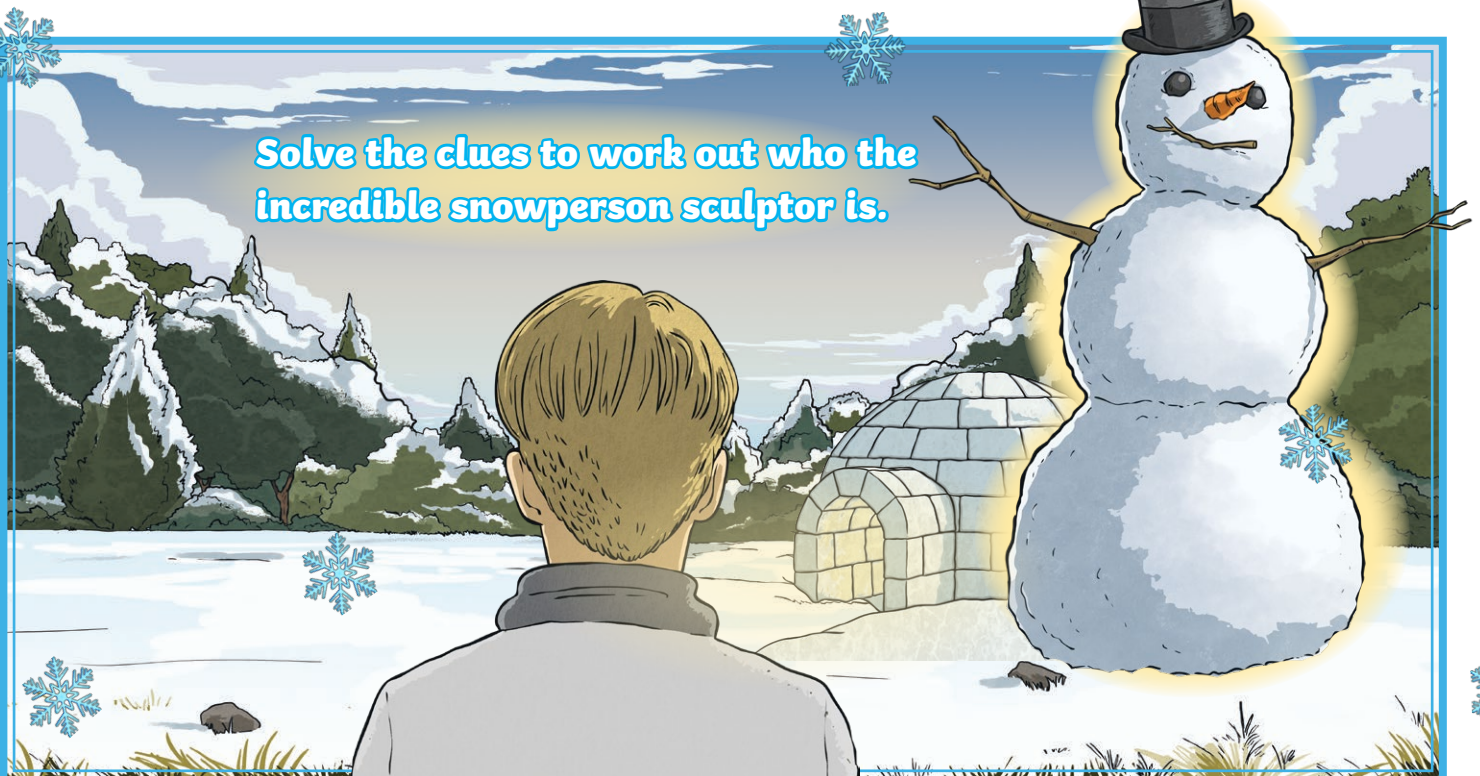


The Mystery of the Incredible Snowperson Sculptor Maths Mystery Game

It is a snowy Saturday and you are incredibly excited because you can spend all day playing in the snow. Quickly, you gather your friends and your older siblings and trudge up the hill to the snowiest field in town. There are lots of other children there too. You spend all day playing on the field: making snow angels, sledging down the slope, having a huge snowball fight and building a small igloo together. Many other children are enjoying themselves and a lot of them are building snow sculptures. You are exhausted so you decide to head home early and get a great night's sleep.

The next day, you head back up the hill to see what the snow is like today. To your amazement, built right next to your igloo, is a huge snowperson towering above all of the other snowpeople on the field. It is so tall, so impressive, so detailed and so beautifully sculptured that you cannot keep your eyes off it. It has a lovely hat, perfect stones for eyes and the carrot for the nose is just right! You are desperate to find out who built it so that you can join them in building another one the next time it snows.

Solve the clues to work out who the incredible snowperson sculptor is.



Child's Name	Wore a Hat	Distance They Live from the Field (metres)	Age	Footwear	Number of Friends Who Helped
Jan	yes	110	12	wellies	1
Viola	yes	621	9	wellies	3
Heath	no	357	8	trainers	2
Christy	yes	481	12	wellies	1
Hamza	yes	293	10	wellies	2
Eliana	no	94	13	snow boots	0
Habakkuk	yes	438	15	wellies	3
Faraji	no	281	11	wellies	4
Xavier	yes	1406	9	trainers	1
Lance	yes	694	7	snow boots	0
Clare	yes	647	11	wellies	2
Cecilia	no	261	14	snow boots	4
Benito	yes	369	10	wellies	3
Hua	yes	749	9	trainers	4
Paulo	yes	507	13	wellies	2
Yara	no	886	7	wellies	1
Ingrid	yes	893	13	snow boots	2
Sam	yes	211	8	wellies	3
Christian	yes	973	11	wellies	0
Oba	yes	382	10	snow boots	2
Hector	no	589	14	wellies	1
Liling	yes	470	7	trainers	3
Connor	yes	1702	10	wellies	4
Jeff	yes	324	15	wellies	3
Santiago	no	543	8	snow boots	0



Clue 1: Partitioning Maze



Starting from the top left-hand corner, find a path through the maze to reveal the answer about what footwear the incredible snowperson sculptor wore.

You can only move horizontally or vertically, not diagonally. Find the even missing numbers or values to move through the maze. If the missing number or value is an odd number, you have to find another path.

<p>START</p>		
<p>$408 = 400 + \underline{\quad}$</p>		
	<p>$209 = 200 + \underline{\quad}$</p>	
<p>$\underline{\quad} = 200 + 0 + 4$</p>		<p>$863 = \underline{\quad} + 60 + 3$</p>
	<p>$785 = 700 + 80 + \underline{\quad}$</p>	
<p>snow boots</p>	<p>trainers</p>	<p>wellies</p>

Clue 1: The incredible snowperson sculptor wore .

Clue 2: True or False?

Look at the table and decide if every statement in the row is true or false. If there are more true rows, the incredible snowperson sculptor wore a hat. If there are more false rows, the sculptor did not wear a hat.

100 Less than the Number	10 Less than the Number	1 Less than the Number	Number	1 More than the Number	10 More than the Number	100 More than the Number	True or False?
400			500	501			
823			923		933		
		106	107			207	
	644	653			664		
795		894		896		995	

Clue 2: The incredible snowperson sculptor a hat.

Clue 3: Ordered Numbers

Each set of numbers has been ordered in ascending or descending order. Find the missing digit in each group. Then, arrange the digits in ascending order and insert them into the sentence to reveal the answer to clue 3.

	Missing Digit
542 522 5_3 505 487	
54 168 185 _39 308	
262 7_ 78 58 3	
951 830 745 _82 591	
381 _73 562 786 901	
904 779 77_ 777 721	

The missing digits in ascending order are _____.

Clue 3: The incredible snowperson sculptor lives between and metres from the field.

Clue 4: Correct Addition and Subtraction

Which of these written addition and subtraction calculations have been completed correctly? The number of calculations with the correct answer is the number of friends who helped the incredible snowperson sculptor.

	H	T	O
	6	0	9
+		7	3
	6	7	2
		1	

	H	T	O
	3	5	8
+	2	6	1
	6	1	9
	1		

	H	T	O
	2	6	1
-		5	5
	2	2	7

	H	T	O
	3	3	8
+	5	2	6
	8	7	4
		1	

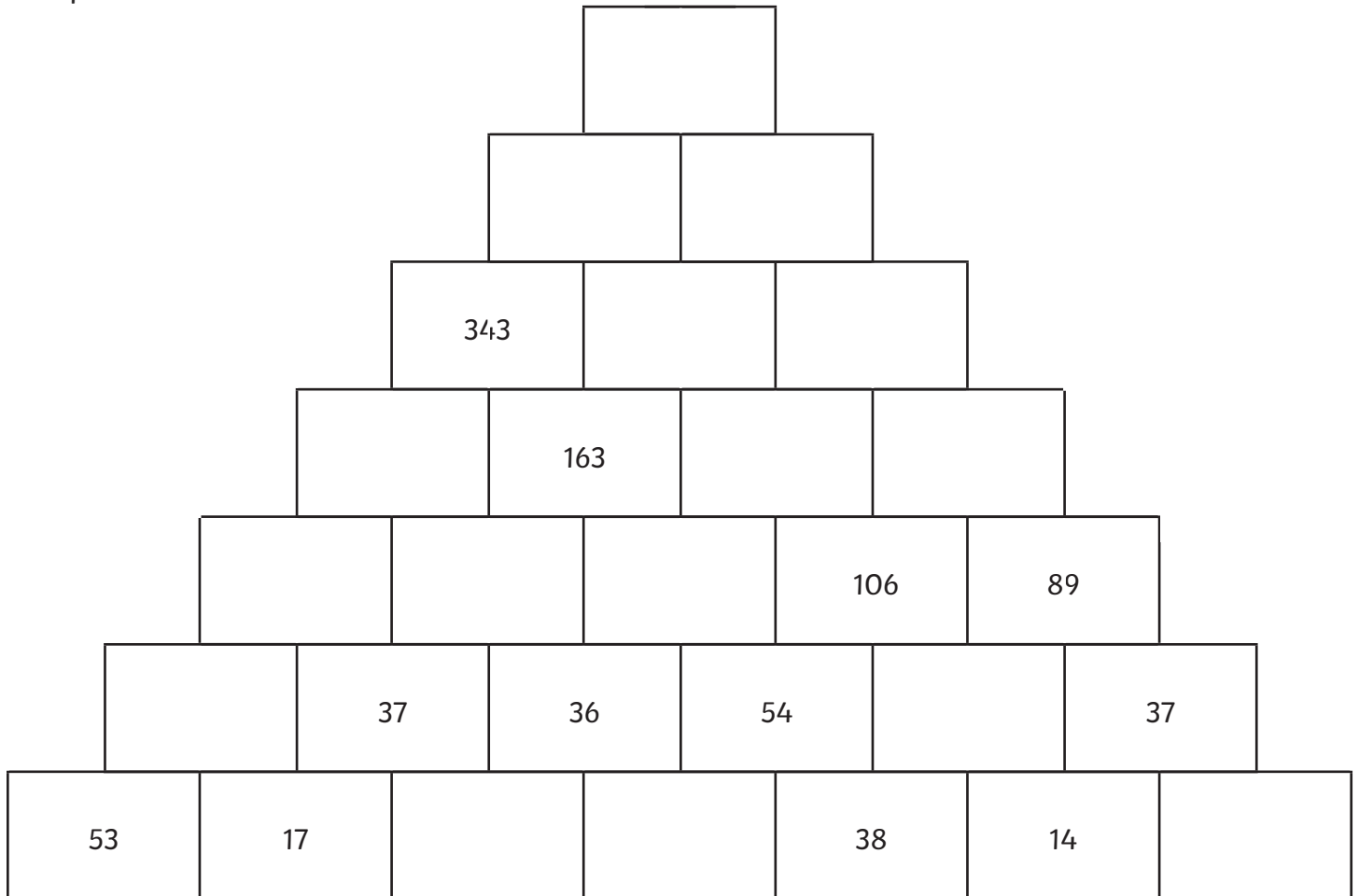
	H	T	O
	6	4	3
-	1	7	1
	5	3	2

	H	T	O
	5	1 4	5
-	2	9	2
	3	5	3

Clue 4: The incredible snowperson sculptor had friends who helped.

Clue 5: Addition and Subtraction Pyramid

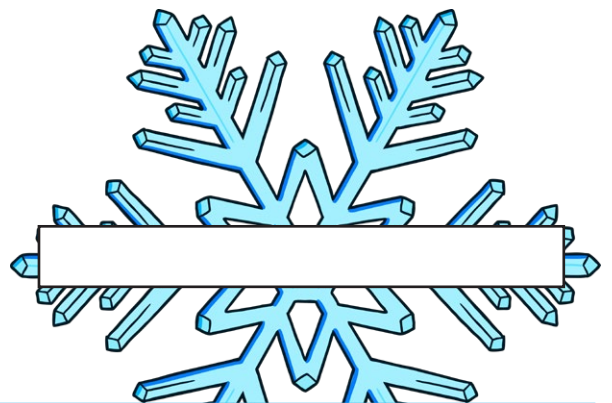
In this number pyramid, each number is the sum of the two numbers below. Use addition and subtraction to complete the pyramid and work out the missing numbers. The number of odd numbers in the completed pyramid will reveal the age of the incredible snowperson sculptor.



There are _____ odd numbers.

Clue 5: The incredible snowperson sculptor is years old.

Your investigation is complete.
The incredible snowperson sculptor is



Clue 1: Partitioning Maze Answers

START		
$408 = 400 + 8$		
	$209 = 200 + 9$	
$204 = 200 + 0 + 4$		$863 = 800 + 60 + 3$
	$785 = 700 + 80 + 5$	
snow boots	trainers	wellies

Clue 1: The incredible snowperson sculptor wore **wellies**.

Clue 2: True or False? Answers

100 Less than the Number	10 Less than the Number	1 Less than the Number	Number	1 More than the Number	10 More than the Number	100 More than the Number	True or False?
400			500	501			true
823			923		933		true
		106	107			207	false
	644	653		664			false
795		894		896		995	true

Clue 2: The incredible snowperson sculptor **wore** a hat.

Clue 3: Ordered Numbers **Answers**

	Missing Digit
542 522 513 505 487	1
54 168 185 239 308	2
262 79 78 58 3	9
951 830 745 682 591	6
381 473 562 786 901	4
904 779 778 777 721	8

The incredible snowperson sculptor lives between **124** and **689** metres from the field.

Clue 4: Correct Addition and Subtraction

Answers

	H	T	O
	6	0	9
+		7	3
	6	7	2
		1	

	H	T	O
	3	5	8
+	2	6	1
	6	1	9
	1		

	H	T	O
	2	6	¹ 2
-		5	5
	2	2	7

	H	T	O
	3	3	8
+	5	2	6
	8	7	4
		1	

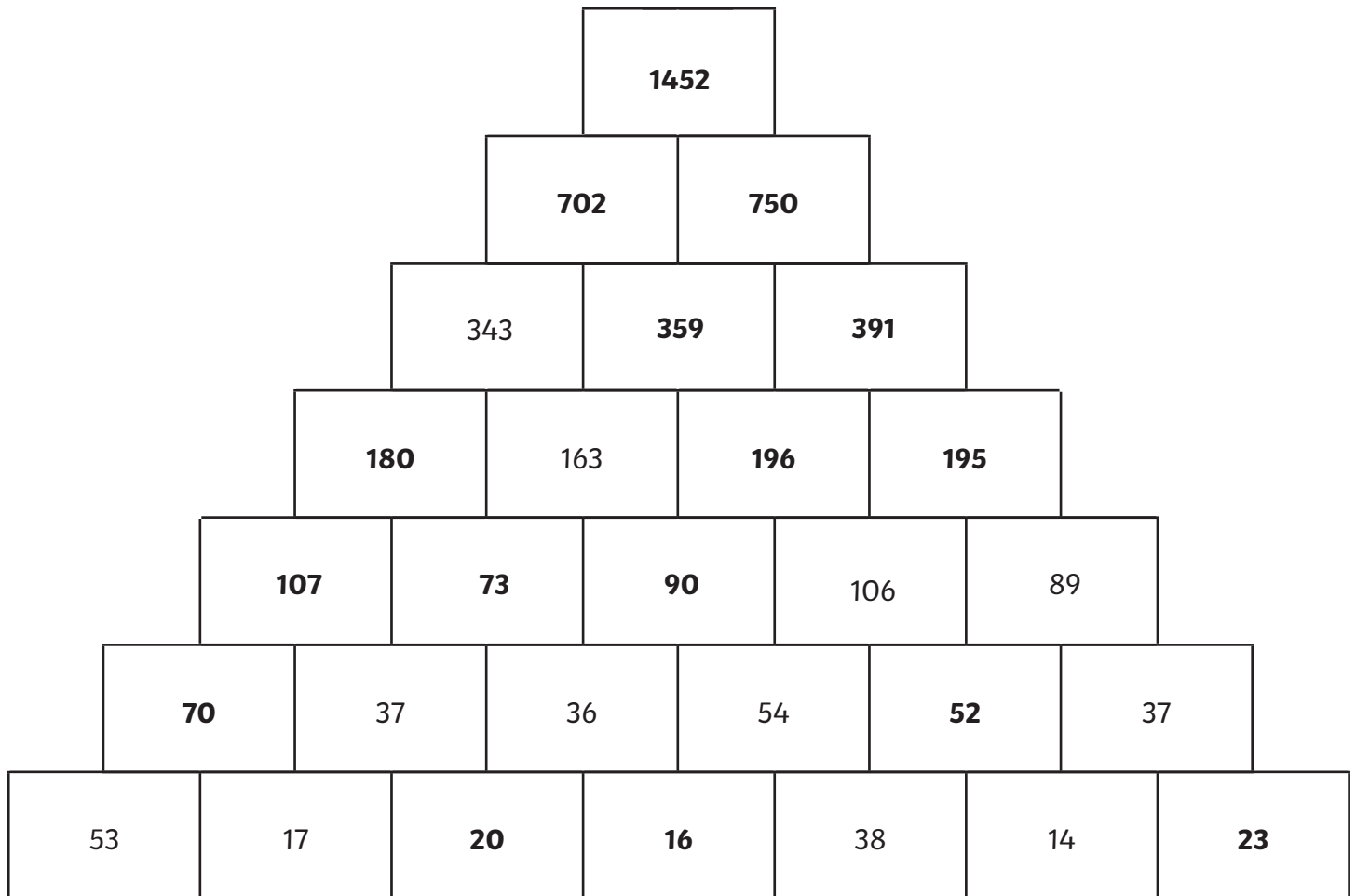
	H	T	O
	6	4	3
-	1	7	1
	5	3	2

	H	T	O
	⁵ 6	¹ 4	5
-	2	9	2
	3	5	3

Clue 4: The incredible snowperson sculptor had **2** friends who helped.

Clue 5: Addition and Subtraction Pyramid

Answers



There are **13** odd numbers.

Clue 5: The incredible snowperson sculptor is **13** years old.

Your investigation is complete.
The incredible snowperson sculptor is **Paulo**