

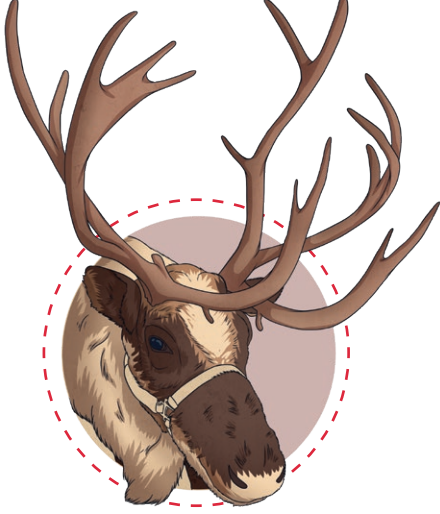
The Mystery of the Replacement Reindeer

Christmas is fast approaching and Father Christmas is making final preparations before he sets off to deliver presents all over the world. Unfortunately, Rudolph is coughing and sneezing and his nose will not light up. Father Christmas needs another reindeer to replace Rudolph to make sure that everyone's presents get delivered in time.

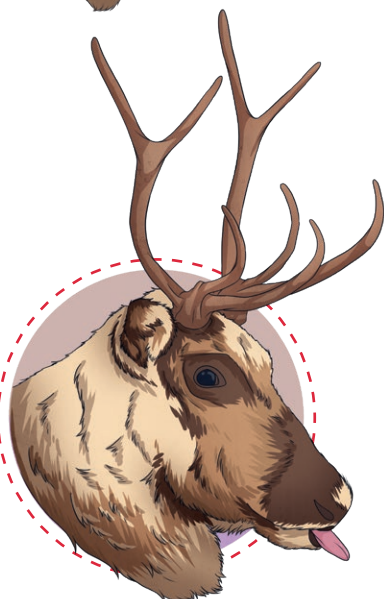
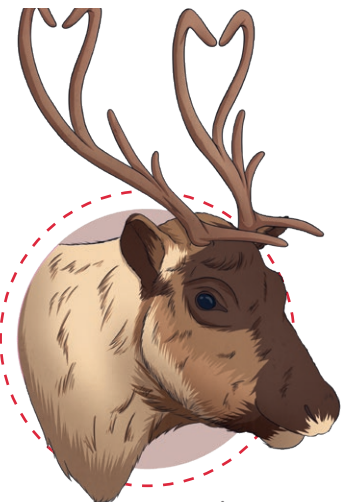
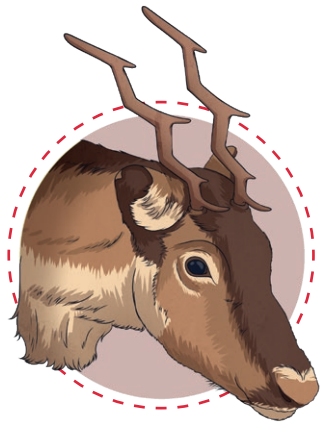
Luckily, a herd of reserve reindeer live in the North Pole in case of such an emergency but who will Father Christmas choose to replace Rudolph?



Can you solve the clues to find out which reindeer will replace him?



Name	Top Speed	Favourite Food	Age	Antler Length	Special Power
Bubbles	59mph	apples	8	87cm	super strength
Peanut	46mph	carrots	5	114cm	invisibility
Kicker	58mph	mushrooms	11	68cm	invisibility
Diamond	61mph	oats	7	59cm	super strength
River	45mph	sprouts	3	105cm	invisibility
Star	48mph	carrots	16	78cm	super strength
Bolt	52mph	mushrooms	10	90cm	super strength
Rocky	63mph	oats	4	103cm	invisibility
Pluto	57mph	apples	6	86cm	super strength
Zippy	54mph	sprouts	13	84cm	night vision
Lola	48mph	mushrooms	15	56cm	super strength
Storm	62mph	mushrooms	9	73cm	night vision
Rosie	51mph	oats	2	109cm	night vision
Reggie	55mph	sprouts	4	91cm	invisibility
Flossy	49mph	apples	17	65cm	invisibility
Freckles	54mph	apples	10	80cm	night vision
Sparkle	60mph	sprouts	12	117cm	super strength
Barnaby	49mph	apples	6	75cm	invisibility
Cracker	46mph	carrots	18	80cm	night vision
Racer	52mph	oats	13	54cm	super strength
Belle	48mph	carrots	7	99cm	invisibility
Glossy	51mph	apples	8	109cm	night vision
Pudding	62mph	sprouts	5	71cm	night vision
Bouncer	55mph	mushrooms	11	63cm	super strength



Clue 1: Add and Subtract Numbers

Starting at 46, follow the arrows and the maze and solve each calculation as you go. Write your final answer in the 'END' square. Your answer will match to a corresponding clue.

The column method or base ten might help you solve the calculations.

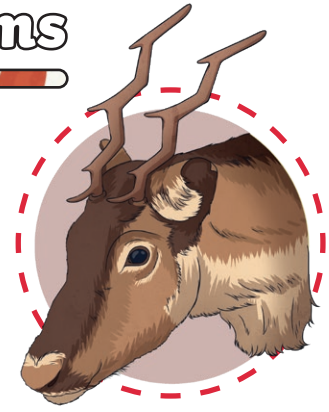


START 46	+ 10	+ 8	- 24	+ 170
- 406	- 57	+ 201	+ 41	- 86
+ 732	- 229	END	- 308	+ 204
- 99	- 194	+ 63	+ 518	- 291
- 640	+ 367	- 80	+ 426	+ 78

908 56mph	659 53mph	450 50mph	221 47mph
--------------	--------------	--------------	--------------

Clue 1: The reindeer's top speed is greater than _____.

Clue 2: Solving Missing Number Problems



Find the missing numbers in these calculations and cross out the matching number in the table below. The remaining number will reveal a clue about what the replacement reindeer likes to eat.

The column method, base ten or the inverse operation might help you solve the calculations.

$$86 + 207 = \square$$

$$75 + 125 + 50 = \square$$

$$\square - 97 = 151$$

$$426 - 165 = \square$$

$$124 + 152 = \square$$

$$570 - \square = 286$$

$$84 + \square = 323$$

$$\square - 178 = 79$$

261 carrots or mushrooms	257 sprouts or apples	276 oats or carrots
248 carrots or apples	284 apples or oats	293 mushrooms or sprouts
239 oats or sprouts	247 mushrooms or apples	250 carrots or sprouts

Clue 2: The reindeer's favourite food is _____ or _____.

Clue 3: Checking Answers



Identify whether these mathematical statements are true or false and tick the correct column.

If there are more true answers, the reindeer's age is an **odd number**.

If there are more false answers, the reindeer's age is an **even number**.

The column method, base ten or the inverse operation might help you solve the calculations.

	True	False
$70 + 2 = 702$		
$431 - 85 =$		
+ $762 = 807$		
$500 + 10 + 6 = 561$		
- $= 277$		
$634 = 391 + 343$		
$876 - 93 = 969$		
$529 - 218 = 62 + 249$		
$204 -$ $= 136$		
Total		

Clue 3: The reindeer's age is an _____.

Clue 4: Solving Missing Number Problems



Solve each calculation and match the answer to its corresponding letter. Once all calculations have been solved, a clue will be spelt out.

The column method, base ten or the inverse operation might help you solve the calculations.

$140 + 160 = \square$	$472 - \square = 61$	$27 + 144 = \square$	$835 - 678 = \square$	$\square - 51 = 551$
$\square + 33 = 950$	$705 - \square = 534$	$183 + 62 = \square$	$\square - 250 = 248$	$166 + \square = 983$
	$543 + \square = 700$	$\square - 54 = 191$	$208 + 527 = \square$	

A	B	C	D	E	F	G	H	I	J	K	L	M
137	884	748	927	245	817	488	117	602	705	533	171	300
N	O	P	Q	R	S	T	U	V	W	X	Y	Z
735	498	917	100	372	200	157	411	872	261	592	948	653

Clue 4: The length of the reindeer's antler is a _____.

Clue 5: Column Addition and Subtraction



Find the missing digit in each calculation to make it correct. Match the missing digit to its corresponding letter and then rearrange the words to reveal the final clue.

Using column method or the inverse operation might help you solve the calculations.

	<input type="text"/>	0	4
-	7	3	5
	1	6	9

	5	<input type="text"/>	8
+	2	8	7
	8	0	5

	4	2	7
+	1	<input type="text"/>	6
	5	5	3

	3	5	1
+	3	9	5
	<input type="text"/>	4	6

	7	4	2
-	1	8	6
	5	5	<input type="text"/>

	8	9	3
-	5	0	<input type="text"/>
	3	8	5

8 night vision	4 not	1 reindeer's
2 the	6 special	9 is
3 super	7 power	5 super strength

Clue 5: _____

The replacement reindeer is _____

