

CONVERT POUNDS AND PENCE



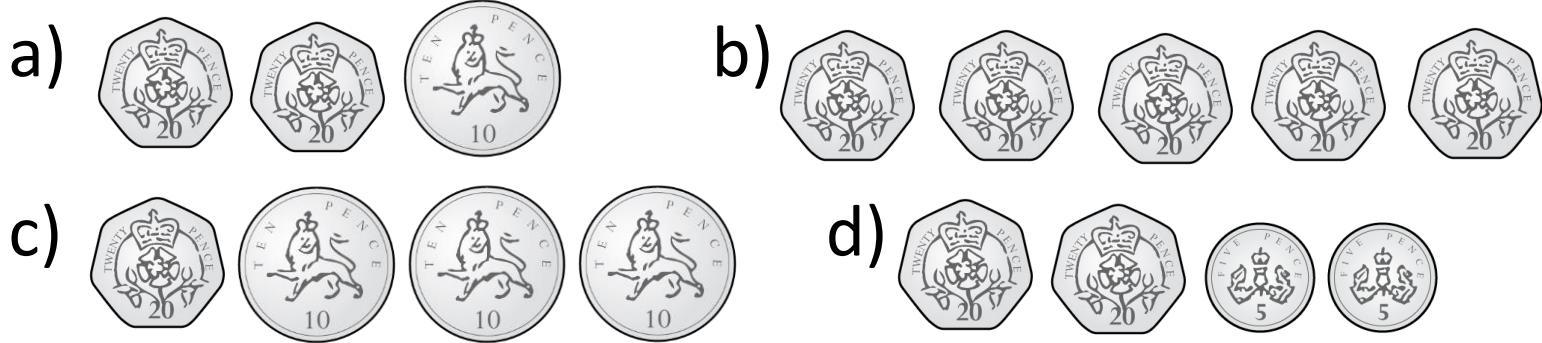
GET READY



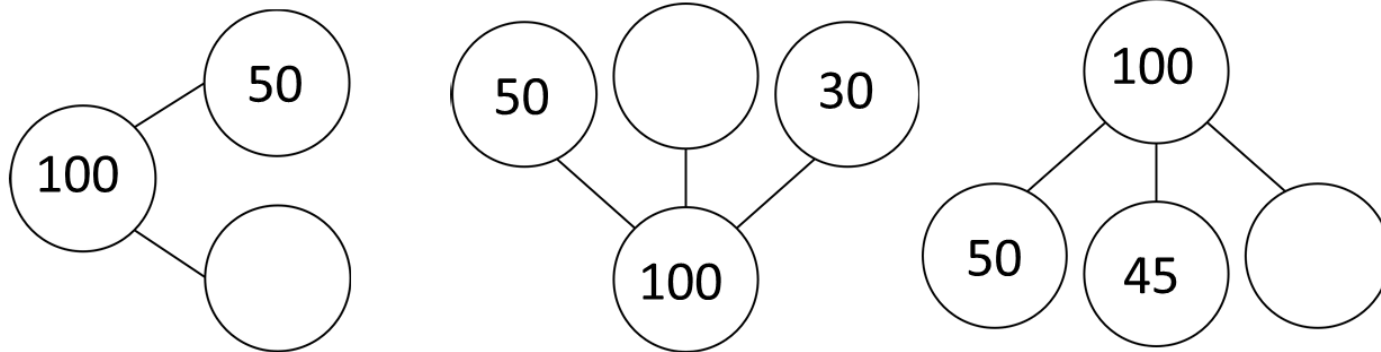
1) How much does Ron have?



2) Which sets of coins total 50p?



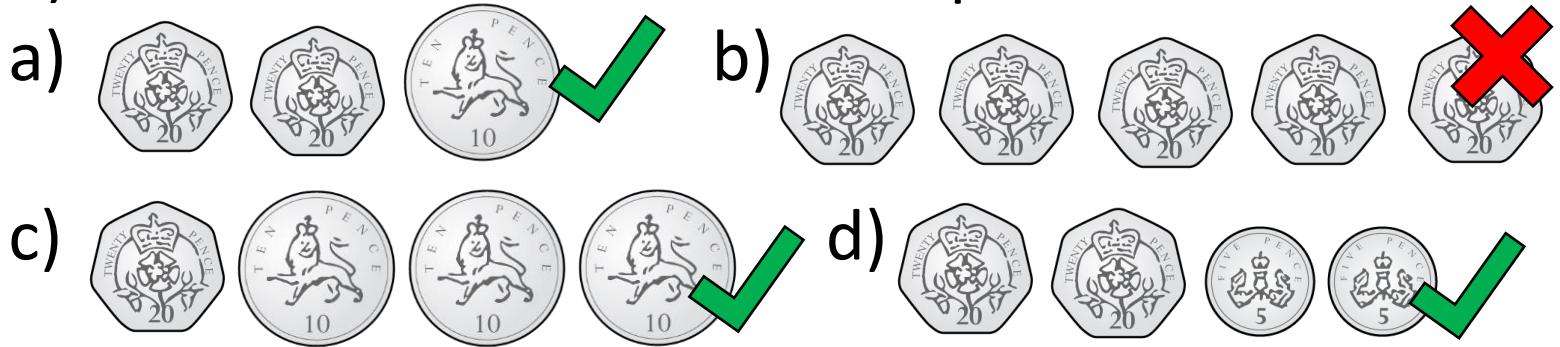
3) Complete the part-whole models.



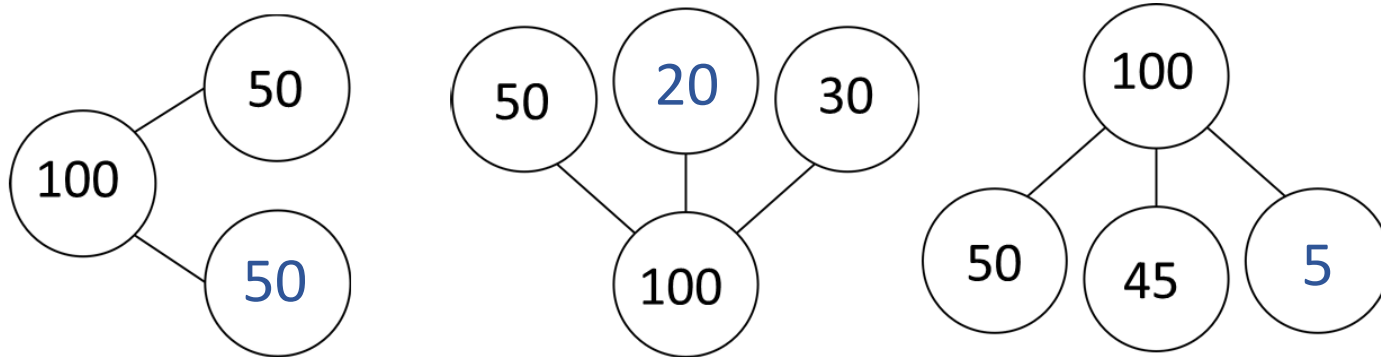
1) How much does Ron have?



2) Which sets of coins total 50p?



3) Complete the part-whole models.

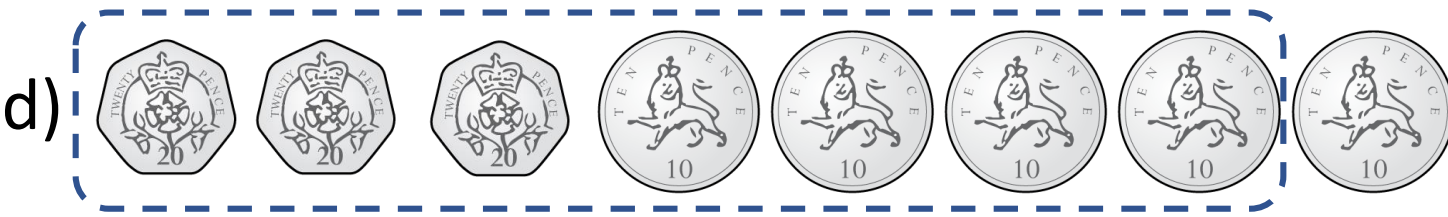
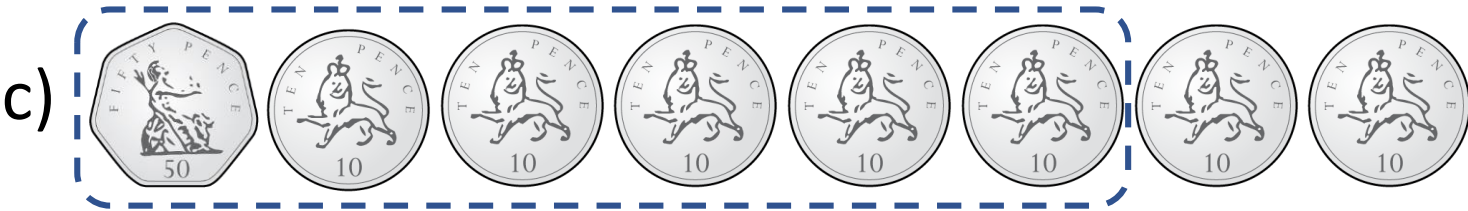


LET'S LEARN



Circle £1 in each set.

£1 = 100p



Tiny is exploring different ways to make £1

$$£1 = 100p$$

I think I have lost a coin from each set.



$$50p + \square = 100p$$



$$50p + 20p + 10p + \square = 100p$$

80p

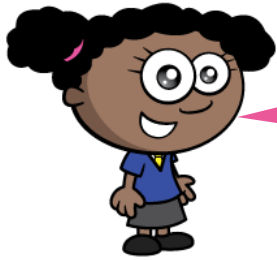


$$50p + 20p + 10p + 10p + 5p + \square = 100p$$

95p

Have a think





I wonder if I can make £1 using exactly
1 coin, 2 coins, 3 coins and 4 coins

1 coin



2 coins



3 coins



4 coins



What about 5 coins, 6 coins and so on?

Have a think



YOUR TURN

Have a go at questions 1
and 2 on the worksheet



How much does Rosie have?



£1

I can see ~~82p~~ 82p 50 pence coins. They make £1



Rosie has £1 and 82p

Rosie has 182p

How much does Rosie have?



£1

£1

12p

Rosie has £2 and 12p

Have a think
Rosie has 212p



How much does Rosie have?



£1

£1

£1

7p

Rosie has £3 and 7p

Have a think
Rosie has 307p



£1 and 50p

105p

£5 and 50p

501p

£1 and 5p

150p

£5 and 1p

550p

YOUR TURN

Have a go at the rest of
the questions on the
worksheet

