



# Blackwood Comprehensive School Curriculum for Wales 2023





*Blackwood Comprehensive School is an inclusive school community where we use the power of learning and teaching to develop confident, happy, resilient, and independent learners. In our safe, secure, and nurturing learning environment, everyone is valued equally, and positive relationships ensure that, by working together, we raise aspirations, realise our potential and secure our future.*



cynefin responsible inform collaborate  
 nurture  
 collaboration nurture  
 learning inclusive inspire growth  
 aspiration trust innovate community achieve  
 resilience celebrate aspirational challenge empower  
 enrich  
 succeeding respect confident include

***'Our intent is to develop an equitable curriculum for all through strong collaboration'***



# Blackwood Cluster Vision

**All schools within the Blackwood Cluster are committed to developing:**

- A sense of pride in our collective Heritage, Culture and language of Wales and encompassing a sense of 'Cynefin';
- Our whole school communities to consider the sustainability of our planet and the impact we all have ;
- A collective Ethos, where our learners, staff and wider community feel safe secure respected and valued;
- An environment that promotes preparation for lifelong learning through authentic, innovative and enriching experiences;





The Curriculum for Wales will be compulsory for Years 7 and 8 from September 2023 and will have two hierarchies:

- A national level curriculum, which will be defined by Welsh government.
- A school level curriculum, which will follow the national-level curriculum, but will be developed and planned by teachers in individual schools and in clusters.

The Curriculum for Wales won't be biased towards either knowledge or skills, but will allow schools to provide a balance of knowledge, skills and experiences, which enable learners to have the necessary characteristics and attributes to be successful when they leave us.

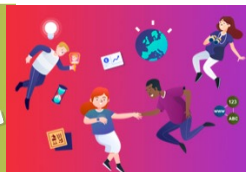
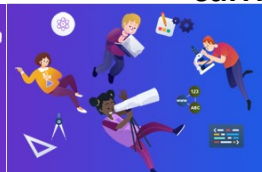
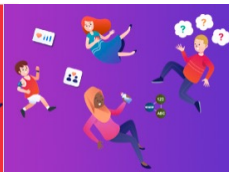




## The Curriculum for Wales consists of six Areas of Learning and Experience (AoLEs):

- Expressive arts incorporating art, dance, drama and music. It will encourage creativity and critical thinking, and include performance.
- Humanities: incorporating geography, history, RE, business studies and sociology. It will be based on human experiences and will also cover Welsh culture.
- Health and wellbeing: this covers the physical, psychological, emotional and social aspects of life, helping learners make informed decisions about their health and wellbeing and learn how to manage social influences. This AoLE permeates across the curriculum and is reinforced in our Health and Wellbeing lesson 1 and PSHE.
- Science and technology incorporating biology, chemistry, physics, computer science, and design and technology.
- Mathematics and numeracy, which will include working both independently and collaboratively with others.
- Languages, literacy and communication: this will include Welsh, English and international languages. Welsh language teaching will still be compulsory.

**Additionally, literacy, numeracy and digital skills will be embedded across the curriculum.**





## Non-curriculum areas

- Relationships and Sexuality Education: RSE is mandatory in all maintained schools. Parents and carers will no longer be allowed to withdraw their child from these lessons.
- The focus will be on building relationships based on mutual trust, and developing mental and emotional wellbeing, resilience and empathy.
- The Welsh government will issue guidance to schools on how to provide RSE that is age-appropriate and relevant to pupils' developmental stage, but it will give schools the flexibility to design their own programme of teaching that reflects diversity and difference in relationships, sex, gender and sexuality. Our RSE policy is available on our website.
- Religious education: RE will continue to be compulsory, as it is at the moment, with an agreed syllabus.







# Blackwood Comprehensive School

## Journey to 2023

2016

2016 Strand 1 Pioneer School

2017/2018

2017/2018 Strand 2 Pioneer School – Expressive Arts

2019

September 2019 – 3 Year Expressive Arts Curriculum established

2019

September 2019 – 'Successful Futures' meetings as part of the school meeting cycle.

2019

September 2019 – Llywddo Nurture Provision Established – CfW trials with Humanities and Languages (Cymraeg & IL)

Continuous Professional Development – 4 Purposes, WMs, 12PPs (Rosenshine), Assessment & Progression

2021

September 2021 – AoLE meetings as part of the school meeting cycle.  
Autumn Term 2021 – engagement with EAS/ Jubilee Park Progression and Assessment Work

2022

Summer Term 2022 – Cluster Curriculum Design Work / AoLE trials with Yr 7  
Summer Term 2022 - appoint 3 CfW Champions to develop excellent pedagogy, AoLE working and Progression & Assessment

2022

Autumn Term 2022 – Co-construction of Curriculum Intent

2022/2023

Academic Year 2022/23 – AoLEs to continue trialling CfW with Year 7

September 2023

September 2023 – Year 7 & 8 CfW

2023

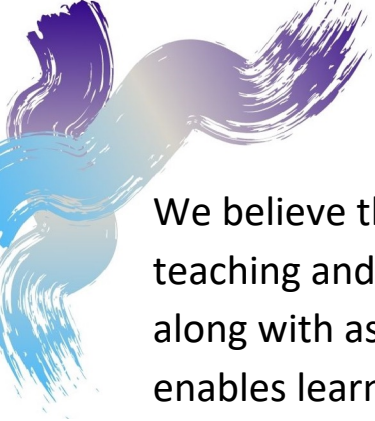
Summer Term – Publication of Curriculum Intent



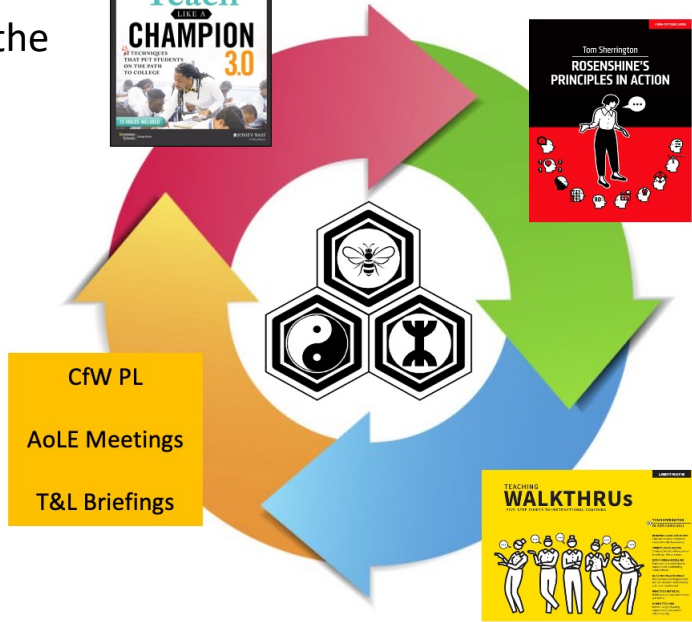
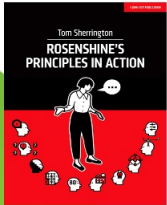
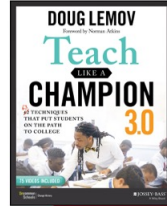


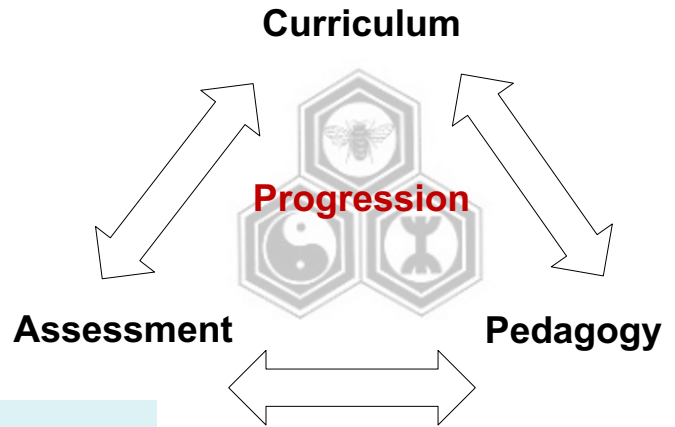
Our curriculum journey towards 2023 has involved:

- Working as a Pioneer School for the Expressive Arts.
- Working with learners to develop our approach to the Curriculum for Wales through our Learner Voice feedback.
- Professional learning and collaboration for staff, working together in AoLEs:
  - to develop a clear understanding of 'what matters', assessment and progression
  - to develop and trial a meaningful curriculum, with engaging, authentic tasks.
- A strong focus on teaching and learning and trialling aspects of the 12 Pedagogical Principles.
- Innovative work with our cluster primaries, to develop a cluster vision and consistent curriculum, which enables learner progress along their own learning pathway and raises their aspirations so that they achieve their full potential.
- Professional learning and updates for our Governing Body, to provide information on our journey since 2016.
- Use of assessments, wellbeing information, National tests and our Key Stage Reviews to help us review the impact of our identified actions, learner progress and to keep parents/carers, learners and staff informed.



We believe that high quality teaching and learning experiences along with assessment that enables learners to move forward in their learning should be at the heart of our curriculum.





## Assessment

You and your teachers assess what you've learned all the time and it's an important part of learning.

It is important to:

- help you see where you're up to in your learning
- help you plan your next learning steps
- spot any extra support you need



to help your teachers to:

- encourage and support you to keep improving and
- see how well the whole class is doing.



Your school will also work with your parents or carers to make sure that you have the help you need to move forward.

