

# Brooklands Bulletin

16th September 2016

One Community

One Primary School

One Localised Plan for Success



Email: [office@brooklandsfarm.milton-keynes.sch.uk](mailto:office@brooklandsfarm.milton-keynes.sch.uk)  
[officecountessway@brooklandsfarm.milton-keynes.sch.uk](mailto:officecountessway@brooklandsfarm.milton-keynes.sch.uk)  
Website: [brooklandsfarm.milton-keynes.sch.uk](http://brooklandsfarm.milton-keynes.sch.uk)

## Term Dates:

2016/2017

Autumn (1) term ends 21st Oct

Half Term Break 24th—28th Oct

Inset Day Monday 31st October

Autumn (2) term begins 1st Nov

Autumn (2) term ends 16th Dec  
(15th December for Nursery)

Christmas break 19th Dec—2nd Jan

Inset Day Tuesday 3rd January

Spring (1) term begins 4th January

Spring (1) term ends 10th February

Half term break 13—17th February

Spring (2) term begins 20th Feb

Spring (2) term ends 31st March  
(30th March for Nursery)

Easter break 3rd April—17th April

Summer (1) term begins 18th April

Bank Holiday Monday 1st May

Summer (1) term ends 26th May

Half term break 29th May—2nd Jun

Summer (2) term begins 5th June

Summer (2) term ends 21st July  
(20th July for Nursery)

Dear Parents/Carers,

We have had a great second week back. We were visited by World at Your Feet Solutions motivational speaker Stuart Myers who gave us all an inspirational speech entitled 5 Hints for Your Future which was a fitting end to our Inspiration and Aspirations project. The children were fascinated by his many abilities and asked lots of great questions about how he did everyday things with having no arms.



Foundation 2 have started their morning sessions this week. Welcome to the Brooklands Farm family! They have settled very well and we are confident that will continue next week when stay that bit longer, through lunchtime and then full days the week after.

Don't forget curriculum teas are next week, we look forward to seeing you all as well as your marvellous Roald Dahl cake and biscuit creations.

Enjoy your weekend.

Don't forget to place your hot dinner orders for week commencing 26th September by Monday .

To report an absence please phone the school office on 01908 760081 (option 1) by 9am.  
Alternatively, you may report an absence via the website:  
<http://brooklandsfarm.milton-keynes.sch.uk/reporting-absence/#>

## Reminders

**Curriculum Tea:** If you have not already booked a session for curriculum tea please do so at: [www.schoolinterviews.co.uk](http://www.schoolinterviews.co.uk) and enter the code **pmbs9** for Fen Street and **q7axm** for Countess Way. Sessions available are:

Wednesday 21st September 2-3pm, 4-5pm, 5-6pm and 6-7pm

Thursday 22nd September 8:30-9:30am

Don't forget to bring your Roald Dahl inspired cakes/biscuits to share as there will be a prize for the most inspiring creation in each small school!

**Bicycles and Scooters:** All bicycles, scooters and skateboards must be dismounted at the school gates.

**PE Kits:** Please send your child in with their PE kit on Mondays so that it is in school all week as PE timetables may change due to weather, etc.

**Healthy Snacks:** Please provide children in Years 3-6 with a healthy snack each day. These should be sent in their book bags as lunch boxes are not kept in their classrooms.

**Personal Items:** Children should not be bringing toys, sports equipment or other items that are precious to them into school with them.

**Lost property:** Please clearly label all uniform, coats, spare clothing, etc. in order to reduce the amount of lost property.

**Medications:** All medications must be signed in at the front desk. Please do not send medications in book bags.

## Dates for Your Diary

**Curriculum Tea:** Countess Way and Fen Street—Wednesday 21st September 2-3pm, 4-5pm, 5-6pm, 6-7pm and Thursday 22nd September 8:30-9:30am

**Parents Evening:** Countess Way and Fen Street—Tuesday 8th November 3:50-5:30pm and Thursday 10th November 3:50-7:30pm. Booking details to follow.

**School Photos:** Countess Way and Fen Street—Thursday 10th November, Individual portraits and siblings

**PTA Christmas Fayre:** Fen Street school hall—Sunday 4th December 1-4pm. To reserve a stall please email: [pta@brooklandsfarm.milton-keynes.sch.uk](mailto:pta@brooklandsfarm.milton-keynes.sch.uk)

## Tell Me Tuesday

Mrs Langford and Mrs Thelwell will be collecting your answers at drop-off on Tuesday at the school gates at Fen Street and Miss McShane at Countess Way. Results are now published on the school website.

Next week's Tell Me Tuesday question is:

On a scale on 1 to 5, I know what 'open, grow, believe' means?

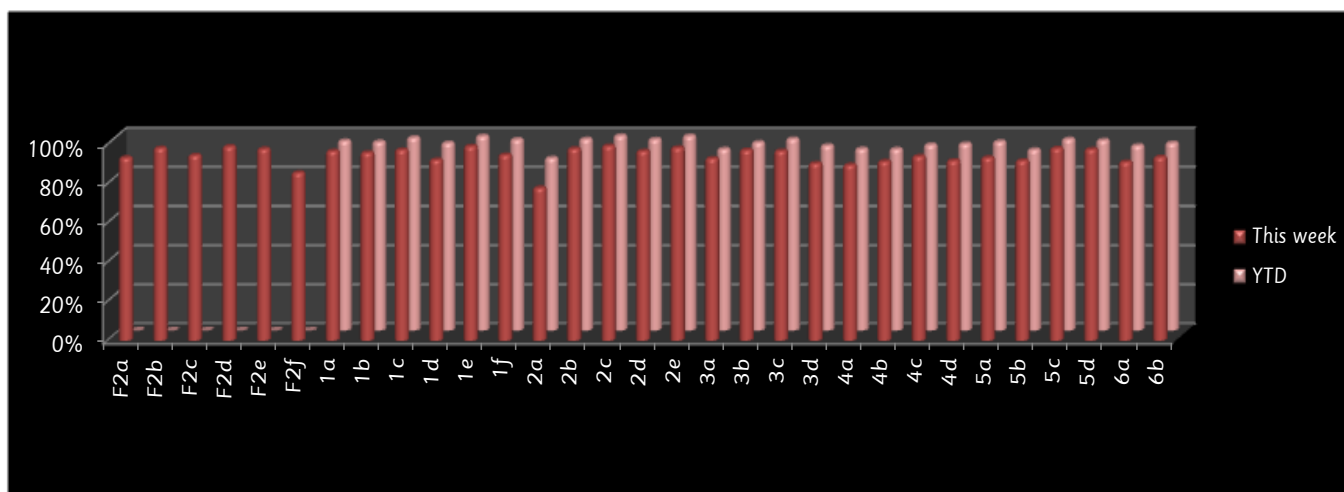
## Pin Assemblies

Children have already started to earn ticks on their new target cards.

Please watch this space for upcoming pin assemblies!

## Attendance

The national expected level of attendance is 96.5%. We take attendance very seriously at Brooklands Farm and expect to achieve this level with your partnership. This week's attendance is:



Due to Eid, the attendance trophy award will begin next week.