

# Brooklands Bulletin



29th April 2016



One Community

One Primary School

One Localised Plan for Success

Email: [office@brooklandsfarm.milton-keynes.sch.uk](mailto:office@brooklandsfarm.milton-keynes.sch.uk)  
[officecountessway@brooklandsfarm.milton-keynes.sch.uk](mailto:officecountessway@brooklandsfarm.milton-keynes.sch.uk)  
Website: [brooklandsfarm.milton-keynes.sch.uk](http://brooklandsfarm.milton-keynes.sch.uk)

## Term Dates:

2015/2016

Bank Holiday Monday 2nd May

Summer (1) term ends 27th May

Half Term Break 30th May—3rd June

Summer (2) term begins 6th June

Summer (2) term ends 21st July  
(20th July for Nursery)

2016/2017

Autumn (1) term begins 5th Sept

Autumn (1) term ends 21st Oct

Half Term Break 24th—28th Oct

Inset Day Monday 31st October

Autumn (2) term begins 1st Nov

Autumn (2) term ends 16th Dec  
(15th December for Nursery)

Christmas break 19th Dec—2nd Jan

Inset Day Tuesday 3rd January

Spring (1) term begins 4th January

Spring (1) term ends 10th February

Half term break 13—17th February

Spring (2) term begins 20th Feb

Spring (2) term ends 31st March  
(30th March for Nursery)

Easter break 3rd April—17th April

Summer (1) term begins 18th April

Bank Holiday Monday 1st May

Dear Parents/Carers,

Year 6 have done amazingly well this week; they've demonstrated strong and powerful attitudes to their learning, resilience and determination. We are very proud of them. This week was our final practise, we are on countdown to 9th May and are continuing to work hard. Keep going Year 6, you are doing ever so well!

Year 2 have also been coping really well in their new groups as we approach May. Your partnership is especially important during this time of time of year, therefore please continue to communicate any concerns you may have.

Remember, if your child is starting school for the first time in September, **you must accept their school place no later than 2nd May 2016**. This includes anyone requesting a campus transfer (it is the school place you are accepting not a campus place). You can accept your child's place by logging into the portal on the local authority's website at [https://emsonline.milton-keynes.gov.uk/ccsenterprise\\_admissionsonline\\_live/default.aspx](https://emsonline.milton-keynes.gov.uk/ccsenterprise_admissionsonline_live/default.aspx).

Monday is bank holiday, we will see back on Tuesday 3rd May. Have a wonderful, long weekend.

The cut-off for ordering school dinners for week commencing 9th May is:

**9am, Thursday 5th May**

To report an absence please phone the school office on 01908 760081 (option 1) by 9am.

Alternatively, you may report an absence via the website:

<http://brooklandsfarm.milton-keynes.sch.uk/reporting-absence/#>

## Latest News

**Fen Street Nursery Gates:** Please be aware that the gates surrounding the Nursery area at Fen Street will no longer be left open as a walk through in the morning and afternoon. This is so that the outdoor learning space the Nursery team has worked hard setting up for the day's learning is not disturbed. The gates will open at 8:30am for drop-off, at 11:30am for morning pick-up and again at 3:30pm for afternoon pick-up. If the gates are closed please do not let yourselves or children through, we will open them for you.

**A Taste of Music for 2016, Junior School Choirs:** The school choir will be taking part in a fund raising event for Willen Hospice at the Holiday Inn in Central Milton Keynes on Friday 20th May. Tickets are available at the front desk, £5 for adults, children under 12 are free. Please arrive at 6pm for 6:30-8:30pm performance.

**Broughton Cycling Group Sportive:** Broughton Cycling Group has become a significant and recognised part of the Broughton & Brooklands community with a lot of its members also being part of the Brooklands Farm family. They will be cycling 50 miles on Sunday 8th May in aid of Willen Hospice. If you would like to either take part in the event or volunteer to marshal the route please email [info@broughtoncyclinggroup.org](mailto:info@broughtoncyclinggroup.org)

**Countess Way Lost Property:** We seem to have a collection of children's eye glasses that have been found. If your child is missing their glasses please come to Reception to claim them.

**Summer Uniform:** Just a reminder that our summer uniform consists of:

red or yellow checked summer dresses  
grey or black trousers/shorts with white polo top  
maroon embroidered jumper/cardigan  
black school shoes (no trainers, football boots or sandals)

As always, please be sure every item of uniform is clearly labelled with your child's name.

## Dates for Your Diary

**Upcoming Sports Festivals:** Year 3 & 4 Tennis – 17th May

Year 5 & 6 Rounders – 12th May, Tennis – 13th May, Cricket – 8th June

**A Taste of Music for 2016, Junior School Choirs:** Friday 20th May, arrival 6pm for 6:30-8:30pm performance. Tickets available at the front desk.

**The Big Lunch:** Sunday 5th June on the playing fields at Broughton Fields Primary School

**Year 6 Residential:** 20th-24th June, New Barn

**Year 5 Residential:** 6th-8th July, The Caldecotte Xperience

## Tell Me Tuesday

Mrs Langford and Mrs Thelwell will be collecting your answers at drop-off on Tuesday at the school gates at Fen Street and Miss McShane at Countess Way. Results are now published on the school website.

Next week's Tell Me Tuesday question is:

On a scale of 1 to 5, how relevant is drug education?

## Pin Assemblies

Pin assemblies will be held in your child's classroom. Parents/Carers are invited to attend, please sign in at Reception and then accompany your child to their classroom. If you cannot make the date below, please make arrangements with your child's class for another day.

Those children who have achieved their pin for assembly week commencing 3rd May are:

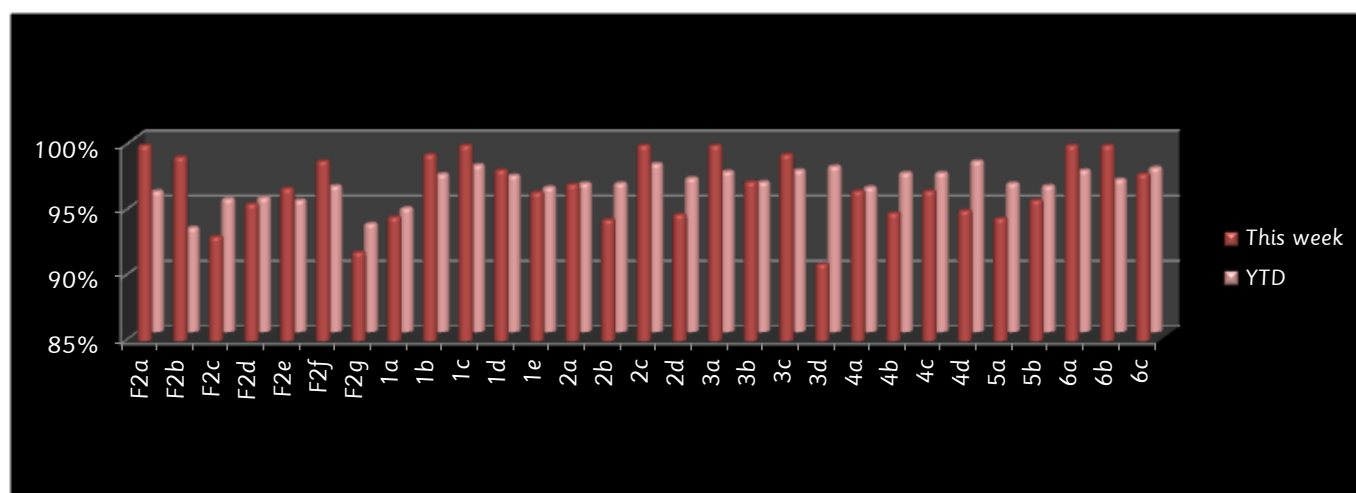
**Wednesday 4th May: Foundation 2: (Pink Pin)** Faith, Michele, Siobhan, Amelia W, Lilly T, Zaccai

**Thursday 5th May: Year 3: (Pink Pin)** Dylan J **(Green Pin)** Milo, Tia, Iggy, Tyra **Year 4: (Yellow Pin)** Kiera, Jaiden, Ruby **(Yellow Ribbon)** Loveleen

**Friday 6th May: Year 1: (Orange Ribbon)** Amelia, Noah B, Mia, Kayla, Varsha, Maddie, Catherine **Year 2: (Blue Pin)** Ryan C, Shyam, Lily **(Blue Ribbon)** Aya, Elouise, Tristan, Ahad, Elsie

## Attendance

The national expected level of attendance is 96.5%. We take attendance very seriously at Brooklands Farm and expect to achieve this level with your partnership. This week's attendance is:



The winners of the attendance trophy this week at Countess Way are F2f and at Fen Street F2a, 1c, 2c, 3a, 6a and 6b all with 100% attendance! Congratulations!!!