

Brooklands Bulletin



25th November 2016

One Community

One Primary School

One Localised Plan for Success



Email: office@brooklandsfarm.milton-keynes.sch.uk
officecountessway@brooklandsfarm.milton-keynes.sch.uk
Website: brooklandsfarm.milton-keynes.sch.uk

Term Dates:

2016/2017

Autumn (2) term ends 16th Dec
(15th December for Nursery)

Christmas break 19th Dec—2nd Jan

Inset Day Tuesday 3rd January

Spring (1) term begins 4th January

Spring (1) term ends 10th February

Half term break 13—17th February

Spring (2) term begins 20th Feb

Spring (2) term ends 31st March
(30th March for Nursery)

Easter break 3rd April—17th April

Summer (1) term begins 18th April

Bank Holiday Monday 1st May

Summer (1) term ends 26th May

Half term break 29th May—2nd Jun

Summer (2) term begins 5th June

Summer (2) term ends 21st July
(20th July for Nursery)

2017/2018

Autumn (1) term begins 4th Sept

Autumn (1) term ends 20 October

Half Term Break 23rd—27th Oct

Inset Day Monday 30th October

Autumn (2) term begins 31st Oct

Autumn (2) term ends 15th Dec
(14th Dec for Nursery)

Dear Parents/Carers,

Thank you very much for your support for our Children in Need fundraising effort last Friday, together we raised an amazing £1,153!

And...

The Taste of Music for 2016 event in which our choir performed last week raised a total of £1,594 for Willen Hospice!

The Foundation Team would like to invite children to wear winter/festive head gear (i.e. hats, headbands) for their Songs Around the Tree performance during Tree Week.

If you haven't already done so, please remember to book your space for your child's Tree Week performance, details can be found on the next page. The PTA will be selling teas and coffees before each morning performance between 8:45 -9:15am at both Countess Way and Fen Street.

Just a reminder that next Friday 2nd December is a non-uniform day organised by the PTA. Children may come dressed in non-uniform in exchange for a donation for the Milton Keynes Food Bank (Foundation Stage—Year 2) or a box of chocolate/sweets (Years 3-6) for the tombola at the PTA Christmas Fayre which takes place in our Fen Street school hall on Sunday 4th December from 1-4pm. Although it is a non-uniform day, any children who have PE that day must still wear their full PE kit for their lesson. Please also keep in mind that we are outside on the playground for nearly an hour over lunchtime. Last non-uniform day we saw lots of children without coats, wearing only hoodies. Shoes with heels are also not appropriate for health and safety during playtime.

Enjoy your weekend.

Don't forget to place your hot dinner orders for week commencing 5th December by Monday .

To report an absence please phone the school office on 01908 760081 (option 1) by 9am.
Alternatively, you may report an absence via the website:
<http://brooklandsfarm.milton-keynes.sch.uk/reporting-absence/#>

Reminders

School Photographs: The deadline to return school photograph orders is Wednesday 30th November.

Tree Week Performances: Please remember to book your place in order for us to plan for numbers attending.

Foundation 1 & 2 Songs Around the Christmas Tree:

Fen Street—Monday 12th December at 9:15am and 2:30pm

Countess Way—Tuesday 13th December at 9:15am and 2:30pm

'For Every Child' Performances:

Fen Street, Years 1 and 2—Tuesday 13th December at 9:15am and 2:30pm

Countess Way, Years 1-5—Wednesday 14th December at 9:15am and 2:30pm

Fen Street, Years 3 and 4—Wednesday 14th December at 9:15am and 2:30pm

Fen Street, Years 5 and 6—Thursday 15th December at 9:15am and 2:30pm

To book your place at a performance please visit www.schoolinterviews.co.uk and enter code:

hvs3c for Countess Way performances

cmrtw for Fen Street performances

Winter Wreath Making Workshops: This is a fundraising effort organised by the PTA. Parents/Carers are invited in to make winter wreaths with their child. The cost of this workshop is £10 (payable in cash on the day), all materials provided.

Monday 5th December at 9:15am and 2:30pm

Tuesday 6th December at 9:15am and 2:30pm

Wednesday 7th December at 9:15am and 2:30pm

To book your place please visit www.schoolinterviews.co.uk and enter code **d2xsw**

Lantern Making Workshops: Parents/Carers are invited in to make lanterns with their child. There is a £1 charge for the light placed inside lantern.

Monday 5th December at 9:15am and 2:30pm

Tuesday 6th December at 9:15am and 2:30pm

Wednesday 7th December at 9:15am and 2:30pm

To book your place please visit www.schoolinterviews.co.uk and enter code **d2xsw**

Foundation Decoration Making Sessions: Parents/Carers are invited in to make festive decorations with their children. Sessions will take place in Foundation, run by the Foundation Team.

Countess Way Monday 5th December at 9:15am and 2:30pm

Tuesday 6th December at 9:15am and 2:30pm

Fen Street Wednesday 7th December at 9:15am and 2:30pm

Thursday 8th December at 9:15am and 2:30pm

To book your place please visit www.schoolinterviews.co.uk and enter code **s2ffz**

Dates for Your Diary

Year 5 Residential Parent Information Evening: Tuesday 29th November, 5pm at Fen Street

PTA Non-uniform Day: Whole school—Friday 2nd December. Children may come dressed in non-uniform in exchange for a donation for the Milton Keynes Food Bank (Foundation Stage—Year 2) or a box of chocolate/sweets for the tombola at the PTA Christmas Fayre (Years 3-6).

PTA Christmas Fayre: Fen Street school hall—Sunday 4th December 1-4pm.

Lantern and Winter Wreath Making Sessions: Countess Way and Fen Street—Monday 5th December, Tuesday 6th December and Wednesday 7th December. More details to follow.

Community Carol Service: Brooklands Pavilion—Friday 9th December 6:30pm, school choir will be performing.

Foundation Songs Around the Christmas Tree: Countess Way—Tuesday 13th December at 9:15am and 2:30pm. Fen Street—Monday 12th December at 9:15am and 2:30pm.

'For Every Child' Performance: Countess Way (whole school)—Wednesday 14th December at 9:15am and 2:30pm. Fen Street Key Stage 1—Tuesday 13th December at 9:15am and 2:30pm, Fen Street Lower Key Stage 2—Wednesday 14th December at 9:15am and 2:30pm, Fen Street Upper Key Stage 2—Thursday 15th December at 9:15am and 2:30pm.

Save the Children Christmas Jumper Day: Whole school—Friday 16th December. Children may come to school in their Christmas jumpers (non-uniform for those not celebrating Christmas) for a suggested donation of £1.

Tell Me Tuesday

We have now made our Tell Me Tuesday question available to answer on our website from 9am– 6pm every Tuesday. It can be found under Parents > Tell Me Tuesday.

Next week's Tell Me Tuesday question is:

On a scale on 1 to 5, is it important to you to attend your child's pin assembly?

Pin Assemblies

Pin assemblies will be held in your child's classroom. Parents/Carers are invited to attend, please drop off your child as normal and then make your way to Reception to sign in where your child will come to greet you. **If you cannot make the day below, please make arrangements with your child's class for another day.**

Those children who have achieved their pin/ribbon are:

Monday Pin Assembly: Foundation 2: (Gold Pin)

Thursday Pin Assembly: Year 3: (Gold Pin) Valentina **(Green Pin)** Theo, Ellouise

Year 4: (Gold Pin) Sarayu, Arshbir, Jamie-Lee, Amelia **(Yellow Pin)**

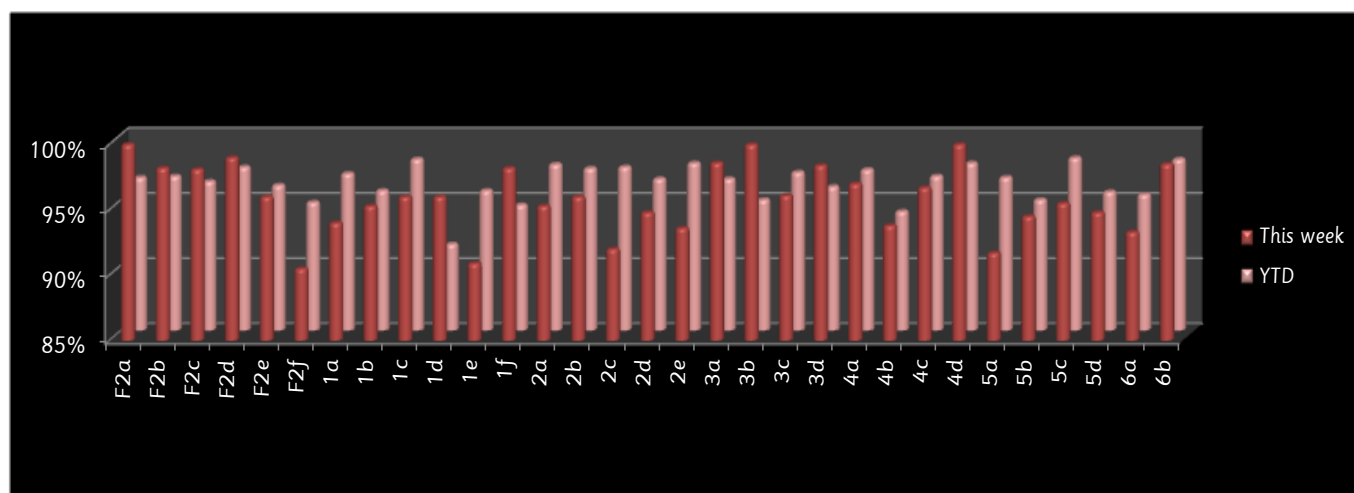
Year 5: (Purple Pin) Antosia, Thara, Lolah, Richelle **(Purple Ribbon)** Muhammad, Michael, Kayne

Friday Pin Assembly: Year 1: (Gold Pin) Ariyan, Harry, David O **(Orange Pin)** Anya, Aimee, Sofia, Al-Hassan, Sophie, Freya

Year 2: (Gold Pin) Kiril **(Blue Pin)** Imogen B

Attendance

The national expected level of attendance is 96.5%. We take attendance very seriously at Brooklands Farm and expect to achieve this level with your partnership. This week's attendance is:



This week's winners of the attendance trophy are F2a Miss Ormshaw's class, 3b Miss Russell's class, 3d Mr Gray's class and 4d Mr Kerin's class. Congratulations!