

Brooklands Bulletin

20th January 2017



One Community

One Primary School

One Localised Plan for Success



Email: office@brooklandsfarm.milton-keynes.sch.uk
officecountessway@brooklandsfarm.milton-keynes.sch.uk
Website: brooklandsfarm.milton-keynes.sch.uk

Term Dates:

2016/2017

Spring (1) term ends 10th February

Half term break 13—17th February

Spring (2) term begins 20th Feb

Spring (2) term ends 31st March
(30th March for Nursery)

Easter break 3rd April—17th April

Summer (1) term begins 18th April

Bank Holiday Monday 1st May

Summer (1) term ends 26th May

Half term break 29th May—2nd Jun

Summer (2) term begins 5th June

Summer (2) term ends 21st July
(20th July for Nursery)

2017/2018

Autumn (1) term begins 4th Sept

Autumn (1) term ends 20th October

Half Term Break 23rd—27th Oct

Inset Day Monday 30th October

Autumn (2) term begins 31st Oct

Autumn (2) term ends 15th Dec
(14th Dec for Nursery)

Christmas Break 18th Dec—1st Jan

Inset Day Monday 2nd January

Spring (1) term begins 3rd January

Spring (1) term ends 9th February

Dear Parents/Carers,

I have been asked by some members of the community to highlight the unacceptable adult behaviour that is occurring during drop off and pick up. A few parents are choosing to:

- Park in or across disabled spaces stopping those who need this provision from accessing it.
- Be abusive because they are late or don't get the parking space they require.
- Park outside the front door rather than park in spaces, causing danger to all.
- Shout, blare their horn and get abusive to anyone who gets in their way, including children.

On behalf of the community I would like to ask those who are choosing these unacceptable behaviours to stop. You are not only putting our community in danger but you are teaching your children to behave in the same manner. Life is never so busy that we need to put others' lives at risk or treat each other with disrespect. Our school and community will continue to grow, we therefore all need to work together to ensure the safety of our children. I would urge as many families as possible to walk to school to ease some of the pressure of the car parks.

Please keep in mind that if you want to continue to be invited onto our school site you must follow the social rules that allow us to all be safe.

We have met with Thames Valley Police this week who will be working in partnership with us to monitor the situation.

Maxine Low
Executive Head Teacher

Don't forget to place your hot dinner orders for week commencing 30th January.

To report an absence please phone the school office on 01908 760081 (option 1) by 9am.
Alternatively, you may report an absence via the website:
<http://brooklandsfarm.milton-keynes.sch.uk/reporting-absence/#>

Latest News

Free School Meals/Pupil Premium: You may have received an information sheet regarding Free School Meals/Pupil Premium last week. This may be because either your child's name no longer appears on the local authority list. Please visit the Citizens Portal on the Milton Keynes Council website www.milton-keynes.gov.uk > Schools and Lifelong Learning > Information for Parents > Free School Meals to reapply using their new process which is quick and simple to use and can be accessed via a smartphone or hand held device. If your child is in Foundation, Year 1 or Year 2 please apply even though they qualify for the Universal Free School Meals as it will draw more money to our school.

School Uniform: Boots and trainers are not acceptable school shoes. Please refer to our uniform policy on the website, all children should be coming to school in black school shoes.

Also, children should be bringing in book bags and PE kit bags only, we do not have the space for any other type of bag such as bulky rucksacks. Pencil cases are not allowed either, all stationary is provided. Personal items such as pencil cases cause distraction and sometimes disagreements between children.

Morning Snack: Just a reminder that Key Stage 2 children (years 3-6) should be bringing in a healthy snack each day such as fruit. We have a number of children asking for fruit which is provided for younger children, leaving us short.



Community Café: A new community group got off to a yummy start on Monday! Come and join them, Community Café runs every Monday from 9.30-11.00 at Fen Street.

School Library Books: Please have a look over the weekend for any books that are belonging to school. We have a number of books missing from our libraries.

MK Special Educational Needs and Disability Information Day: SEND IAS and Parents and Carers Alliance MK will be hosting an information day on Saturday 4th February from 9:15 am—3:30pm at The Ridgeway Centre, Featherstone Road, Wolverton MK12 5TH. For more information phone 01908 254518 or visit www.milton-keynes.gov.uk/mksendias

Visit My Mosque Open Day: The KSI Muslim Community of Milton Keynes will be hosting an open day on Sunday 5th February from 1:15pm at KSI Milton Keynes, Peverel Drive, Bletchley, Milton Keynes MK1 1NG. For more details please visit www.visitmymosquemk.eventbrite.com

Dates for Your Diary

World Book Day: Whole school—Thursday 2nd March, children may come to school dressed as their favourite book character. This year we are asking for a suggested donation of £1 to go towards the purchase of new books.

Parents Evening: Tuesday 7th March and Thursday 9th March, booking information available soon.

Tell Me Tuesday

We have now made our Tell Me Tuesday question available to answer on our website until 6pm every Tuesday. It can be found under Parents > Tell Me Tuesday.

Next week's Tell Me Tuesday question is:

On a scale on 1 to 5, do you feel your child's learning is personalised?

Pin Assemblies

Pin assemblies will be held in your child's classroom. Parents/Carers are invited to attend, please drop off your child as normal and then make your way to Reception to sign in where your child will come to greet you. **If you cannot make the day below, please make arrangements with your child's class for another day.**

Those children who have achieved their pin/ribbon are:

Monday Pin Assembly: Foundation 2: (Gold Pin) Ronni, Isabella N, Oliver (F2a), Imogen, Enea, David, Mason, Israel, Adam, Isabella S, Alex M, Summer

Thursday Pin Assembly: Year 2: (Gold Pin) Anwsha **(Blue Pin)** Jack M, Alex, Danielle, Amelia L **(Blue Ribbon)** George

Year 3: (Green Pin) Agnes, Simran, Zion, Sandra, Dakota, Kendra, Wojtus, Lucy, Charapreet, Reeka, Sadie, Rios, Jake, Austeja, Tyson, Mathys, Ellie, Elsie

Year 4: (Yellow Pin) Reece, Janelle, Hope, Oskar, Ali-Hassan, Archie, Azzam

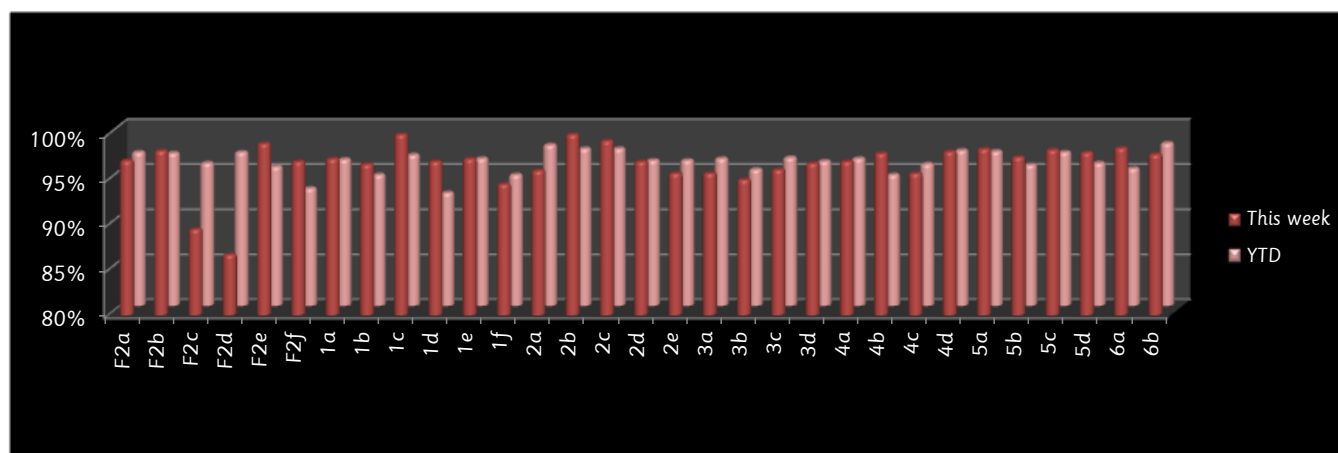
Year 5: (Purple Pin) Naveen, Yunus **(Purple Ribbon)** James, Bradley, Sahar

Year 6: (Red Pin) Tiya, Kailash, Fatuma, Sienna, Leo, Aiman

Friday Pin Assembly: Year 1: (Orange Pin) Ashirai, Leo, Veer

Attendance

The national expected level of attendance is 96.5%. We take attendance very seriously at Brooklands Farm and expect to achieve this level with your partnership. This week's attendance is:



This week's winners of the attendance trophy are F2e Miss Jasper's class, 1c Miss Draper's class, 2b Miss Hearn's class, 4d Mr Kerin's class and 5d Miss Snowdon's class. Congratulations!