

Brooklands Bulletin



8th January 2016



One Community

One Primary School

One Localised Plan for Success

Email: office@brooklandsfarm.milton-keynes.sch.uk

Website: brooklandsfarm.milton-keynes.sch.uk

Term Dates:

2015/2016

Spring (1) term ends 12th February

Half Term Break 15th-19th February

Spring (2) begins 22nd February

Spring (2) ends 24th March (23rd March for Nursery)

Easter Break 25th March-8th April

Inset Day Monday 11th April

Summer (1) term begins 12th April

Bank Holiday Monday 2nd May

Summer (1) term ends 27th May

Half Term Break 30th May—3rd June

Summer (2) term begins 6th June

Summer (2) term ends 21st July (20th July for Nursery)

2016/2017

Autumn (1) term begins 5th Sept

Autumn (1) term ends 21st Oct

Half Term Break 24th—28th Oct

Inset Day Monday 31st October

Autumn (2) term begins 1st Nov

Autumn (2) term ends 16th Dec (15th December for Nursery)

Christmas Break 19th Dec—2nd Jan

Inset Day Tuesday 3rd January

Dear Parents/Carers,

Happy New Year. What a first week back! We had an interesting start to our week with a fault on our telephone line and the pedestrian crossing not working on Newport Road. Please help us by reporting any future issues with that crossing by phoning the council's out of hours line on 01908 226699 as they do treat that crossing as an emergency repair. We resolved those issues and persevered, having a pretty exciting week igniting our learning; including a visit from The English school of Falconry, a space dome set up in our Fen Street school hall as well as an in-house superhero workshop. And to top off such an eventful week we welcomed back Miss Low!!!

With the new year, comes the colder weather. We've had lots of children with cold hands on the playground this week and forecasters are saying Winter arrives next week. Please be sure to clearly name hats and gloves to send in with children next week.

For our Key Stage 2 parents, Sex and Relationships Education sessions will be taught next week. Year 3 and Year 4's SRE sessions will both take place on Friday 15th January, Year 5 on Tuesday 12th January and Year 6 on Thursday 14th January. Please remember that this is an important part of the curriculum and will be taught in a safe and secure environment to ensure all children feel at ease with the content of the sessions. In Years 5 and 6, the children will be split into male and female groups. We recommend that all children are present for these sessions but, as you know, parents have a legal right to withdraw their children from SRE. Please return the letter or inform your child's class teacher if you wish to withdraw your child from any of the sessions.

Enjoy your weekend.

The cut-off for ordering school dinners for week commencing 18th January is:

2pm, Monday 11th January

To report an absence please phone the school office on 01908 760081 (option 1) by 9am. Alternatively, you may report an absence via the website:

<http://brooklandsfarm.milton-keynes.sch.uk/reporting-absence/#>

Care Club contact numbers (available during the hours of 4-6pm): Fen Street—07756 564509, Countess Way—07902 112973

Latest News

Starting School for the First Time: For children born between 1st September 2011 and 31st August 2012, starting school for the first time (Reception year) in September 2016, national closing date for applications is **Friday 15th January 2016**. National Offer Day is 18th April 2016.

Year 5 and Year 6 Residential: We are pleased to say that we will be going ahead with both the Year 5 and Year 6 residential as planned. Some spaces have become available for both trips, therefore if your child is interested in attending the residential, please let us know as soon as possible so that we can make arrangements for your deposit to secure a space.

Bicycles/Scooters: All bicycles and scooters should be dismantled at the school gates. They should not be ridden across the playground and most certainly should not be ridden through the cross corridor.

Nursery Stay and Play: Just a reminder that next week is Stay and Play week. Please join us come on the slot/day you have signed up for. If you have not yet signed up please see a member of staff in Nursery at the beginning of next week to organise a session time.

Year 1 Ignite Trip: Year 1 are going on their Ignite Trip to The Shuttleworth Collection next week. It is Monday for Countess Way and Tuesday and Wednesday for Fen Street- on their trip day they will need to be at school promptly at 8.15am. Please can all children come to school with their coats, gloves, hats and scarfs and with their lunch in a disposable plastic bag.

Open Coffee Morning: Please join us for an open coffee morning on Thursday, every fortnight from 8:30-10:00 at Countess Way, starting 21st January.

Breakfast Club/Care Club/Activity Clubs Queries: Please direct your queries regarding breakfast club, care club and activity clubs to careclub@brooklandsfarm.milton-keynes.sch.uk

Lost Property: We have been accumulating lots of unnamed lost property again including some lovely winter coats. Please check the lost property trolley for any items your child may be missing by the end of next week. Any unnamed items not claimed after next week will be donated to charity.

Buggies and Pushchairs: Just a reminder that as we have had new carpet laid on both campuses over Summer, please take care not to push buggies and pushchairs across any carpeted area of the school.

Dates for Your Diary

Upcoming Sports Festivals: 14th Jan—Year 3 & 4 Badminton @ Walton High, 20th Jan—5 & 6 Indoor Athletics @ Ousedale, 27th Jan— Year 5 & 6 Football @ Tattenhoe

GOSH we love a bake sale!: Thursday 28th January, after school... more details to follow.

Parents Evening: Tuesday 8th March, 3:50-5:30pm and Thursday 10th March, 3:50-7:30pm. You will receive an event code to book online via ParentMail.

Year 6 Residential: 20th-24th June, New Barn

Year 5 Residential: 6th-8th July, The Caldecotte Xperience

Tell Me Tuesday

Mrs Langford and Mrs Thelwell will be collecting your answers at drop-off on Tuesday at the school gates at Fen Street and Miss McShane at Countess Way.

Next week's Tell Me Tuesday question is:

On a scale of 1 to 5, do you feel the community respects you and your beliefs?

Pin Assemblies

Pin assemblies will be held in your child's classroom. Parents/Carers are invited to attend, please sign in at Reception and then accompany your child to their classroom. If you cannot make the date below, please make arrangements with your child's class for another day.

Those children who have achieved their pin for assembly week commencing 11th January are:

Monday 11th January: Foundation 2: (Gold Pin) Siobhan M, Julia W, David L, Tanvi M, Timothy V N, Isabella D, Oliver S

Thursday 14th January: Year 3: (Gold Pin) Hansika **(Green Pin)** Mathias S

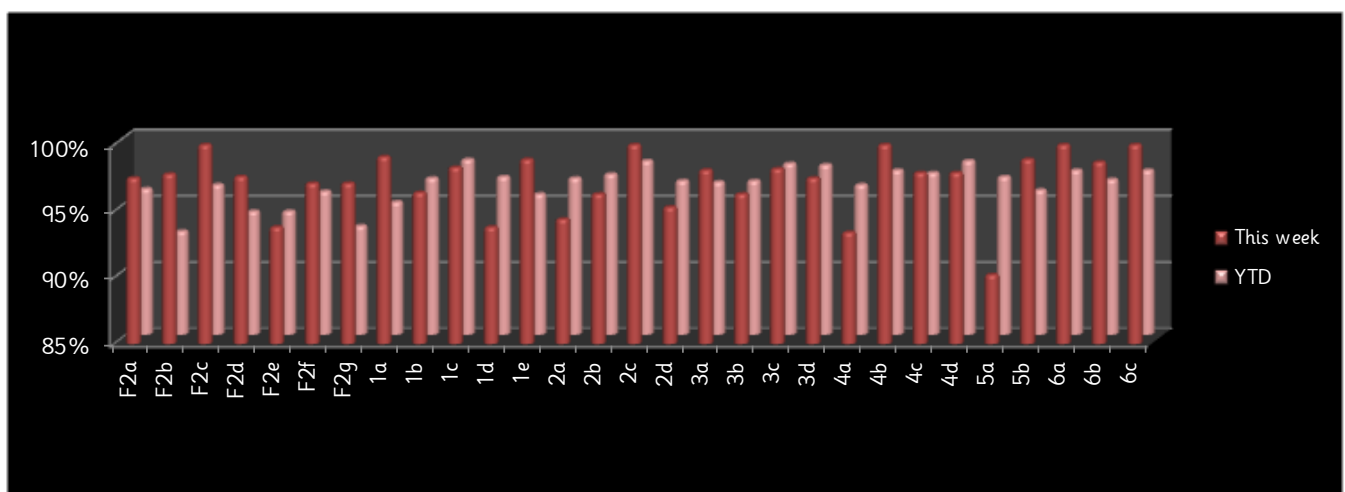
Year 4: (Yellow Pin) Lily M, Krish P

Friday 15th January: Year 1: (Orange Pin) Peyton O, Heshal R, Taylor D, Louie H

Year 2: (Gold Pin) David O, Ishal Y **(Blue Pin)** Rory S, Austeja P, Martyna S, Asia N

Attendance

The national expected level of attendance is 96.5%. We take attendance very seriously at Brooklands Farm and expect to achieve this level with your partnership. This week's attendance is:



Overall, as a school for this week we are at 97.4%!! Which means that many classes have achieved 100% attendance this week. Four in total, F2c, 4b, 6a and 6c!

A huge congratulations to 1e who have achieved the trophy this week with an attendance of 98.5%.