

# Brooklands Bulletin



4th November 2016

One Community

One Primary School

One Localised Plan for Success



Email: [office@brooklandsfarm.milton-keynes.sch.uk](mailto:office@brooklandsfarm.milton-keynes.sch.uk)  
[officecountessway@brooklandsfarm.milton-keynes.sch.uk](mailto:officecountessway@brooklandsfarm.milton-keynes.sch.uk)  
Website: [brooklandsfarm.milton-keynes.sch.uk](http://brooklandsfarm.milton-keynes.sch.uk)

## Term Dates:

2016/2017

Autumn (2) term ends 16th Dec  
(15th December for Nursery)

Christmas break 19th Dec—2nd Jan

Inset Day Tuesday 3rd January

Spring (1) term begins 4th January

Spring (1) term ends 10th February

Half term break 13—17th February

Spring (2) term begins 20th Feb

Spring (2) term ends 31st March  
(30th March for Nursery)

Easter break 3rd April—17th April

Summer (1) term begins 18th April

Bank Holiday Monday 1st May

Summer (1) term ends 26th May

Half term break 29th May—2nd Jun

Summer (2) term begins 5th June

Summer (2) term ends 21st July  
(20th July for Nursery)

2017/2018

Autumn (1) term begins 4th Sept

Dear Parents/Carers,

Just a reminder that parents evening will take place next week on Tuesday 8th November and Thursday 10th November. There are still a number of parents that have not booked a time slot with their child's teacher. If you have not already done so, visit [www.schoolinterviews.co.uk](http://www.schoolinterviews.co.uk) to book your slot.

Enter the code **w74tz** for Countess Way

Enter the code **dqayz** for Fen Street

As always, if you have any difficulty booking a slot please see the front desk.

Children will have brought home an A4 sheet of paper and order form this week to take part in the PTA's greeting card fundraiser. All designs must be returned to the front office no later than 11th November. Whether you celebrate Christmas or not this is a great way to raise funds for our school. Children may design their greeting card any way they choose. Please remember designs should not be placed within 5mm of the edge of the paper and to keep design flat and damage free as marks will show on the final print. Happy designing!

Enjoy your weekend.

Don't forget to place your hot dinner orders for week commencing 14th November by Monday .

To report an absence please phone the school office on 01908 760081 (option 1) by 9am.  
Alternatively, you may report an absence via the website:  
<http://brooklandsfarm.milton-keynes.sch.uk/reporting-absence/#>

## Reminders

**School Portraits:** The School Photography Company will be in at both Countess Way and Fen Street on Thursday 10th November. Please ensure children are dressed in full winter uniform.

**\*IMPORTANT INFO FOR FEN STREET ONLY**—Any pupils with out of school siblings who you would like to be photographed together should be brought to reception at 8 am. Year 6 are out on a trip on this day so could we please ask that Year 6 pupils are brought to school for 8 am, together with any siblings (**both in school and out of school**) who need to have their photos taken with them. Nursery PM parents please come to reception with any out of school siblings after dropping off your child at nursery – we will then go and collect your child from nursery to be photographed with their sibling. All other children will have their photo taken in school time.

**Countess Way and Fen Street Car Parks:** Please do not park your car in the drop off areas of the carparks. By doing this you are preventing other parents from using this space as it was intended to be used—as a 'kiss and drop'. There are plenty of spaces available in the Countess Way carpark, do not leave your car unattended in the drop off only area. Unfortunately, our Fen Street carpark is much busier therefore you may have to circle more than once to wait for a space to become available. Also, there is never an excuse to park in a disabled bay if you are not a blue badge holder. If you are a blue badge holder please remember to display it each time.

**Emailing School:** Please use the office emails to communicate with any member of staff at school. Do not use individual teacher email addresses, the office staff are happy to forward your emails on.

Fen Street email: [office@brooklandsfarm.milton-keynes.sch.uk](mailto:office@brooklandsfarm.milton-keynes.sch.uk)

Countess Way email: [officecountessway@brooklandsfarm.milton-keynes.sch.uk](mailto:officecountessway@brooklandsfarm.milton-keynes.sch.uk)

**Coats:** We've noticed quite a few children coming to school this week without coats. May we please remind you that children are outside nearly 1 hour over lunchtime and it is getting too cold to be outside without a coat, especially for the little ones.

**Winter PE Kits:** All children in Years 1-6 should be bringing in their winter PE kit every Monday as some PE lessons are held outdoors. This consists of jogging bottoms and hooded jumper.

**Foundation 2 PE:** Foundation 2 children will need to start bringing in their PE kits from Monday 7th November ready to do PE this half term.

## Dates for Your Diary

**Parents Evening:** Countess Way and Fen Street—Tuesday 8th November 3:50-5:30pm and Thursday 10th November 3:50-7:30pm.

**School Photos:** Countess Way and Fen Street—Thursday 10th November, Individual portraits and siblings

**PTA Meeting:** Broughton Pavilion—Monday 14th November 7pm

**Save the Children Non-uniform Day:** Whole school—Friday 18th November

**PTA Non-uniform Day:** Whole school—Friday 2nd December. Children may come dressed in non-uniform in exchange for a donation for the Milton Keynes Food Bank (Foundation Stage—Year 2) or a box of chocolate/sweets for the tombola at the PTA Christmas Fayre (Years 3-6).

**PTA Christmas Fayre:** Fen Street school hall—Sunday 4th December 1-4pm.

**Community Carol Service:** Brooklands Pavilion—Friday 9th December 6:30pm, school choir will be performing.

## Tell Me Tuesday

Mrs Langford and Mrs Thelwell will be collecting your answers at drop-off on Tuesday at the school gates at Fen Street and Miss McShane at Countess Way. Results are now published on the school website.

Next week's Tell Me Tuesday question is:

On a scale on 1 to 5, how safe does your child feel at school?

## Pin Assemblies

Pin assemblies will be held in your child's classroom. Parents/Carers are invited to attend, please drop off your child as normal and then make your way to Reception to sign in where your child will come to greet you. **If you cannot make the day below, please make arrangements with your child's class for another day.**

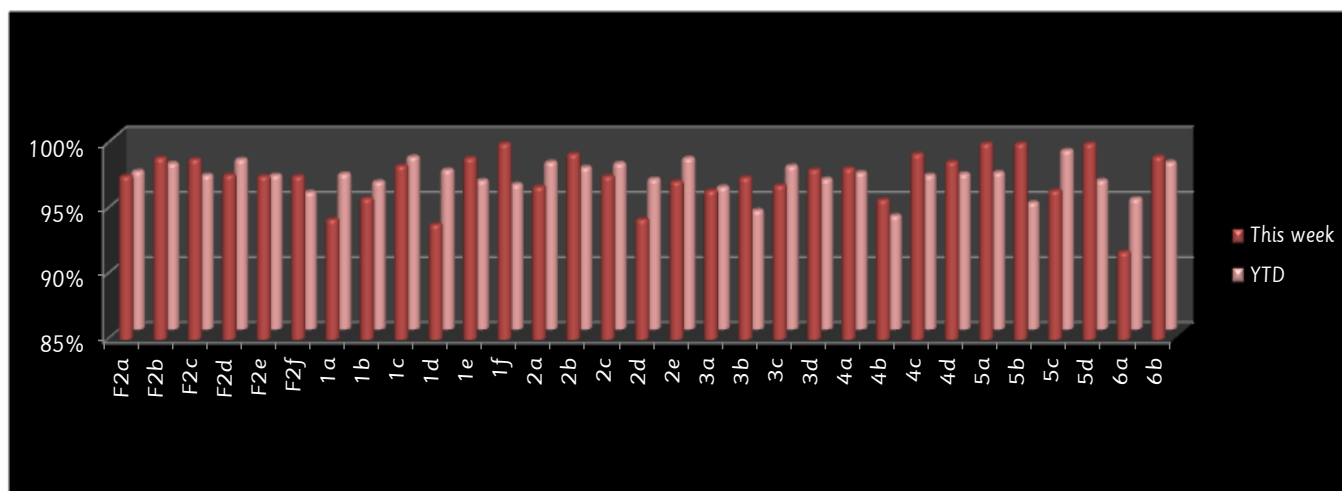
Those children who have achieved their pin are:

**Thursday Pin Assembly: Year 3: (Gold Pin)** Mason W, Tilly J, Neda, Mykah, Maxine **(Green Pin)** Elysee **Year 5: (Gold Pin)** Vicente, Richelle, James **(Purple Pin)** Racheal, Muhammed S, Stephanie, Michael, Kayne

**Friday Pin Assembly: Year 1: (Orange Pin)** Maher **Year 2: (Gold Pin)** Elyssa, Ezra, Julie Ann **(Blue Pin)** Sophie M, George, Sharanya

## Attendance

The national expected level of attendance is 96.5%. We take attendance very seriously at Brooklands Farm and expect to achieve this level with your partnership. This week's attendance is:



This week the winners of the attendance trophy are 1f Mrs Jenkins' class, 5a Mr Stott's class, 5b Mrs Forbes' class, 5d Miss Snowdon's class and 6b Miss Sheridan's class, all with 100% attendance. Congratulations!