

# The Winstanley School

Widening Horizons | Enabling Excellence



**Year 8**

**Option Pathways**

**2021**

# Contents

GCSE Curriculum .....	3
The Core Curriculum .....	4
Option Pathways .....	4
Important Dates .....	4
Option Pathways .....	5
Core Curriculum Subjects These are the subjects that you have to study .....	6
English Language .....	7
English Literature.....	7
Mathematics .....	8
Separate Sciences (3 GCSEs) .....	8
Core PE .....	9
GCSE Religious Studies.....	9
SHINE.....	9
Additional Option Choices These are the subjects that you can choose to study .....	10
Art and Design .....	11
Business.....	11
Computer Science.....	12
Design and Technology (Resistant Materials).....	12
Drama.....	13
GCSE Film Studies .....	14
Geography.....	15
History.....	15
Hospitality and Catering Level1/Level2 Award .....	16
ICT .....	16
Media Studies .....	17
Modern Foreign Language .....	18
Music.....	19
GCSE Physical Education/Sports Studies .....	20
What happens next?.....	24

## **Please note:**

**The details in this booklet were correct at the time of printing. However, it should not be assumed that there will be no changes affecting the relevant information supplied.**

# GCSE Curriculum

Our curriculum is designed to maximise opportunities for success at subjects that students are interested in and may find useful. We offer the core subjects needed to progress at 16 as well as a range of subject choices to meet the needs of each individual. Each student will be allocated a pathway based on their prior attainment at KS2 and their progress over year 7 and during year 8. These pathways will help to ensure that students have appropriate choices for their GCSE subjects.

It is important that choices are based on your strengths and interests, not what your friends are doing or which teacher you would prefer to be taught by.

You and your parents will be invited to individual interviews with a senior member of staff to help you make choices which are right for you.

It is important that you take advice from a range of people:

- Your parents or carers;
- Your subject teachers;
- Your form tutor;
- Senior members of staff.

Questions you may ask them and yourself should include:

- Should I choose subjects I like?
- Which courses may be especially useful to me?
- Are some subjects more useful than others?
- Which courses do my teachers recommend me to take?
- Have I found out as much as I can about subjects I have not studied before but which look interesting?
- Is there something I definitely want to do when I leave school? Have I chosen the most appropriate subjects?
- Have I thought about a wide range of subjects?

This booklet contains information about the core curriculum subjects and the option choices available.

## The Core Curriculum

This is the part you do not choose. All students have to study the following courses at KS4: maths, English, science, Religious Studies, PE and SHINE. Details about these courses can be found on pages 5-7.

Core Subjects	Exam	Taught hours per fortnight
English Language	GCSE	8
English Literature	GCSE	Taught within core English
Maths	GCSE	8
Separate Science	GCSE	10
Religious Studies	GCSE	2
Core PE	No qualification	2
SHINE	No qualification	1

### Option Pathways

You will be able to choose from up to 4 subjects to study. All students will be required to take at least one of the government's English Baccalaureate subjects. Many students will be guided towards taking more than one of these subjects. The English Baccalaureate subjects are MFL, history, geography and the sciences. Many A Level colleges and universities expect students to have studied the full baccalaureate; a language, one of the humanities and the sciences.

The Options Pathways are designed to help you make your choices.

Details of all the options pathways and courses available are on pages 9-16.

A small number of students will have more personalised pathways developed to support their learning needs to maximise their success at Winstanley and in life beyond school. These students may take Entry level qualifications alongside GCSEs.

### Important Dates

A timeline of the options process can be found on page 24.

## Option Pathways

You will be guided by your form tutor, head of year and the senior leadership team to make a number of choices from pathways which are determined by your KS2 levels and the progress you have shown in year 7 and 8.

The pathways are designed to ensure you are able to succeed in your subjects and make choices which will help you to further education or an apprenticeship at post 16.

ASPIRE	Core Subjects					Choose 1	Choose 1	Creative & Practical (Choose 2)
	8 Hours	8 Hours	10 Hours	2 Hours	2 Hours	5 Hours	5 Hours	5 Hours per Subject
	English Literature and Language	Maths	Separate Science	Religious Studies	Core PE	French Spanish	Geography History	Art Business Studies Computer Science Design & Technology (Resistant Materials) Drama Film Studies Geography History Hospitality & Catering Media Studies Music GCSE PE/Sports Studies

MOTIVATE	Core Subjects					Choose 1	Creative & Practical (Choose 3)
	8 Hours	8 Hours	10 Hours	2 Hours	2 Hours	5 Hours	5 Hours per Subject
	English Literature and Language	Maths	Separate Science	Religious Studies	Core PE	French Geography History Spanish	Art Business Studies Computer Science Design & Technology (Resistant Materials) Drama Film Studies Geography History Hospitality & Catering Media Studies Music GCSE PE/Sports Studies

ACHIEVE	Core Subjects					Choose 1	Creative & Practical (Choose 3)
	8 Hours	8 Hours	10 Hours	2 Hours	2 Hours	5 Hours	5 Hours per Subject
	English Literature and Language	Maths	Separate Science	Religious Studies	Core PE	Geography	Art Design & Technology (Resistant Materials) Drama Film Studies Hospitality & Catering ICT Music Sports Studies

# **Core Curriculum Subjects**

**These are the subjects that  
you have to study**

## English Language

Curriculum time: 8 hours per fortnight

Exam Board: Eduqas GCSE

This subject is taken by all as it is a core subject. It will be studied alongside English Literature GCSE. Employers look for good grades in English and so success here is vital for your future.

### Lessons will focus on

1. 20<sup>th</sup> century literature reading and creative prose writing
2. 19<sup>th</sup> and 21<sup>st</sup> century literature non-fiction reading and transactional/persuasive writing
3. Demonstrating speaking and listening skills through:
  - presentation in a formal context
  - responding appropriately to questions and to feedback
  - using spoken Standard English

At the end of the course in Year 11 there will be two written exams, one 1 hour 45 minutes (40%) and one 2 hours (60%). Students will also be assessed on a spoken language presentation.



## English Literature

Curriculum time: taught alongside English Language

Exam Board: Eduqas GCSE

### Lessons will focus on

1. Shakespeare and Poetry
2. Post-1914 Prose/Drama, 19<sup>th</sup> Century Prose and Unseen Poetry

At the end of the course in Year 11 there will be two written exams, one 2 hour (40%) and one 2 hours 30 minutes (60%).

***If you want to know more about either English course, please contact Ms Holmes [cholmes@winstanleyschool.org.uk](mailto:cholmes@winstanleyschool.org.uk)***



## Mathematics

Curriculum time: 8 hours per fortnight

Exam Board: Edexcel GCSE

Mathematics is a core subject and is essential for many jobs and careers. Mathematics is used frequently in other subjects to analyse data, solve problems and think logically. The ability to think mathematically will help in all walks of life.

### Lessons will focus on

#### Number

- Working with numbers and the number system
- Fractions, decimals and percentages
- Ratio and proportion

#### Statistics

- Data presentation and analysis
- Data interpretation
- Probability

#### Algebra

- Expressions and equations
- Sequences and linear functions
- Graphical methods

#### Geometry

- Properties of angles and shapes
- Geometrical reasoning and calculation
- Measures and construction

In this course you will be taught the knowledge, skills and understanding through mental and written calculation, discussion work, practical activities and solving problems. Some students may also study Entry Level maths.

At the end of the course there will be three 1 hour 30 minute exams, two with a calculator and one without.

There are two levels of entry: Higher (grades 9-4) and Foundation (grades 5-1).

***If you want to know more about this course, please contact Mr Moore***  
[mmoore@winstanleyschool.org.uk](mailto:mmoore@winstanleyschool.org.uk)

## Separate Sciences (3 GCSEs)

Curriculum time: 10 hours per fortnight

Exam Board: AQA GCSE

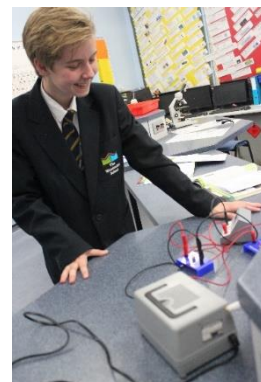
### Lessons will focus on

- Separate teaching of Biology, Chemistry and Physics
- Practical and theory work
- Required practical investigations which must be completed by all students in the three sciences and will be assessed in the written exams.

At the end of year 11 there will be two written exams (105 minutes each) for each subject: Biology, Chemistry and Physics, six in total.

Some students will study the Combined (Double Award) Science route where at the end of Year 11, their exams will be shorter (6 exams that are each 75 minutes long) and these students will gain 2 GCSEs in Combined Science Trilogy.

***If you want to know more about this course, please contact Mr Thacker***  
[pthacker@winstanleyschool.org.uk](mailto:pthacker@winstanleyschool.org.uk)





## Core PE

Curriculum time: 2 hours per fortnight

All students will take Core PE and will have two hours of PE over a fortnight. Core PE is not an examined subject and will not lead to a qualification.

### Lessons will focus on

How to acquire skill, how to evaluate each other, how to prepare for physical activity, and the benefits of physical activity to help lead a healthy lifestyle.

We aim to help all students will experience some activity that they find enjoyable and which they could continue to participate in as they get older.

## GCSE Religious Studies

Curriculum time: 2 hours per fortnight

Exam board: Edexcel GCSE

All students will continue to study Religious Studies throughout their time at school.

### Lessons will focus on:

- Core Christian beliefs, teachings and practices. For example, the significance of Jesus to Christian believers.
- Christian ethics through Marriage and the Family. Also issues related to life and death.
- Core Muslim beliefs, teachings and practices. For example, the differences between Sunni and Shi'a Islam.
- Muslim philosophical views on peace, conflict, crime and punishment. For example, exploring the meaning of Jihad

50% of the course is dedicated to the study of Islam, and 50% to the study of Christianity.

At the end of the course there will be two 1 hour 45 minute exams.

*If you want to know more about this course, please contact Mrs Boyce*  
[nboyce@winstanleyschool.org.uk](mailto:nboyce@winstanleyschool.org.uk)

## SHINE

All students will study SHINE throughout their time at school. This course will not be examined and does not lead to a qualification. However, SHINE covers a wide range of topical issues which support students' personal development and well-being. Statutory themes such as Sex and Relationships Education, Careers and Citizenship are a major part of the SHINE programme.

# **Additional Option Choices**

**These are the subjects that  
you can choose to study**

**You will be guided to make your choices from a specific pathway which is determined by your KS2 levels and your progress across KS3.**

**Please look at your individual options form to identify the subjects that you will be required to make your choices from.**

## Art and Design

Curriculum time: 5 hours per fortnight

Exam Board: AQA GCSE

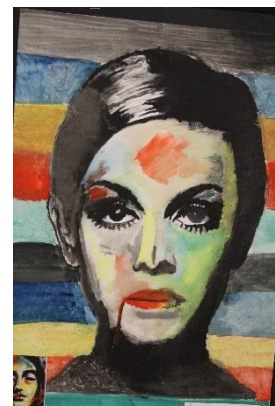
### Lessons will focus on

Developing skills initially through structured workshop based activities and independent self-directed study. The course covers drawing and painting, use of mixed media, sculpture, ceramics, printmaking and photography/photoshop. Students will focus on developing ideas, refining ideas through experimentation, recording ideas and presenting a meaningful response to a given brief.

At the end of the course in year 11 you will have

**Component 1:** Portfolio of coursework: covering all 4 assessment objectives worth 60% of the final mark.

**Unit 2:** Externally set task: which comprises of preparatory studies produced over 15 weeks and a final 10 hour exam (over 2 days).



*If you want to know more about this course, please contact Mrs Hincks  
[chincks@winstanleyschool.org.uk](mailto:chincks@winstanleyschool.org.uk)*

## Business

Curriculum time: 5 hours per fortnight

Exam Board: Edexcel GCSE

### Lessons will focus on

**Theme 1:** How entrepreneurs start businesses

- Key business concepts
- Issues and skills involved in starting and running a small business

**Theme 2:** Growing and global businesses

- How a business develops beyond the start-up phase
- Key business concepts - marketing, operations, finance and human resources

At the end of the course in year 11 there will be two equally weighted exam papers.

*If you want to know more about this course, please contact Miss Le Cras / Mrs Roberts / Ms Collins  
[flecras@winstanleyschool.org.uk](mailto:flecras@winstanleyschool.org.uk) / [aroberts@winstanleyschool.org.uk](mailto:aroberts@winstanleyschool.org.uk) /  
[ncollins@winstanleyschool.org.uk](mailto:ncollins@winstanleyschool.org.uk)*

## Computer Science

Curriculum time: 5 hours per fortnight

Exam Board: OCR GCSE

### Lessons will focus on

Critical thinking, analysis and problem-solving skills through the study of computer programming; including:

#### Computer Systems

- Systems architecture
- Memory
- Storage
- Wired and wireless networks
- Network topologies, protocols and layers
- System security
- Systems software
- Moral, legal, cultural and environmental concerns

#### Computational Thinking, Algorithms and Programming

- Algorithms
- Programming techniques
- Producing robust programs
- Computational logic
- Translators and facilities of languages
- Data representation

#### Programming Project

- Programming techniques
- Analysis
- Design
- Development
- Testing and evaluation

At the end of the course in year 11 there will be two written exams of 1 hour 30 minutes.

*If you want to know more about this course, please contact Ms Collins*  
[ncollins@winstanleyschool.org.uk](mailto:ncollins@winstanleyschool.org.uk)

## Design and Technology (Resistant Materials)

Curriculum time: 5 hours per fortnight.

Exam Board: AQA GCSE

### Lessons will focus on

How to identify and solve real problems by designing and making products. The design process and the impact design has on people and the environment. Develop a broad knowledge of materials, components and technologies and practical skills.

At the end of the course in year 11 there will be a 2 hour written examination (50%) and a controlled assessment task (50%). This assessment will take approximately 35 hours and must be carried out under supervision. Students will be given a design task which they must research, design, plan, prototype and manufacture.

*If you want to know more about this course, please contact Mrs Hincks / Mr Berry*  
[chincks@winstanleyschool.org.uk](mailto:chincks@winstanleyschool.org.uk) / [jberry@winstanleyschool.org.uk](mailto:jberry@winstanleyschool.org.uk)

## Drama

Curriculum time: 5 hours per fortnight

Exam Board: OCR GCSE

### Lessons will focus on

Re-examining the world through kinaesthetic learning.

- **Devising Drama. Practical 30%**  
Creating performance based on a chosen stimuli and a portfolio of evidence of the process and decisions made whilst creating and developing their performance.
- **Presenting and Performing Texts. Practical 30%**  
Demonstrating skills in a live performance, performing or designing two performances from one text. Students have to produce a document which explains their intentions for and approach to the performance.
- **Drama: Performance and Response Written 40%**  
Students study text and performance.
  - Section A. One performance text in detail from a set list.
  - Section B. Analyse and evaluate a live theatre performance.

At the end of the course in year 11 there will be two practical tasks (60%) and one written exam (40%).

*If you want to know more about this course, please contact Mr Finn*  
[jfinn@winstanleyschool.org.uk](mailto:jfinn@winstanleyschool.org.uk)



## GCSE Film Studies

Curriculum Time: 5 hours per fortnight

Exam Board: Eduqas

Film Studies offers an opportunity to study the key elements of film form including cinematography, mise en scene, editing and sound. It is not all about sitting around and watching films; it is about gaining an appreciation of film as an art form in terms of its visual storytelling to enhance your understanding of the world, for example by exploring competing values, attitudes and beliefs.

### Lessons will focus on

As Studying Film enables you to see the world in a completely different light and develop a wide range of transferable skills for further education, work and life:

- Creative Thinking
- Critical Thinking
- Emotional Intelligence
- Film Analysis
- Textual Analysis
- Communication
- Research skills
- Literacy
- Technical competencies (i.e. film editing)

Students of Film Studies are the students of the future, gaining the skills needed to develop healthy careers and great academic minds.

At the end of the course in Year 11 there will be two 1 hour and 30 minute written exams (70%) and one non-exam coursework assignment (30%)

***If you want to know more about the course, please contact Mrs Hendra [rhendra@winstanleyschool.org.uk](mailto:rhendra@winstanleyschool.org.uk)***



## Geography

Curriculum time: 5 hours per fortnight

Exam Board: AQA GCSE

### Lessons will focus on

- Natural Hazards
- Physical Landscapes in the UK
- The Living World.
- Urban Issues and Challenges
- Fieldwork and Geographical skills
- The Changing Economic World
- The Challenge of Resource Management
- Geographical Applications
- Issue Evaluation

A mixture of approaches will be taken in lessons including that of investigating, listening, reading, writing, role-play, topical discussion, debating, ICT use and information processing. There will also be a compulsory fieldwork element with hopefully a residential experience.

At the end of the course in year 11 there will be two 1 hour 30 minute exams (35%) and one 1 hour 15 minute exam (30%)

***If you want to know more about this course, please contact Mrs Cooke / Mr Megginson***  
[ccooke@winstanleyschool.org.uk](mailto:ccooke@winstanleyschool.org.uk) / [mmeqqinson@winstanleyschool.org.uk](mailto:mmeqqinson@winstanleyschool.org.uk)

## History

Curriculum time: 5 hours per fortnight

Exam Board: OCR GCSE

### Lessons will focus on

- The People's Health 1250-2000  
Living conditions, responses to epidemics and how the actions of governments have changed over time.
- The Making of America 1789-1900  
The expansion of the USA, conflict between settlers and Plains Indians, the impact of the California Gold Rush.
- The Norman Conquest 1066-1087  
What England was like on the eve of The Norman Conquest, whether William the Conqueror's victory was down to luck and if 'brutal slaughter' is the best way to describe the means by which he consolidated his power over his new kingdom.
- Living under Nazi rule 1933-45  
Sources and interpretations of the Nazi era to investigate how Hitler was able to establish a dictatorship and how this impacted upon the people living in Germany and other Nazi occupied territories.
- Examination of an important local historical site



At the end of the course in year 11 there will be two 1 hour 45 minute exams (40% each) and one 1 hour 15 minute exam (20%).

***If you want to know more about this course, please contact Mr Rigby***  
[nrigby@winstanleyschool.org.uk](mailto:nrigby@winstanleyschool.org.uk)

## Hospitality and Catering Level1/Level2 Award

Curriculum time: 5 hours per fortnight

Exam board: WJEC

### Lessons will focus on

The theory of how the Hospitality and Catering industry functions, different aspects of the industry from the employers and employees point of view. Developing high quality written work to support practical sessions of cooking a range of dishes to develop your skills ready for the 4-hour practical assignment. Students will be asked to bring in half of the ingredients each fortnight.



At the end of the course in year 11 there will be one written 1 hour 30 minute exam (40%) and a 4 hour practical assignment (completed Jan/Feb) (30%) and written coursework related to the practical assignment (30%).

***If you want to know more about this course, please contact Mrs Derry***  
[sderry@winstanleyschool.org.uk](mailto:sderry@winstanleyschool.org.uk)

## ICT

Curriculum time: 5 hours per fortnight

Exam Board: OCR Cambridge Nationals

### Lessons will focus on

- Knowledge of the digital environment and working with IT.
- Students will do practical activities, learning skills and developing transferable skills like problem solving.

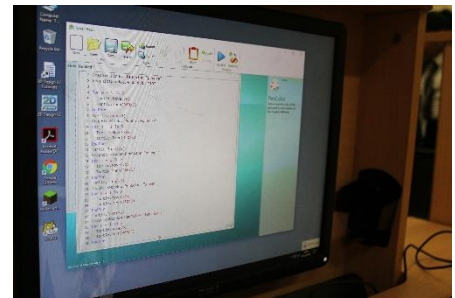
There are two units of work:

**R012** - Understanding tools, techniques, methods and process for technological solutions. This includes knowledge of hardware and software, project life cycle and manipulation of data.

**R013** - Developing technological solutions. This involves following the Project Life Cycle to develop a solution to a real work problem

At the end of the course in year 11 there will be one written exam and one set assignment.

***If you want to know more about this course, please contact Ms Collins***  
[ncollins@winstanleyschool.org.uk](mailto:ncollins@winstanleyschool.org.uk)





## Media Studies

Curriculum Time: 5 hours per fortnight

Exam Board: Eduqas/WJEC

Media Studies offers an engaging and stimulating pathway to develop knowledge and understanding of the Media industry in both a practical and analytical way.

### Lessons will focus on

- Exploring and analysing a range of set media texts that range from magazines to films to video games.
- Understanding and applying media language and the theoretical framework.
- Creating a media product such as a magazine cover or webpage.
- Developing an understanding of the Media Industry.

At the end of the course in Year 11 there will be two 1 hour and 30 minute written exams (70%) and one non-exam coursework assessment (30%)

*If you want to know more about the course, please contact Mrs Hendra*  
[rhendra@winstanleyschool.org.uk](mailto:rhendra@winstanleyschool.org.uk)



## Modern Foreign Language

Curriculum time: 5 hours per fortnight

Exam Board: AQA GCSE

You will be able to choose to study French or Spanish.

### Lessons will focus on

Building on the skills you have learnt and continuing to focus on the four skill areas of:

- Listening
  - Speaking
  - Reading
  - Writing
- 
- Developing communication skills, which will improve overall confidence and enable you to participate in a range of different conversations
  - Practising and embedding key structures
  - Learning a wide range of vocabulary which you will apply to different contexts
  - Practising example type questions throughout the 3 year course

You will be entered for the same tier (foundation or higher) for all four papers.

There will be four exams at the end of year 11 and you will be entered for the same tier (foundation or higher) for all four papers.

Listening examination – 25%

Speaking examination – 25%

Reading examination – 25%

Writing examination – 25%

***If you want to know more about these courses, please contact Mrs Carter***  
[kcarter@winstanleyschool.org.uk](mailto:kcarter@winstanleyschool.org.uk)



## Music

Curriculum time: 5 hours per fortnight

Exam Board: Eduqas GCSE

You must perform either on a musical instrument or with your voice, and must be prepared to practice to be successful.

### Lessons will focus on

- Performing, composing and appraising. You will develop your knowledge and understanding of music through the study of a variety of genres and styles. Genres included are; the western classical tradition, musical theatre, jazz, chamber music, film music and popular music.
- You must perform either on a musical instrument or with your voice, and must be prepared to practice to be successful.



By the end of the course you will have completed one full composition (15%) in year 10 and one full composition in year 11 (15%) plus a minimum of two performances (30%). There is one written exam of approximately 1 hour 15 minutes at the end of year 11 (40%).

***If you want to know more about this course, please contact Mrs Olnier [lolner@winstanleyschool.org.uk](mailto:lolner@winstanleyschool.org.uk)***



## GCSE Physical Education/Sports Studies

Curriculum time: 5 hours per fortnight

Exam Board: Edexcel GCSE

OCR Cambridge Nationals

### Lessons will focus on

#### GCSE PE

- Anatomy and physiology
- Sports psychology
- Exercise and health and the effects of training on the body systems
- Developing three sports or activities, from a wide range of activities
- Developing knowledge of skills and tactics, how to plan and complete a training programme
- Developing leadership and coaching roles

At the end of the course in year 11 there will be two written exam focusing on the theory of Physical Education (60%), with 30% practical based on three sports/ activities and 10% based on producing your own exercise training programme.

#### Sports Studies

- Contemporary issues in sport: 1 hour written exam exploring a range of issues in sport, including participation levels and barriers, promoting values and ethical behaviour, and how sport contributes to society as a whole.
- Developing sports skills: (centre-assessed)  
Learn a range of skills and techniques, different practice methods, tactics and strategies for individual and team sports and understanding of the rules enabling officiation roles within the sport.
- Sports leadership: (centre-assessed)  
Students will learn about the practical skills required to be an effective sport leader. The planning and delivery of safe and effective sporting activity sessions.
- Developing knowledge and skills in outdoor activities - 5 Day Residential  
Students will study a wide range of outdoor and adventure activities. Through planning and participating in these type of activities they will learn about health and safety, risk assessments and the importance of detailed planning for various scenarios and challenging environments. This will also help them develop their communication, decision-making and leadership skills.



At the end of year 11 there will be a 1 hour written exam.

***If you want to know more about these courses, please contact Mr Higgins / Ms Tomblin***  
[khiggins@winstanleyschool.org.uk](mailto:khiggins@winstanleyschool.org.uk) / [etomblin@winstanleyschool.org.uk](mailto:etomblin@winstanleyschool.org.uk)







# What happens next?

w/c 8 <sup>th</sup> February	Option booklets distributed to year 8 students
12 <sup>th</sup> February	Year 8 options film available via school YouTube channel
w/c 22 <sup>th</sup> February onwards	<b>Individual options interviews with students, parents and Miss Le Cras to make choices</b>
19 <sup>th</sup> March	Deadline for Options Forms to be submitted
Summer Term	Individual option choices confirmed in writing

If you require any further help or advice, please do not hesitate to contact Miss Le Cras or the relevant subject leader.