

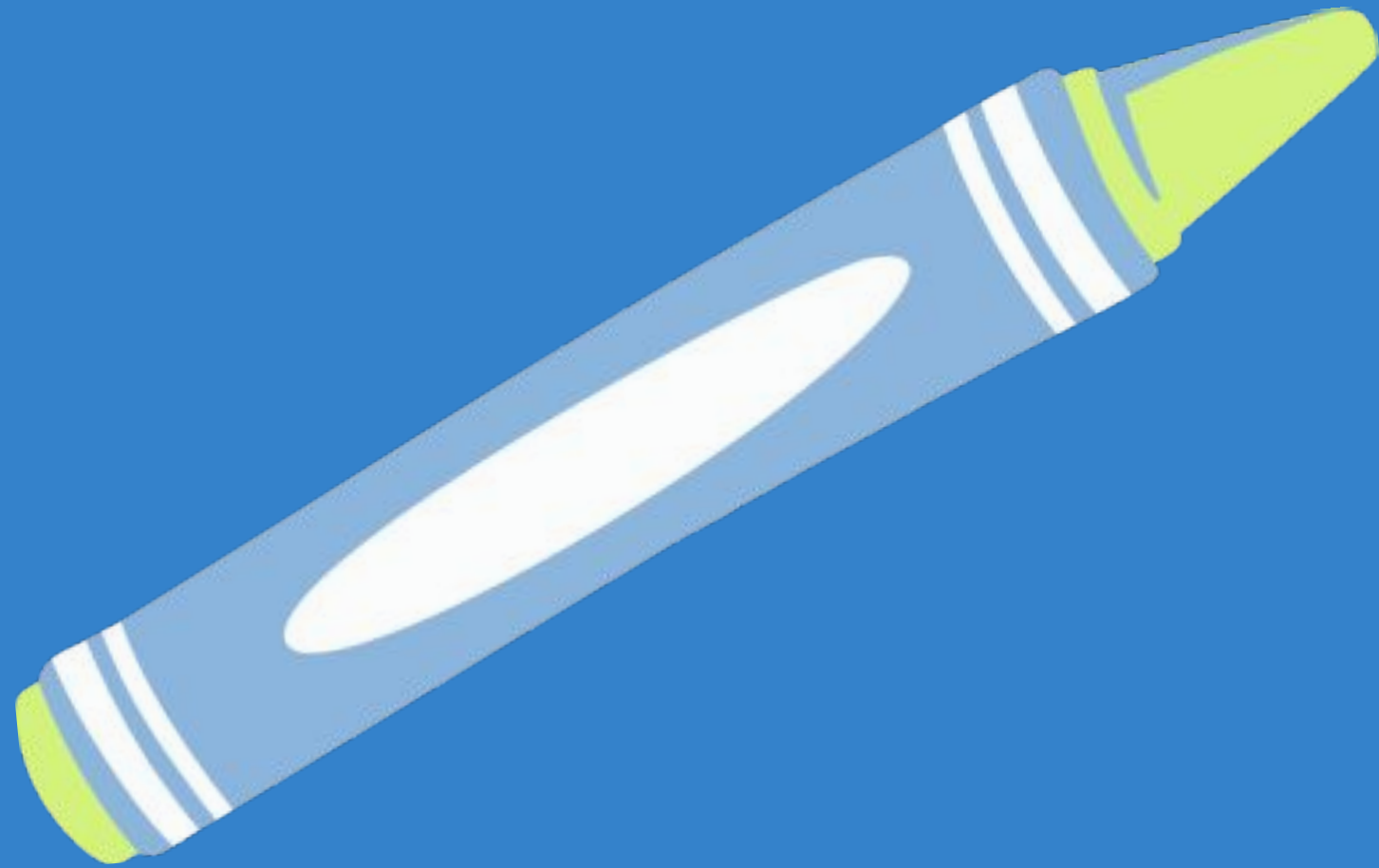


Thursday 19<sup>th</sup> January 2023

# Cold Blue Parents Workshop



# Agenda



1. What is Code Blue?
2. Why Code Blue?
3. What does this look like?
4. Partial vs Full
5. Communication –  
support from parents

# What is Code Blue (Lockdown)?



Protects staff and pupils to a perceived or real threat



Children and staff are 'locked down' within the school building.



A procedure to support a potential threat or real threat

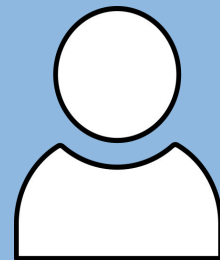
# Why Code Blue?

01



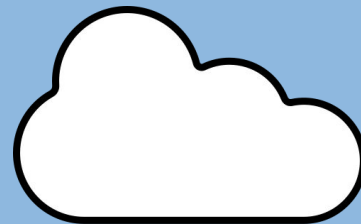
An incident of civil disturbance in the local community

02



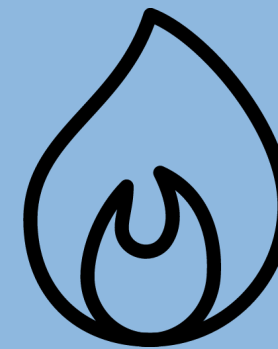
An intruder on site

03



Local risk of air pollution

04



A major fire in the vicinity of the school

05



A dangerous animal onsite



What does this  
look like?

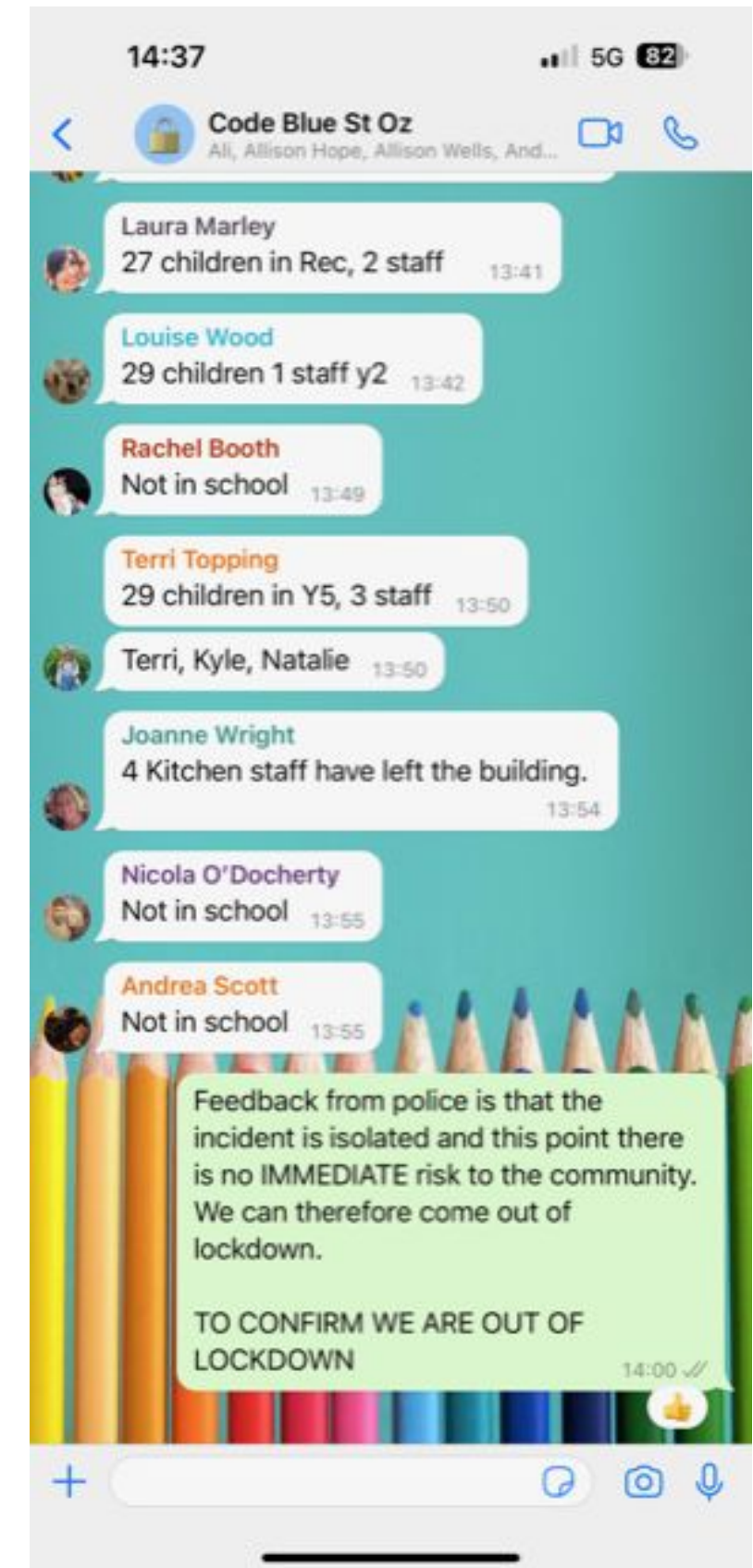
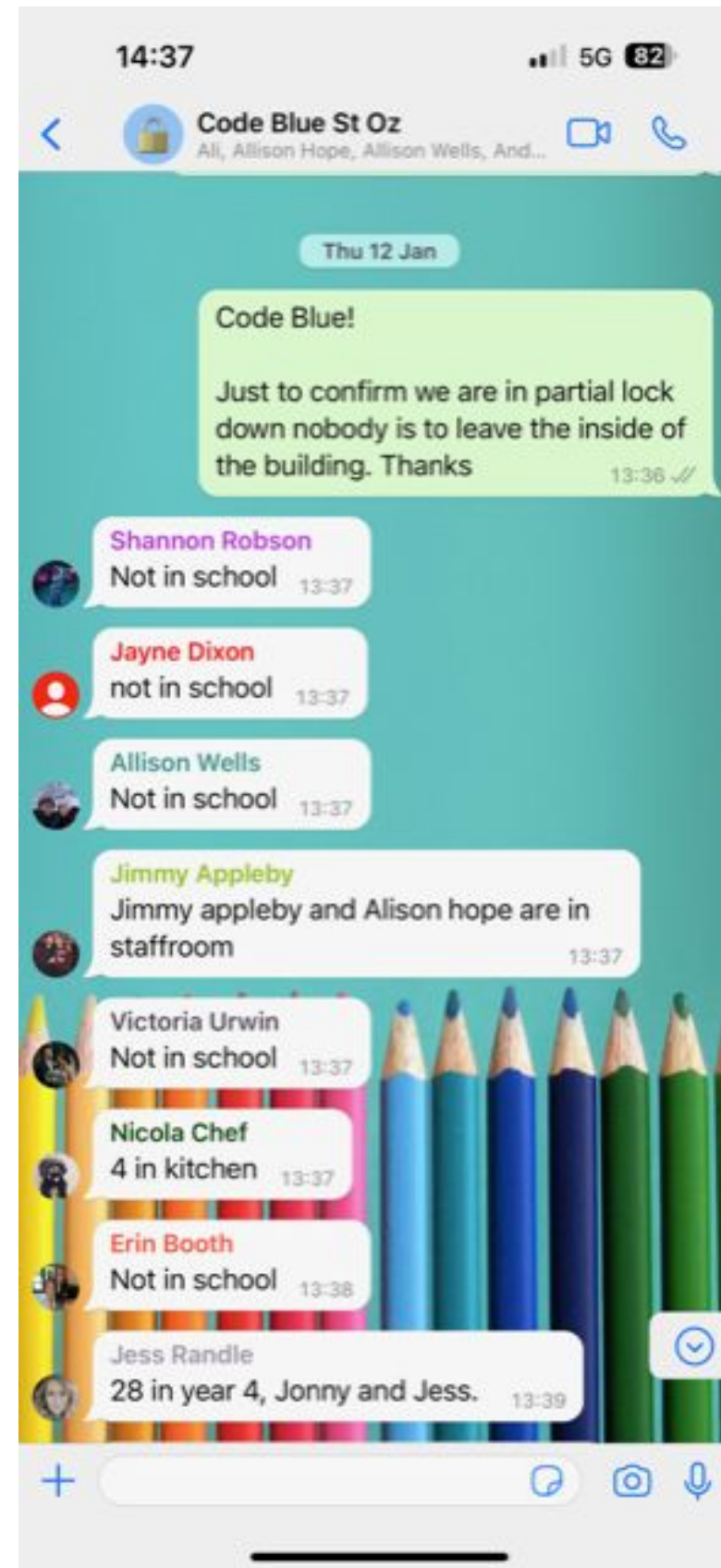
---



School  
Lockdown  
Systems



# How we communicate in school



Partial or Full





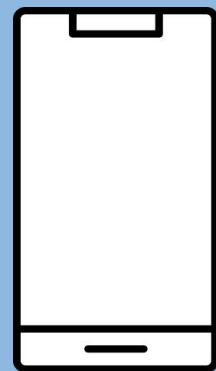
# How can you support us?

01



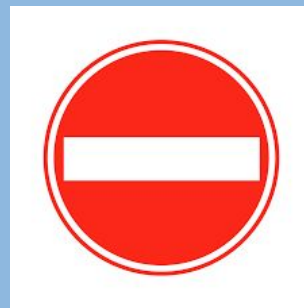
Make sure you have  
the app  
downloaded

02



Keep the  
phonelines free

03



Don't turn up at  
school!

04



Trust Us!

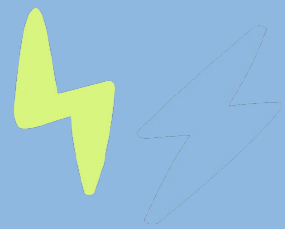
05



Don't share news of  
the lockdown!



# Why we won't share false promises??



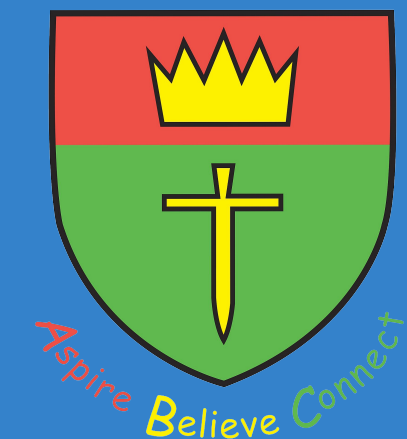
We can't guarantee that everyone is safe – things can change so quickly!



We will take our lead from the police and emergency services.



We will let you know when we are out of lockdown!



Thank you so  
much for  
coming!

