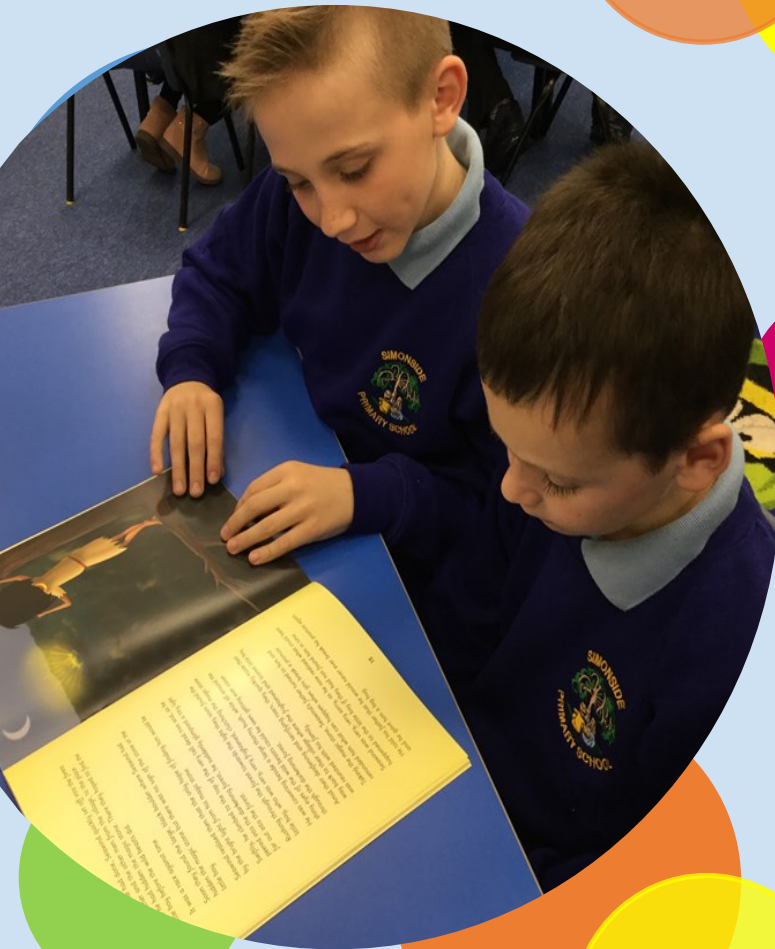




Simonside Primary School



Simonside Primary School
Glasgow Road, Jarrow, NE32 4AU
Tel: 0191 489 8315
Email: info@simonsideprimary.org
www.simonsideprimary.org



Head Teacher's Welcome

Welcome to Simonside Primary School,

My name is Julie Parnaby and it is my privilege to be Head Teacher of this wonderful school.

Here at Simonside Primary School we place the child at the centre of everything we do, always catering for the individual needs of our pupils. This is the time which shapes each child for future life – allowing them to enjoy, explore and experience the joy of discovering on a daily basis.

Our experienced and dedicated staff work extremely hard to make sure that all children are happy and settled in school. We aim to challenge and support our pupils to do their best academically and ensure that they have access to a wide range of other opportunities in school.

We promote independence, respect and good behaviour in everything we do and our children relish the exciting opportunities they are presented with every day.

We welcome you and your children to our school and look forward to working with you in the future.

Julie Parnaby



Our Vision

We aim to provide each child with a **love of learning** and the **drive** and **self-belief** to **aim high**.

**“Believe to
achieve”**

The Simonside Motto

Our School

Simonside Primary School was built in 1950 and officially opened in 1953. Our school has undergone extensive refurbishment over recent years, although we continue to carry out works to modernise the building and improve facilities to ensure we provide the best possible learning environment for our children.

We are a growing school and currently have over 240 children on roll across from Reception to Year 6. Our children achieve very highly on a year-on-year basis and behaviour is excellent.

We are fortunate to have extensive grounds both inside and out, and our school is well resourced, comprising of:

- two large halls;
- our 'Creative Corner' (Art area);
- a sensory room;
- spare classrooms;
- a large school library;
- additional spaces where children and adults can work on a 1:1 or small group basis.

We also have two Hearing Impaired

Units located within Key Stage 1 and 2.

Our outdoor areas are extensive too and we are able to offer children a wide range of outdoor experiences, such as Forest School or story reading in our amazing sensory garden! Our children enjoy participating in outdoor activities during lessons and break times, where a range of playtime equipment is available for their use. We have 3 main yard areas for the children to use during their breaks.



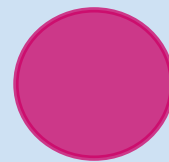


Our School

Our school day begins at 8.55am and doors open at 8.45 a.m. We encourage punctuality, although we ask that children are not on the school premises before 8.40am for health and safety reasons, unless they are attending Breakfast Club.

School finishes at 3.25pm for Reception & Key Stage 1 (Year 1 & 2) children and 3.30pm for children in Key Stage 2. (Years 3 to 6)

Each class has a morning break and afternoon break is for Reception and KS1 only. Each year group has an hour break for lunch.



Breakfast Club

Breakfast Club is open from 8am daily and is FREE of charge to **everyone**. If you would like your child to attend, please contact the school office so that their name can be added to the register.

Children who attend our breakfast club have the opportunity to enjoy a healthy breakfast, socialise with their peers and even have the chance to play games and complete homework.

It really is a great way to start the day and ensure that your child is ready to learn.





School Lunches

Lunches are prepared and cooked on site in our kitchens and offer children a well-balanced, healthy meal with a range of options to choose from, catering for all dietary needs.

The kitchen staff also regularly organise themed meal days which complement the creative curriculum in school.

All Reception and Key Stage 1 children are entitled to a free school meal and we hope that parents will take advantage of this offer. For Key Stage 2 children, the cost is £2.20 per day and can be ordered on a day-to-day basis and is paid for on a Monday for the coming week via ParentPay—our online payment system.

School lunch menus are available to download and view on our school website.

Packed Lunches

Children are welcome to stay for packed lunches should you wish, although we ask that these do not contain fizzy drinks, chocolate, sweets or any foods containing nuts.

Milk & Fruit

Milk is available for children each day for a small charge. Fruit is provided free of charge for all children in Reception & Key Stage 1 & Key Stage 2 children are welcome to bring fruit from home as a snack.



Uniform

School uniform is available to order via the following website: <https://studentuniform.co.uk/ssps196/> . Children's names can be embroidered onto each item at no extra cost.

Items of clothing in our school colours can be purchased from many high street stores and supermarkets.

Our uniform consists of:

- Royal blue jumper/sweatshirt/ cardigan
- Pale blue/white polo shirt or pale blue/white plain cotton shirt
- Grey or black skirt/trousers/shorts (no tracksuit bottoms or leggings)
- Plain black, navy or grey tights
- Plain black shoes (no heels or open-toes)
- Blue checked summer dresses may also be worn

Jewellery, nail varnish and make up is not permitted. Extreme hairstyles and/or hair dyes are also unacceptable. If in doubt, please contact school in advance.

PE Kit

- Royal blue/black shorts (no logo)
- Royal blue, black or grey tracksuit bottoms (no logo)
- White or pale blue polo shirt (no logo)
- Royal blue sweatshirt (no logo) or school hoodie
- Plain black trainers, plain white trainers or plimsolls



Starting out @ Simonside

We understand that the first year of school can be a daunting time and we work hard to ensure that children & parents are well supported through the crucial first steps in learning at Simonside,



Early Years Curriculum

The Reception curriculum is designed to provide children with a rich variety of teaching and learning experiences, appropriate to their needs. Children cover seven areas of learning during their time in Reception. These are:

- Personal, Social & Emotional Development
- Communication & Language
- Physical Development
- Literacy
- Maths
- Understanding of the World
- Expressive Arts and Design

Focused teaching through first—hand experiences and structured play enables children to achieve their Early Learning Goals. Basic skills, including mark making and phonics are also taught explicitly and children are given many opportunities to learn in our outdoor areas.



Our Curriculum

We are **passionate** about creating a curriculum with our **children's interests** at the heart and where **every child** can **achieve**.



Our curriculum is designed to be engaging, creative, fun & child-led. We consistently seek ways to ensure all children are actively involved in their learning and provide a range of fun learning opportunities that inspire life-long, inquisitive learners.

"There is a unique and exciting method of teaching creative and foundation subjects ... classrooms are turned into magical places linked to the topics studied."

OFSTED



Project Based Learning

Staff at Simonside are committed to providing children with a real purpose for their learning, so that they see it has value beyond the walls of the classroom; we achieve this through our Project Based Learning approach. Every term, each class works towards completing a project that has a real outcome with a real audience!

Curriculum Subjects

Through our Project Based Learning, we cover all aspects of the National Curriculum, including:

- English
- Maths
- STEM (Science, Technology, Engineering & Maths)
- Computing
- History
- Geography
- Art & Design
- French (Key Stage 2 only)
- PE (Physical Education)
- RE (Religious Education)
- PSHCE (Personal, Social, Health & Citizenship Education)
- SEAL (Social & Emotional Aspects of Learning)

There is a focus on the teaching of basic skills (including reading, spelling and times tables) throughout the school, although this is delivered in a fun and memorable way. We consistently monitor our curriculum to ensure it is broad, balanced, progressive and meets the individual needs of our children, as well as the demands of a 21st century education.

Homework

At Simonside, we believe that homework should be relevant, manageable and support progress in learning.

With this in mind, we place an emphasis on developing accuracy in spelling, times tables and reading, and homework for these areas is sent home weekly from Year 1 to 6. Children in Reception often have short activities to reflect topics covered in class.

Immersive Learning

At Simonside, we believe that the best way to learn is through real, first-hand experiences; this is why we fully immerse our children in their learning by completely redesigning our learning environments on a termly basis. Visitors are welcome to pop into school to look at the latest themed classrooms and corridors & experience the 'buzz' for learning that our curriculum creates.





Computing Facilities

At Simonside, we are extremely proud of our computing curriculum... children in Y2 - Y4 are currently on a 1:1 iPad learning programme and all of our other year groups have regular access to class sets of iPads, which integrates computing throughout the whole school curriculum. We take great pride in being the first school in South Tyneside to run a 1:1 iPad learning programme, as well as all of our teachers being certified 'Apple Teachers'.

We have a number of programmes which can be accessed through the internet so children can transfer their learning between home and school. These include: Reading Eggs, Timestable Rockstars and Mathletics.

We have a school website, school Facebook page and an established Twitter account, which is popular with parents, as it provides a window into school life.

We also use 'Seesaw' as an online learning platform for children, with private access for families.



www.simonsideprimary.org



@simonsideschool



PE @ Simonside

In PE, our pupils will develop fundamental skills in Games, Dance, Gymnastics, Athletics, Outdoor and Adventurous Activities and Swimming which they can transfer and apply to positively impact on their mental attitude. This will ensure they are confident, determined and passionate about their learning so they are physically active for life and reach their maximum potential.

We specialise in all aspects of P.E. and have excellent facilities with 2 large halls and extensive yards and fields.

We have a large covered area for bikes and scooters and regularly host cycling proficiency training for Key Stage 2 children, and balance bike training in Reception.

We take part in competitions and events throughout the year and children take part in swimming lessons in KS2.

Forest School

At Simonside, all of our year groups take part in half termly sessions at our Forest School, which is led by an official Forest School teacher, Sam Jackson from 'Sc.Out.Ed'. The sessions provide amazing outdoor lessons and are always exciting, engaging and aim to develop a stimulus for classroom learning. Over recent years we have noticed that our Forest School lessons have encouraged a genuine love for the outdoors across all year groups at Simonside. Some of the activities include; den building, bush crafts and even outdoor art! Our Forest School sessions run in all weather conditions... **the wetter, the better!**



OPAL

At Simonside, we are following an Outdoor Play and Learning Programme—the aim of Opal is to promote the quality of play within school. Our children are able to use a variety of equipment to promote sharing, negotiating and help children to work in a more co-operative way.

Buddies @ Simonside

We operate a buddy system where Year 6 children are paired with Reception children to ease their transition into full-time school., including supporting at Sports Days & on the yard at break times. Children throughout the school pair up on a weekly basis for 'reading Buddies', which is hugely successful.



"There is a tangible commitment to the all round development and wellbeing of every single pupil, enabling them to flourish academically and socially."

OFSTED



Inclusion @ Simonside

Simonside is an inclusive school and we are very proud of our positive and accepting ethos. Inclusion celebrates diversity and minimises the barriers to learning that children may face, irrespective of age, ability, gender or social background. We work closely alongside parents/carers and other agencies (if appropriate) to ensure children's well-being and secure maximum progress.

Whilst inclusion is a school-wide responsibility, Mrs Lowe is our SENDCo (Special Educational Needs & Disabilities Coordinator) and has responsibility for monitoring the provision and progress of all children with SEND, EAL (English as an Additional Language) and any other children with specific needs.

We have an excellent record for promoting success for children with a range of difficulties and have a high pupil/staff ratio which allows for more personalised learning. Our staff are well-trained and experienced in supporting children with a broad range of needs and have a wide range of up-to-date resources which are used to scaffold learning.

Should you have any concerns about your child's progress, please contact their class teacher or Mrs Lowe.

Further information can be found on our website.





"Pupils who attend the Hearing Impaired Unit make outstanding progress as their complex learning needs are well understood by staff. They are fully involved in lessons and school life"

OFSTED

Hearing Impaired Bases

There are 2 Hearing Impaired Bases at Simonside and children have individual programmes, working in both the base and with their mainstream classes. The aim is to fully include all children in the life of the school. The Hearing Impaired Bases are an asset to the school as we all benefit from many aspects such as being part of the signing choir.

The bases have Specialist staff, including qualified Teachers of the Deaf and additionally qualified Nursery Nurses. Specialist equipment is also provided.



Safeguarding

The safety and well-being of our children is our priority at Simonside; we adopt policies that are recommended by South Tyneside Local Authority and we regularly review our practice. Reception and Key Stage 1 children must be collected from school by a parent or carer. We operate a password system for those rare occasions when another named adult needs to collect your child. We are a very secure site and gates to the school yard areas are locked between 9.15am and 3.15pm. Visitors should call at the office between these times.

Parking outside of school is challenging and road safety is an ongoing concern. We recommend that use of cars be kept to a minimum whenever possible. Please be prepared to give yourselves plenty of time and to drive slowly and park sensitively. The car park at the front of school is very small and manoeuvring is difficult. Drivers should be aware that the speed limit is set at 5MPH. We discourage as many cars as possible from using this area. Visitors sign in and out at Reception and are escorted whilst in school. All staff and volunteers are subject to Barring and Disclosure checks and receive regular training in this area. Every activity and Educational visit is risk assessed and the use of mobile phones is limited in school. The Fire Safety Officer regularly visits school and advises on procedures. We have a number of trained First Aiders in school.

Children are educated in appropriate aspects of health and safety throughout the curriculum, including: safe use of the internet, first aid, road and bike safety and anti-bullying initiatives.



Attendance Matters @ Simonside

Attendance REALLY matters to everyone at Simonside Primary School. We make the most of every minute to maximise learning so it is vital that your child does not miss any school unless it is absolutely necessary. Attendance and punctuality is a legal requirement and regular attendance is crucial in terms of securing progress and ensuring all children maximise their potential during their time with us.

We believe that we can all work together to ensure that every child attends school as often as possible.

We operate reward systems for good attendance and punctuality and

these include: prizes and certificates for 100% attendance and a weekly class competition which feeds into a special class reward at the end of the term.

If your child is ill, please phone school before 9.15am on the first day of illness, to give a reason for the absence. Please indicate when your child is likely to return and keep school informed of any developments.

Any persistent or unauthorised absences or lateness will be recorded and passed on to the Attendance Officer who will contact parents.

The Government does not allow schools to authorise any holidays, during term time, apart from in 'exceptional circumstances'.

If holidays are taken without authorisation, the Local Authority may fine parents. All details, including forms, can be requested from the school office.

Full details of our attendance procedures can be found on our school website.

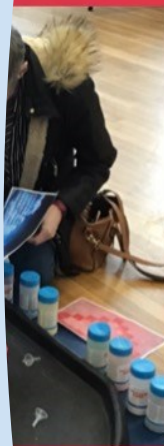


Parental Partnership

Simonside is passionate about involving parents/carers in all aspects of your child's learning; children make the most progress when parents are actively involved in their learning. We offer a number of ways for parents/carers to get involved...

We actively encourage Parental & Community involvement through:

- Our open door policy—please come and speak to us at any time about your child or any way in which you feel we could support you further
- Invitations to discuss your child's learning & progress at Parent's Evening (held twice each year)
- Invitations to assemblies, productions & presentations
- Regular Family Learning events
- Invitations for parents/carers to support our school by: hearing readers, accompanying school visits, supporting topic work (or any other way in which you would like to support us)
- Friends of Simonside





"The role played by the
Governing Body is
becoming increasingly
important in setting the
strategic direction of the
school."

OFSTED

Helping @ Home

Supporting your child with their learning at home is very important and there are lots of fun and informal ways to do this.

You will receive information about your child's homework arrangements on a weekly basis.

We recommend that you hear your child read for a short time every day and that you adopt a positive approach at all times as reading should be a pleasure and never a chore.

Each child has their own personal login details to access Reading Eggs, Mathletics and Times Table Rockstars, which they can use both in school and at home.



Assemblies

Children attend short assemblies on a daily basis and these take many different forms. On a Friday, a whole school celebration assembly is held.

We operate a star pupil system which is very popular with the children.

School Bags

Please ensure that your child brings a bag to school every day as often reading books and other items are given out and it is very difficult for children to carry all of this without a bag!

We sell school bags for £2.50 and P.E. bags for £1.50 at the school office.

Medicine in school

We have a clear medicines policy in school and have trained First Aiders who are able to administer medicines if necessary. Parents are required to bring any medicines to the school office and will be asked to fill in a detailed form before they can be given during school time.

Our Staff

Leadership and Management Team

Mrs J Parnaby—Head Teacher

Mrs L Pegman—Deputy Head Teacher

Mrs E Lowe—SENDCo

Mrs N Sultan—Behaviour Lead

Teaching Team

Mrs A Blair

Miss F Bradford

Mr Howard

Mrs E Mason

Mrs E Lowe

Miss H Pearce

Miss T Quinn

Mrs L Souter

Mrs N Sultan

Miss A Tucker

Mrs G Wright

Support Staff Team

Mrs L Allsopp

Miss K Andrews

Mrs V Dick

Miss D Dodds

Miss N Ford

Mrs D Fox

Mrs L Hardy

Mrs D Little

Mrs J Mason

Mrs H Smith

Mrs M Smith

Mrs H Stamps

Non-Class Based Staff

Mrs R Gibson & Mrs C White —
Attendance and inclusion Coordinators

Mr Lee — Site Supervisor

Sam — Forest School Teacher

Mrs V Grainger — Administrator

Miss N Ramsey — Cleaning Staff

Mrs S Faye — Cleaning Staff

Miss D Chandler — Cleaning Staff

Lunchtime Staff

Mrs S Faye

Ms S Bainbridge

Mrs K Gallant

Miss N Ramsey

Mrs D Ridley

Miss J Roberts

Mrs S Smith

Mrs W Pounder

Our Governors

We have a very active and involved Governing body at Simonside who often visit and who meet at least once per term to decide school policies and to ensure the smooth running of the school.

The Governing Body is made up of staff, parents, local authority representatives, community members and the Head Teacher.

Parent Representatives are elected by parents and have a 4 year term of office.



What do people say about our school?

"Everyone is friends and takes care of each other. We are practically one big family"

Y6 Pupil

"Simonside is a great school with very dedicated staff"

Parent

"I would advise anyone to send their children there"

Parent

"A lovely school that has done everything to help and support my child"

Parent

"I like this school because it is friendly and there is no bullying"

Y3 Pupil



"There is a continuing drive to ensure that all pupils reach their full potential by making the maximum possible progress from their starting points."

OFSTED