



PRINCIPAL CANDIDATE PACK

Bishop Lonsdale Church of England Primary Academy
St Chad's Academies Trust

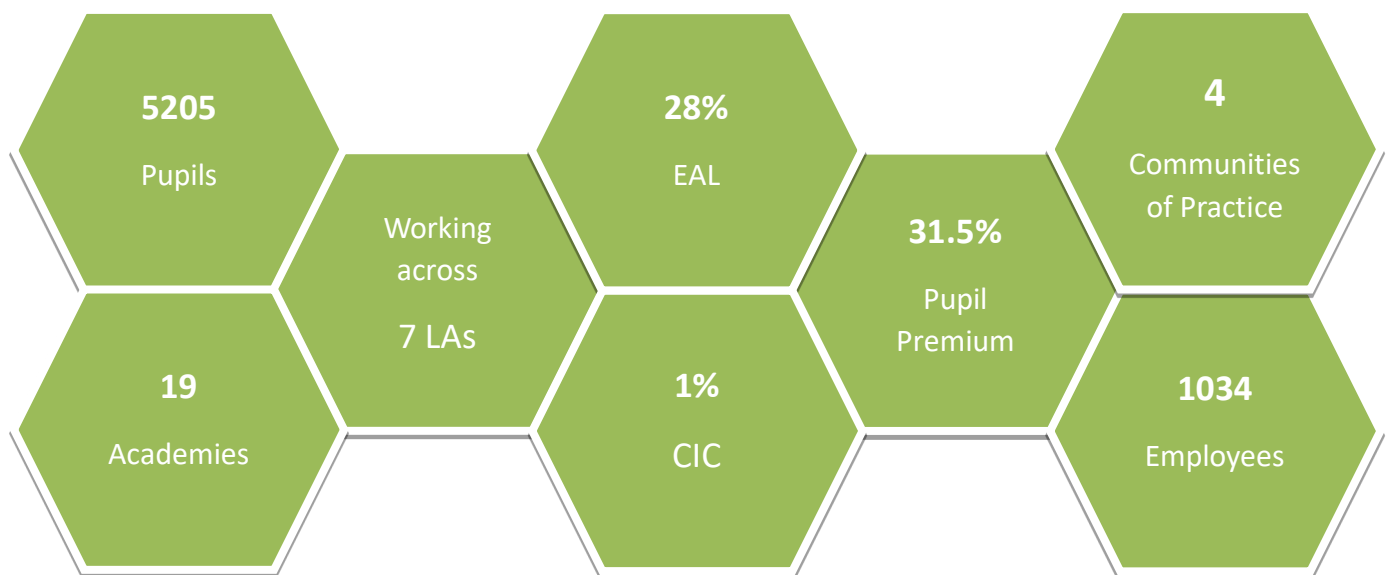
St Chad's Academies Trust thrives from the rich diversity of each other's communities, working together, seeking the common good, raising standards and aspirations, working for equality and hope for all.



Welcome from the Chief Executive Officer

As the Chief Executive Officer of St Chad's Academies Trust I am pleased that you have shown an interest in this new and exciting post as Principal within the Trust.

As the Diocesan Multi Academy Trust for the Lichfield Diocese our Christian values underpin all that we do to improve outcomes and life chances for the children in our care. Our focus is, and will always remain, **'Children First'**.



As the largest Primary Multi-Academy Trust in the West Midlands Region there are nineteen academies within the Trust across seven local authorities.

- Sandwell
- Stoke-on-Trent
- Staffordshire
- Shropshire
- Telford and Wrekin
- Walsall
- Wolverhampton

We enjoy effective partnerships with the local authorities that we serve, and benefit from sharing good practice across the region. We celebrate and benefit from rich, diverse communities and work with academies situated in small villages to large inner-city organisations.

We have developed four Communities of Practice where smaller groups of academies geographically connected meet and work together on generic and identified issues and developments. We also meet regularly as one family to support, guide, challenge and look out for one another.

Our success is attributed to open and honest relationships, where academy leaders shoulder the responsibilities of all children within the Trust and work for the success of other academies as well as their own, working together for the greater good and actively demonstrating effective system leadership. We are in this together!

We work in an environment where we learn together collectively as a group. Everyone sees the bigger picture and understands how parts of the organisation connect to each other and the whole. Attitudes, behaviour, and the overall culture within the organisation are embedded and have become a successful learning community.

We believe:

- All children have the right to the **best education** that can be provided.
- All academies **can improve** to become good and outstanding.
- All children and young people in our care have an **entitlement to spiritual care** and guidance.
- Every academy will **champion the ethos and values** of the Trust enabling children to clearly identify themselves as children of God.
- All staff have access to well-planned, **bespoke professional development** to meet the needs of the academy and the individual
- **Partnership and collaboration** with and between academies will bring about **significant improvement** in the education of all children in our care.

We are seeking to appoint a like-minded leader for Bishop Lonsdale CE Primary Academy.

Bishop Lonsdale is a successful and high performing Academy, enriched and enhanced by a hard-working energetic staff who put children at the forefront of their thinking. Children are nurtured and flourish within the academies taking full advantage of the opportunities laid before them.

If you want to make a difference to the lives of children, support fellow colleagues and help develop leaders for the future then please express your interest. If you would like further information or a conversation before taking this exciting step, please don't hesitate to contact me via chloe.norton@stchads.uk who will be happy to arrange a conversation.

Sue Wedgwood
CEO, St Chad's Academies Trust

Bishop Lonsdale CE Primary Academy

Overview

Bishop Lonsdale Church of England Primary Academy is based in the town of Eccleshall, close to Stafford and accessible from Junction 14 on the M6. There are 255 pupils in the academy including 26 pupils in nursey. Within the Academy pupil premium and free school meals are 5.8%, SEN 55.4% and English as an additional language 0.7%, all groups well below national average.

The Academy was inspected in July 2019 where the academy continued to be good:

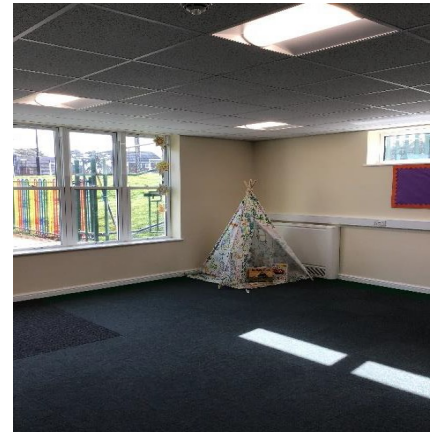
Leaders rapidly identified the strengths of the school and areas of improvement.

Pupils are enthusiastic, keen and inquisitive learners.

High quality teaching leads to standards that are above the national average.

(OFSTED 2019)

The Academy is currently experiencing a period of growth due to extensive housing developments in and around the town. In partnership with the Local Authority an extension to the Academy of two classrooms is near completion.



Bishop Lonsdale Church of England Primary Academy caters for children 3-11 and provides before and after school provision for families in the area.



The Academy has recently embarked on the development of a Forest School which will enable the children to have real experiences of the environment through science, geography and art as well as

developing key life skills. The children and staff are extremely excited about the Forest School and the new developments.



Vision for the academy;

We will aspire that our Academy will be a caring, happy and safe place where all adults and children can flourish and achieve their God given potential for

“Everything is possible for someone who has faith” Mark 9:23

Our Core values are;

Love Friendship Compassion Courage Justice

Our Motto;

Believe Achieve Inspire



Thank you for taking the time to read through this brochure, which we hope will have provided you with a clear scope of Bishop Lonsdale Church of England Primary Academy and what we seek to develop, embed, and nurture on our continual journey.

For further information or an application pack please contact;
chloe.norton@stchads.uk