

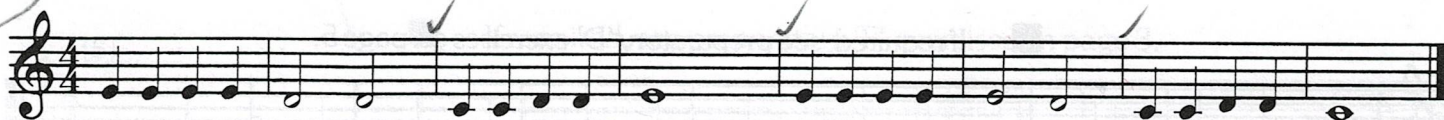
1st &  
2nd valves

## The note E

■ This page fits harmonically & rhythmically with the one opposite.



## C, D and E together



■ When played in conjunction with *The Lost Note* (opposite) fits with *F Book*, page 1, line 8.

## The lost note

A SEMIBREVE  
lasts for  
FOUR beats



## Tricky tune!

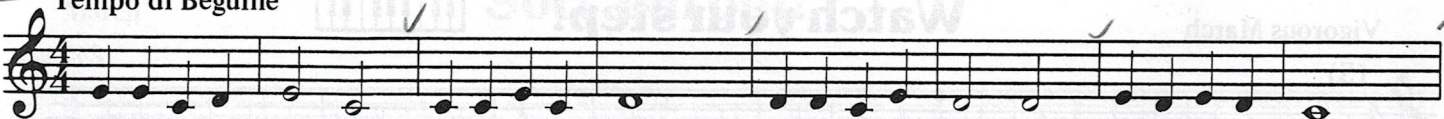


■ This can be played in conjunction with *Acapulco Bay* opposite.

## Acapulco Bay



Tempo di Beguine



■ Proceed up to F on page 9; or down to B on page 10.

The 'S' symbol means the music can be slurred throughout, if the teacher wishes.