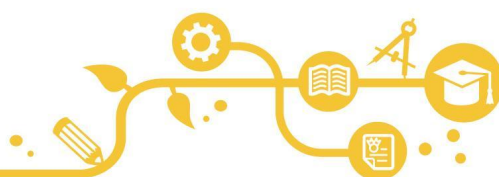


**Information On The Possible  
Establishment Of  
A Satellite Site For Keelman's Way School  
May 2023**





## Introduction

This leaflet is to inform parents of pupils at Keelman's Way School, staff, governors, and other stakeholders of the possible establishment of a satellite site, in part of the former South Shields School. Your views are important and will be considered when Cabinet decide on whether to move to the next stage which is the publication of statutory notices.

## Background

As part of the duty to secure appropriate provision, a Joint Strategic Needs and Assets Assessment (JSNAA) of children and young people with SEND was undertaken in 2021 and identified various changes in the demand for places, including an increased demand for places for Autistic Spectrum Disorder (ASD). The demand for places for pupils with Severe Learning Difficulties (SLD) and Autism has continued to increase since that assessment.

## Proposal

To meet the increase in demand for places for pupils with SLD and Autism, the proposal is to establish up to 16 places at a Keelman's Way School satellite site for pupils who have an Education, Health and Care Plan (EHCP) with SLD or Autism as their primary special need. An area within the former South Shields School, which is separate from Epinay School, which relocated there in September 2022, has been identified as being suitable as a satellite site. The site identified needs minimal changes and would therefore be ready to accommodate additional pupils from September 2023.

All the pupils attending the satellite provision will be on roll at Keelman's Way School and they will receive the same teaching and support as they would if they were taught on the Keelman's Way School site.

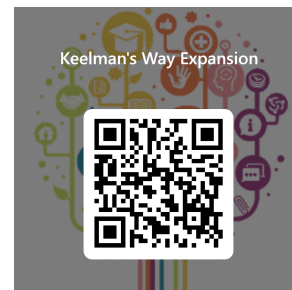
## Responding to consultation

If you would like to respond to this consultation, please click on the following link –

<https://forms.office.com/e/wL7uUTz1h8>

Or scan this QR Code with your phone

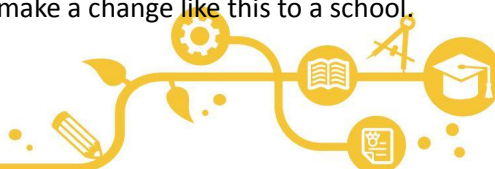
The survey will be open until **Friday 26<sup>th</sup> May.**



## What will happen next?

Careful consideration will be given to all responses that are received on or before 26th May 2023.

These responses will be used to inform us how to develop this proposal, ready for a formal consultation that is needed to make a change like this to a school.





Copies of this consultation document can be made available on request in a variety of formats in addition to this one e.g. Large Print, Easy read, Audio, or translated into another language

