



# Keelman's Way School

'An inclusive, happy and successful school'



## Post 19 Information



Next Steps

Independence

Life Skills

Internship

Future

Opportunities

Achieve

Adulthood

Progress

Bespoke

Evolution



# Foreword

## We're with you every step of the way.

At Keelman's Way Post 16, we take a focused, proactive approach to helping our students prepare for adulthood and the transition to college and beyond. We realise the process can be daunting as well as challenging, and we're here to help every step of the way. We understand that each of our learners are unique and we tailor our services to your student's specific strengths, interests and needs.

Our Post 16 small class sizes and nurturing learning environment enable our staff to develop a clear profile of your student's capabilities and social skills. This allows us to help students choose Post-19 pathways to maximise their learning potential and empower them to pursue a promising and independent future. We aim to present students and families with every available option and opportunity, from admission process to identification of appropriate Post 19 Provision and the transition process.

We support our learners to make choices about their future from their Y9 review onwards. Learners and their families are encouraged to consider their aspirations for the future in terms of accommodation, education, training and employment. With the support of external advisors, we help them to investigate their options and future pathways. Visits to a number of colleges are organised for parents and students from Y11 onwards and transition is carefully managed to ensure a successful move for all our learners into their chosen Post 19 provision.

This brochure has been compiled in order to provide a comprehensive account of Post 19 provisions within the South Tyneside borough and beyond. Each of the services included tailor for their learners in different ways. It must be stressed that all of the colleges included are not suitable for everyone of our learners.

We hope you find this a useful guide to the choices available

Mrs P Selby

Head Teacher

## What the college says.....

**South Tyneside College (STC)** is a general further education college with specialist provision tailored to meet the needs of students with a range of learning difficulties from mild/moderate to severe, and including those with autistic traits.

Courses within the Foundation Learning Department are aimed at students who do not yet feel ready to access mainstream provision and would benefit from a tailored programme with high levels of support.

We also offer a range of specialist support across college in all curriculum areas. This support includes:

- Classes taught in small group size
- A personal tutor to monitor progress and assist with day to day queries
- Learning support assistants (LSA) to provide support in and out of class as needed
- Supervision over lunch, break and transport (if necessary)
- Sensory room and quiet areas within specialist provision and across college
- Specialist equipment inventory
- Specialist exam arrangements
- Individualised targets for academic success and personal development
- Additional support with English and maths



Specialist support and services such as dyslexia, teacher of the deaf and CSW support, counselling service and personal care.

Type of provision	Number of students	Age range	Course dates	Course length
Do you want to go and live at college or travel in every day?	Do you want a small college or to be in a larger environment?	Check the age of students accepted at the college you're interested in.	Some colleges start new courses annually and others more frequently.	These can vary from 36 to 52 weeks per year.



Day provision only



Varies



16-25 years



September (Full Time)



38 Weeks per year



# ROUTE2WORK COLLEGE

Tel: 0791 8641795

Email: [rebecca.ramsden@groundwork.org.uk](mailto:rebecca.ramsden@groundwork.org.uk)

Website: <https://www.groundwork.org.uk/hubs/north-east-and-yorkshire/projects/route2work-college/>

## What the college says.....

**Route2Work College** is part of the Groundwork charity and is based at Jar-row Hall House and is rated good by OFSTED. Route2Work College offers learners the change to get hands on experience on a working farm and use practical skills to manage and develop the land. Learners also gain qualifications in animal care or land based studies.



All learners at Route2Work have an EHCP and are aged between 16 and 24. Class sizes are small and lead by experienced and skilled tutors and support workers. Our goal is to support young people to develop their employability, communication and life skills in order to achieve their future goals (further education, employment, independent living and ultimately live a happy and meaningful adult life). We offer a personalised curriculum including functional skills maths and English and a range of pastoral, work experience and enrichment activities .



Day



Small

Maximum  
25 learners  
enrolled



16-25 years



September



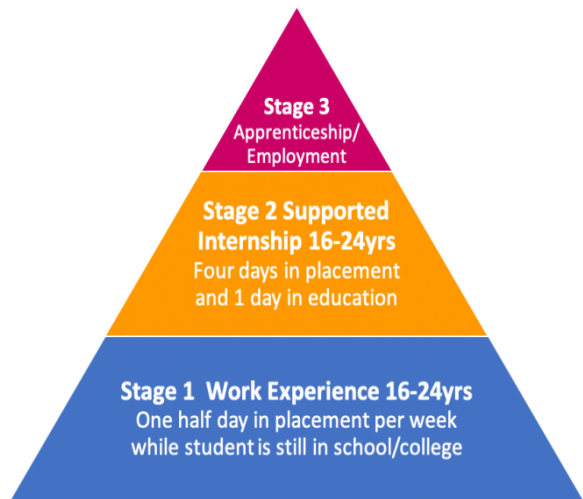
38 Weeks  
per year

Mon-Thurs

*Supported internships - project choice for 16-24 year olds with disabilities, learning disabilities, difficulties and/or Autism.*

*What the college says.....*

Project Choice is a programme that helps young adults gain work experience and improve employability and independence skills. We provide internships within healthcare settings and other NHS partner organisations in supported environments helping to get individuals ready for the working world. Our support is tailored to each person and we match employment options to each person's skills. Our students spend 1 year learning work skills in three placements, each placement is up to 12 weeks long.



Day provision only



Varies



16-24 years



September (Full Time)



38 Weeks per year

## Offering specialist individual study programmes

supported by an interdisciplinary team of tutors, therapists and job coaches.



## What the college says.....

Hedleys College is a high quality specialist further education and training provider for young people aged 16-25 with a range of learning difficulties and disabilities who require specialist individual programmes to develop their communication, independence and employability skills to make a successful transition into adulthood within the North East region. The College site is based at Forest Hall in Newcastle and offers a range of programmes and flexible packages of further education and training across Tyne and Wear. The College is part of the wider Percy Hedley Foundation which offers a range of support for students who attend our provision. This includes access to high quality integrated therapy, social enterprises, the Hedley Employability Project and the Hedleys Sport and leisure facilities.



Residential  
And Day



100 Max



16-25 years



September  
(Full Time)  
All Year  
(Part Time)



38 Weeks  
per year

AutismAble are a specialist education service and wellbeing centre for people with Autism Spectrum Conditions (ASC) in South Shields, Tyne and Wear.



## What the college says.....

We believe that helping people with Autism live the best life they can is only possible through a holistic approach – one that gives them opportunities both to learn toward conventional qualifications, gain employment and explore and build confidence in their identity through their own hobbies and interests.

Personalisation is the most effective way to meet our learner's needs. Autism commonly manifests as a tendency toward intense engagement with particular interests and we design our work with that in mind. For example, if a person with Autism has a special interest in music, we can use this both to help build their confidence through performing and also use their taking part in these activities as a gateway to engage with our other services.



Day  
Only



Varies



16-25 years



September  
(Full Time)



38 Weeks  
per year

## For young people with Autism spectrum, Asperger's syndrome and associated difficulties



### What the college says.....

The College opened in 1995 and has a well-qualified staff team that are highly experienced in autism specific teaching, learning and support.

Based in Sunderland and Newcastle, the College provides day and residential education for young people between the ages of 16 and 25 years with an autism spectrum condition (ASC). Students come from across the country to access this specialist provision that enables them to achieve their personal ambitions.

The majority of our students have additional and complex needs including learning disabilities, ADHD, mental health conditions, behaviours that challenge and sensory issues.



Residential  
And Day



110 Max



16-25 years



Mainly Sep-  
tember and  
throughout  
the year



38 Weeks  
per year



Independent specialist college offering learning for living and work, increasing social and economic inclusion.

## What the college says.....

Coherence and personalisation are key concepts of the college's curriculum. Learners are offered a programme that is tailored to their individual needs, taking account of their starting point and their long term aspirations. Personalised programmes are designed so that all learners can participate, achieve and make progress. For some learners progression may be lateral, representing a broadening, generalisation or consolidation of skills. Accreditation is used where meaningful to meet learners' long-term goals aspirations. The college uses the staged process of recognising and recording progress and achievement (RARPA) for recording non-accredited learning and progression.



Accreditation is used where meaningful to meet learners' long-term goals aspirations. The college uses the staged process of recognising and recording progress and achievement (RARPA) for recording non-accredited learning and progression.

Learning programmes are designed to increase meaningful outcomes that all learners' need for the next stage in their education or lives.



Residential  
And Day



40 Max



16-25 years



Mainly Sep-  
tember and  
throughout  
the year



38-52 Weeks  
per year

# Henshaws Specialist College removes the barriers to allow students to access learning.

## What the college says.....

Henshaws Specialist College is the only specialist Further Education College in North Yorkshire that offers both day and residential programmes up to 365 days per year at our beautiful campus located on the outskirts of the historical spa town of Harrogate. We deliver transformational and sustainable life changing experiences and learning through bespoke education, care, therapy and clinical programmes for young people ages 16 to 25 with special education needs and disabilities. We offer study programmes from Pre-entry to Level 2. Each programme supports students to achieve and exceed targets set in Education, Health and Care plans and to meet their aspirations after College.



Residential  
And Day



100 Max



16-25 years



Mainly Sep-  
tember but  
flexible



37 Weeks  
per year

Supported internship with external providers.

Students must be independent travellers.

Students should be working towards, and be able to achieve level 1 Maths and English

## What the college says.....

As a fully inclusive college, we pride ourselves on offering the very best quality of education to those with learning difficulties, physical and sensory disabilities and those with a specific learning difficulty such as Dyslexia or Aspergers.

Part of our offer includes Project Choice, an award-winning programme which gives young people with learning difficulties, disabilities and autism the employment edge and the skills and experience needed to get into work.



Day Only



Varies



19-25 years



September



38 Weeks  
per year

## Gateshead College pathways

Gateshead College offers a range of supported programmes for young people with learning difficulties, disabilities and autism, all designed to help young people become more independent and confident, preparing for further study, work or independent living.

Project Choice programmes are based at the Baltic Campus near Gateshead Quays and are delivered by Gateshead College with the support of private sector businesses.

Through Project Choice, students have the opportunity to gain the skills and qualities they need to get a job. To access any of the Project Choice programmes, students must have an Education, Health and Care Plan.

### Preparing for Adulthood

This is a one year personalised study programme. Students will develop the personal and social skills you need for adulthood, such as independent travel, social skills and integration and living well. They will spend half a day each week on a work experience placement, introducing them to the world of work and enabling them to gain an insight into different career possibilities.

### Preparing for Work - Stage 1 (Project Choice 1)

On this course students will go to college for one year. They will spend one day a week on placement and four days at college. When they are at college they will learn employability and social skills. Gateshead College will also teach students about independent travel, how to manage money and healthy living. The aim is to help students become work-ready.

### Preparing for Work - Stage 2 (Project Choice 2)

A supported internship means students do three days each week on work placement, a day in college studying employability skills and a day in college studying maths, English and developing job searching skills. Students can have up to three placements in one year and Gateshead College will work with students to find suitable placements that match their interests and skills



Day Only



Varies



19-25 years



September



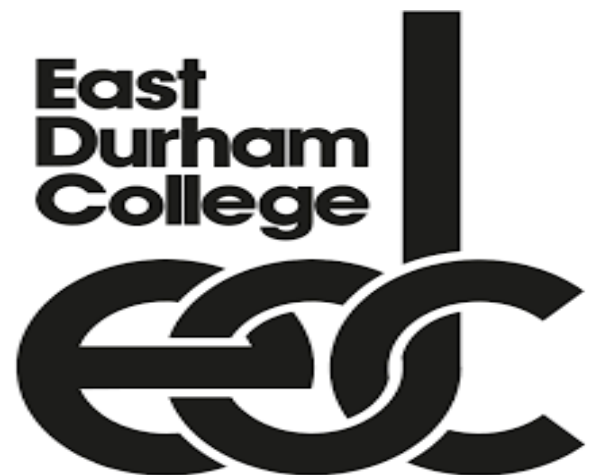
38 Weeks  
per year

## What the college says.....

Our Entry Level Study Programmes (Foundation Learning) provide a vocational programme with specific foundation learning pathways, designed to meet the needs of students who may have a range of learning difficulties and/or disabilities.

The pathways offer a wide range of subjects, tailored to the correct level to meet the needs of each individual learner, who is interested in horticulture, ceramics and catering.

The study programme offers a holistic approach to learning and personal development, which is centred on the progression of the individual within a vocational area, along with maths and English, social, emotional and independent living skills.



Day Only



Varies



19-25 years



September



38 Weeks  
per year

## What the college says.....

### Learning for Independent Living

The course is ideal for those with learning difficulties disabilities, who want to develop their independent living skills. This course will centre on helping you to develop as a person. You will work closely with your tutor to focus on the areas you need to work on. You will agree on targets and continue to monitor your progress so that you can reach your long term goals. As this course is individual to you, you could be working on areas such as your independent travel, social development, independent living skills, maths and English as well as other skills.

Your course could include the following:

- tutorials
- English, Maths and ICT
- independent living skills
- personal social development
- real working environment
- visits to employers
- enrichment activities.



Day Only



Varies



16-25 years



September



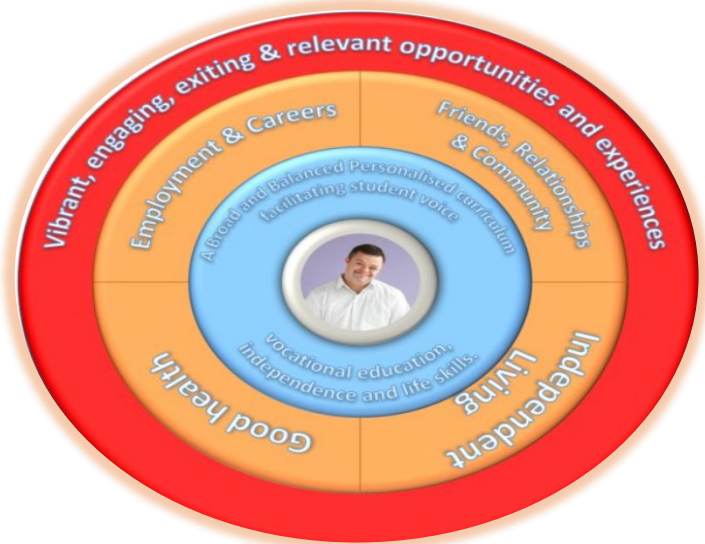
38 Weeks  
per year

Person centred programmes which support greater independence , stronger community involvement and improved employability opportunities.

What the college says.....

**At Catcote Futures we work together to:**

- Provide stimulating and exciting learning experiences for all;
- Promote lifelong learning and enhance life and work skills;
- Recognise and value the achievement of each individual;
- Develop responsibility, tolerance and consideration for others;
- Strengthen the bond between college, home and the wider community;  
Build partnerships with business and commerce.



Day Only



85 Max



19-40 years



September  
but flexible



38 Weeks  
per year



Natspec is the voice of specialist further education. We are a membership organisation for specialist colleges within the UK, and also provide training to the wider sector regarding young people with learning difficulties and / or disabilities.

<https://natspec.org.uk/>



Colleges  
Directory  
2020 / 2021

