

Weekly Bulletin 23rd September 2022

Week Commencing
Tuesday
26th September 2022

B

Transport to School—BUSES INFORMATION:
Oxfordshire School Transport information and timetables can be found [HERE](#).
Public Buses: Thames travel Timetables can be found [HERE](#).
Public Buses: Thames Travel BB3 Timetable can be found [HERE](#).

Weekly Bulletin and Letters: <https://www.langtreeschool.com/letters/>

If you have any safeguarding concerns regarding a child please contact: Ms Burman, Deputy Head Teacher and Designated Safeguarding Lead sburman@langtreeschool.com
Ms Wood, SENCo and Deputy Safeguarding Lead swood@langtreeschool.com Mrs Belcher, Head of Year 7 & 8, and Deputy Safeguarding Lead bbelcher@langtreeschool.com
For further information on Safeguarding please read our Safeguarding Policy in the school website

OPEN EVENING: A huge THANK YOU to all those students who participated in the open evening last night. It was a great success and our students made us extremely proud. Parents had lots of questions and our students were confident, informative and engaging.

SPONSORED WALK—Pease pay your sponsor money to school using the ScoPay system. The walk was a great success, thank you to all those who helped by marshalling the walk for us.

INSET DAYS : Friday 30th September and Monday 3rd October 2022—no students in school.

Curriculum Information Evenings: The slides from the information sessions can be found [HERE](#).

ALL YEARS: SCHOOL PHOTOGRAPHS will be taken in school on Tuesday 27th September 2022

Year 7 Creativity Day 9th November 2022: Please read this [LETTER](#) about the whole year trip to The Tower of London

Year 9 Duke of Edinburgh Information Evening: The information and the letter from the DoFE information can be found [HERE](#): [LETTER](#) and [TRAINING DATES](#)

Year 11 and Year 10 Post 16 Options Evening: Thursday 6th October 5.45 -7.30pm we will be holding our Post 16 Information Evening. Representatives from local post 16 education and training providers come to Langtree to promote their venue and courses. Our students and parents can explore some of the options they have available to them for next year. Please put this date in your calendar.

The CAMHS School In-Reach team are offering a parents awareness session on **Managing Teenage Anxiety on Monday 26th September 6.30-7.30pm** via MS teams. This presentation will explore teenage anxiety and how to talk with your young people about what they are feeling. It highlights the difference between appropriate levels of anxiety and when additional help might be needed. It explores what might keep anxiety going and provides an overview of Cognitive Behavioural Therapy as well as a number of useful techniques which parents can use to support their child.

Microsoft Teams meeting	Meeting ID: 329 360 047 679 Passcode: QqdXNB Download Teams Join on the web	Learn More Meeting options
Join on your computer, mobile app or room device Click here to join the meeting		

Covid-19: The current advice from the NHS is that adults who have tested positive should stay at home for 5 days and children under the age of 18 who test positive should remain at home for 3 days. Staff and students should only return to school if they are well enough to do so. Where families have any specific medical concerns our advice remains that you should visit the [NHS website](#) in the first instance.

2nd Hand Uniform: We have received a huge amount of 2nd hand uniform, and so are unfortunately unable to accept any more donations at the present time. We do however have a lack of grey jumper so would be happy to accept these. If you need anything, please call the office, or pop in and take a look. We have plenty of blue jumpers, trousers, skirts and sports kit. All the proceeds go to the school!

PTA: Love Our Langtree day to help support the school in keeping the outside areas looking cheerful and tidy, due to take place on **Sat 1st October**. Please read the letter from the PTA about this event: [HERE](#)

This is your PTA and we need more parents involved to ensure we can continue supporting the school in the next academic year. We would love to hear from you to let us know you are interested in joining the PTA committee in any capacity.

If you would like your email address to be added to the PTA contact list, please email Gillian McCoy pta-secretary@langtreeschool.com
Vicky Weller and Helen Scurr. Co-Chairs of the PTA.



LOVE OUR LANGTREE

Please join the PTA again to tidy up our school grounds and improve our learning environment

SATURDAY, 1st October 2.30-5pm

Gardening, sweeping, tidying, weeding, a lot of camaraderie, satisfaction guaranteed, plenty of snacks and drinks!

New areas and exciting plans to work on! (see letter)

Please bring: sweeping brushes, dustpans and brushes, garden forks, garden waste containers, secateurs, weeding tools, hoes/scraping tools, wheelbarrows, strong muscles, gardening gloves, and as many willing helpers as you can!

If you can't join us, please could you donate a medium-large shrub instead?? Ideally evergreen and/or low maintenance. Please can these can be delivered to school reception on Friday 30th September, or to the afternoon event

RSVP TO: pta-treasurer@langtreeschool.com

Thank you so much for making a difference

Careers Notice	Link
Labour Market Information (LMI) is information about the current economic and employment situation. It includes data on graduate destinations, average starting salaries, current trends in employment sectors and recruitment patterns. People need labour market information to help them make informed education, training or career decisions. The link shows LMI for Oxfordshire. It is worth noting that a rise in self employment (especially solar self employment) is one of the key national trends we are seeing, in addition to, hybrid work and automation.	The latest Market Information for Oxfordshire
Careermap has something for you. You can find apprenticeships, courses, graduate programmes and many more to give you the kick start you need to thrive in the industry of your choice. We're experts within the career sector, which enables us to provide young people, students and graduates with up-to-date labour market information and career support.	https://careermap.co.uk/careermag-parents-carers-guardians/
We are delighted to announce our first webinar of the year to be held on Wednesday 5 October 2022 at 6-7 pm. The Year 11: Post 16 Options webinar is ideal for Parents/Carers and Students to attend.	Post 16 options webinar
On Tuesday 4th October between 5pm – 7:30pm we're hosting our Careers in Business & Accountancy evening and have teamed up with some of the biggest accountancy and professional service firms in the world, PwC, Mazars, Grant Thornton, KPMG and others! If you're interested in learning about careers in Business or Accountancy and would like to hear all about student/work experience & apprenticeship opportunities at the companies involved as well as taking part in some great workshops and networking, then sign up.	Careers in Business and Accountancy
On Monday 26th September from 5:00pm - 6:00pm join us for our kick-off event with BT where you will get a one-hour introduction to who they are and what they do and see if a career with them might be for you!	Insight to BT Group



THE ORATORY

6TH FORM OPEN MORNING

Saturday 1 October



NEW 6TH FORM CENTRE - NOW OPEN!

HMC CO-EDUCATIONAL 11-18 CATHOLIC BOARDING AND DAY SCHOOL
Near Reading • 01491 683522 • registrar@oratory.co.uk • oratory.co.uk

[CLICK HERE TO BOOK YOUR PLACE](#)



LOVE OUR LANGTREE

Please join the PTA again to tidy up our school grounds and improve our learning environment

SATURDAY, 1st October 2.30-5pm

Gardening, sweeping, tidying, weeding, a lot of camaraderie, , satisfaction guaranteed, plenty of snacks and drinks!

New areas and exciting plans to work on! (see letter)

Please bring: sweeping brushes, dustpans and brushes, garden forks, garden waste containers, secateurs, weeding tools, hoes/scraping tools, wheelbarrows, strong muscles, gardening gloves, and as many willing helpers as you can!

If you can't join us, please could you donate a medium-large shrub instead?? Ideally evergreen and/or low maintenance. Please can these can be delivered to school reception on Friday 30th September, or to the afternoon event

RSVP TO: pta-treasurer@langtreeschool.com

Thank you so much for making a difference

Students have made a great start to the new year. Please see below some of our rules and expectations. For further details, please see our website. Ms Burman—Deputy Headteacher.

Student Handbook

Please see a copy of the student handbook which has been given to all students: [HERE](#). I want to draw your attention to pages 10, 11 and 12. If your child has been given a detention, they are expected to write it in their handbook on page 10. They should show you the handbook so that you are aware of the detention. Similarly, pages 11 and 12 are to record any equipment that is missing. Please look at these pages periodically so that we are all aware of any issues that are arising. If there are any problems with equipment, please do not hesitate to contact your child's Head of Year.

Mrs Belcher - Year 7 & 8

Ms Godfrey - Year 9

Ms Phipps - Year 10

Mr Sinnamon - Year 11

Punctuality Matters

Please ensure your child arrives in school before 8.40am - ideally at 8.30 am. Tutor time starts promptly at 8.40am. We will endeavour to email you when your child is late to school and persistent offenders will receive a Senior Leader Detention. We will email parents when students are late to lessons and we are very grateful for the support parents give us to ensure that this is rectified. Visitors to the school often remark on our calm and purposeful atmosphere and we want to maintain this high standard.

Attendance

The past couple of years have been very turbulent - understandably. Our attendance for last academic year was 92% . Our attendance target for this year is 96%.

We would appreciate your cooperation in refraining from taking your child out of school in order to avoid disruption to their learning. We do understand that medical appointments cannot always be arranged outside of school hours; however, we do expect all reasonable attempts to be made for your child to attend school before and / or after the appointment.

If your child's attendance is below 90% - they are considered to be a persistent absentee by the local education authority and this will have a detrimental effect on their learning. Students with low attendance will be closely monitored by the pastoral team.

Holidays taken in term time will not be authorised (unless the circumstances are exceptional). Any unauthorised holidays may incur a fixed penalty fine.

Please note absences can only be authorised by Ms Burman, Deputy Headteacher - all request for absences or notification of absence must be emailed to studentabsence@langtreeschool.com

Mobile phones

Please remind your child that students are not allowed to use their mobile phones without a teacher's permission when they are in the school building.

Jewellery

This is a polite reminder that students are allowed to wear one small plain stud, gold or silver, in each ear. They are permitted to the stud either in their ear lobe or helix. No hoops, transparencies etc are allowed. We do not allow any plasters to cover non regulation jewellery. Students will be asked to remove any non regulation jewellery and items will be kept in the school office. Parents can collect items, otherwise students can collect any items on a Friday at the end of the school day.

Relationship and Sex Education (RSE policy)

Please see the [RSE draft policy](#). If you have any comments about the lessons, please do contact Ms Morel on emorel@langtreeschool.com.

Students and parents are encouraged to read the policy each year for consultation. Consultation period ends September 23rd 2022.

Student Health

Please be aware that there has been a rise in cases of nerve damage linked to the use of nitrous oxide, commonly known as NOs.

'Experts say that as the use of the drug has risen so too have cases of spinal cord and nerve damage, including paralysis' (Guardian 30th Aug 2022)

While it is illegal in the UK to supply nitrous oxide for human consumption or to sell it to children, it is not illegal to possess the drug. Users often buy small silver canisters of the gas – known as whippits because of their original purpose as whipped cream chargers – and inhale it from a balloon. The rise in medical cases is due in part to the NOs now being available in larger canisters - users are inhaling more gas and therefore experiencing greater effects - including the negative ones.

[Please use this LINK to see the Wellbeing provision at Langtree School](#)



Dive into a good book



Here are some suggestions for great books to jump into.

[Year 7 Must Reads](#)

[KS3 Recommended Reading List](#)

[Brilliant Books for KS4](#)

Students: please download the Woodcote Library app onto your phone to help you manage your library account.

COURTYARD TABLE TENNIS

(OUTSIDE BOYS CHANGING ROOMS)

MONDAY - YEAR 7

TUESDAY - YEAR 8



**Bake Off to raise money for
MacMillan Cancer research**

**Bake a cake to represent an
European country**

Sign up in room La2 by Friday 23rd



**Cake will be sold for
50p a slice during Thursday
29th in the canteen!**



**Come have a look at
their beautiful
creations. There will
be a prize for the
winners.**

TERM 1 CLUBS

Staff Lead	Department	Club Name	Which year group (s)	Where is the club held	Day	Anything else students need to know?
Mr Henderson	Music	Orchestra	Year 7, Year 8, Year 9, Year 10, Year 11	Music Room	Monday Afterschool	Rehearsals end at 4.30 pm
Miss Thorburn	English	Debate Society	Year 9, Year 10, Year 11	En2	Tuesday Lunchtime	
Mrs Lackey (Club run by Anne Wigmore from REACH)		Christian Union	Year 7, Year 8, Year 9, Year 10, Year 11	Science 1	Tuesday Lunchtime	Starts on 13th September. Everyone welcome. Sessions alternate every 3 weeks between games, questions and a talk. We will start next week with games and biscuits!
Mrs Jarvis	History	History Film Club	Year 7, Year 8, Year 9	H2	Tuesday Lunchtime	starting 13th Sept. 1st Film The Horrible Histories Movie
Mrs Pimm	Drama	KS3 Drama Club	Year 7, Year 8, Year 9	Main Hall	Tuesday After School	3.05-4.15pm weekly from 13th September, through Term 1
Ms Burman	Student Services	LGBT+	Year 7, Year 8, Year 9, Year 10, Year 11	Hums3	Wednesday Week B Lunchtime	Anyone welcome. The group's aim is to break stereotypes, celebrate identities and explore issues to do with LGBT+ issues.
Miss Thorburn	English	Debate Society	Year 7, Year 8	En2	Wednesday Lunchtime	
Mr Henderson	Music	Senior Choir	Year 9, Year 10, Year 11	Music Room	Wednesday After School	Ends at 4.30 pm
Mr Henderson	Music	Junior Choir	Year 7, Year 8	Music Room	Thursday Lunchtime	Students should come straight to the music room and eat their lunch in the music room.
Mr Nonweiler		Dungeons & Dragons	Year 7, Year 8, Year 9, Year 10, Year 11	En2 (TBC)	Thursdays After school	3pm to 4pm. No previous experience required. Not on some Thursdays when Mr Nonweiler is running detention. Students will need to "sign up". More information to follow in a tutor time!
Mr Jones	Maths	Chess & Cubing Club	Year 7, Year 8, Year 9, Year 10, Year 11	Ma2	Friday Lunchtime	Chess sets and cubes provided!

SPORTS CLUBS TERM 1

Students of any ability are welcome at all clubs	LUNCH		AFTER SCHOOL	
	BOYS	GIRLS	BOYS	GIRLS
MONDAY	GCSE BADMINTON SPORTS HALL 1.30-2.00		KS4 + GCSE BADMINTON SPORTS HALL 3.00-4.00	
TUESDAY	YEAR 7 FOOTBALL ASTRO	YEAR 8 & 9 FOOTBALL ASTRO 1.30-2.00	YEARS 8 & 9 RUGBY MATCHES & TRAINING	YEAR 8 & 9 HOCKEY ASTRO
WEDNESDAY A	YEAR 8 FOOTBALL ASTRO	YEAR 7 FOOTBALL SPORTS HALL 1.30-2.00	YEAR 10 & 11 RUGBY TRAINING AND	YEAR 7 HOCKEY MATCHES AND TRAINING
WEDNESDAY B	YEAR 9 FOOTBALL ASTRO		TRAINING UNLESS FIXTURES	
WEDNESDAY			RUNNING CLUB - WITH MR SUDBURY FIELD 3-4.00PM	
THURSDAY	GCSE PE THEORY CLINIC YEAR 10 - A WEEK	YEAR 10 & 11 FOOTBALL ASTRO 1.30-2.00	YEAR 7 RUGBY MATCHES AND TRAINING SOUTH OXON	YEAR 10 & 11 ASTRO
FRIDAY A	YEAR 11 FOOTBALL ASTRO 1.30-2.00			
FRIDAY B	YEAR 10 FOOTBALL ASTRO 1.30-2.00			

**Important Dates for your Diary:
The Duke of Edinburgh's Award
@Adventure Dolphin Open Evenings
at**

**Adventure Dolphin, Dolphin House, Whitchurch Road,
Pangbourne RG8 7DA**

**Silver and Gold Award - 26th September 2022, 7:30pm
Bronze Award - 3rd October 2022, 7:30pm**

Come and find out how we can help you achieve your own
Duke of Edinburgh's Award

Available to ALL young people from year 9 to their 25th birthday

Contact: dofecoordinator@adventuredolphin.co.uk for more details or just
come along on the dates above



More information about the Duke of Edinburgh's Award can be found: www.dofe.org
www.adventuredolphin.co.uk/dukeofedinburghsaward

Adventure Dolphin (Pangbourne) is a registered charity with the Charity Commission:
The Adventure Dolphin (Pangbourne) Charity: Charity number 1156978

Pangbourne 10k Multi-terrain Sunday 25th September 2022

10.00am



A multi-terrain
race route
through the
beautiful woods
and countryside

Children's races for
ages 5-7 and ages
8-11 with medals
for all runners and
prizes for winners

Chip timing
Coffee bar
Cakes, snacks
and
cold drinks

We have kindly been sponsored by



Enter now at pangbourne10k.org.uk

The race is suitable for beginners and all profits are in aid of Pangbourne Primary School

Pangbourne10k



Pangbourne10k



@Pangbourne10k



FOPPS
Friends Of Pangbourne Primary School

family information Day

British
Dyslexia
Association

**Join us Saturday 24th September 10-2pm
for the British Dyslexia Association's first-ever Family Information Day**

Thursday 1st September	Inset Day
Friday 2nd September	Start of Term 1 for Year 7 students - Induction Day
Monday 5th September	Start of Term 1 for all other students.
Thursday 22nd September	OPEN EVENING - half day for student's, school ends at 1.20pm
Friday 23rd September	SPONSORED WALK
Friday 30th September	INSET DAY
Monday 3rd October	INSET DAY
Friday 21st October	End of Term 1
October Break – Monday 24th October – Friday 28th October 2022	
Monday 31st October	Start of Term 2
21st November to 2nd December	Year 11 Mock Exams
Monday 5th December	INSET DAY
Friday 16th December	End of Term 2 (Half Day)
Christmas Holiday – Monday 19th December 2022 – Monday 2nd January 2023	
Tuesday 3rd January	Start of Term 3
Thursday 9th February	End of Term 3
Friday 10th February	INSET DAY
February Break – Monday 13th February – Friday 17th February 2023	
Monday 20th February	Start of Term 4
Friday 31st March	End of Term 4
Easter Holiday – Monday 3rd April – Friday 14th April 2023	
Monday 17th April	Start of Term 5
Monday 1st May	May Day Bank Holiday
Friday 26th May	End of Term 5
May Holiday – Monday 29th May – Friday 2nd June 2023	
Monday 5th June	Start of Term 6
Friday 23rd June	INSET DAY
Friday 21st July	End of Term 6 (Half Day)



WE ARE HIRING!

Aspens Services is currently recruiting for a General Assistant for maternity cover to join our friendly team at Langtree School.

If you would like further information, please get in touch to arrange a chat.

CONTACT AMANDA AT
LANGTREE.SCHOOL@ASPENS-SERVICES.COM

Your School Nursing Service

Someone you know and can trust...

Your School Nursing Service can work both in and out of School to help provide or find you support about:

Keeping Healthy

Immunisations

Emotional Health

Weight Management

Sexual Health

Drugs and Alcohol

Smoking

We can also help make sure that young people with disabilities, long term illness, or other needs can receive extra support when they need it. If we can't provide the help ourselves, we will connect you with someone who can.

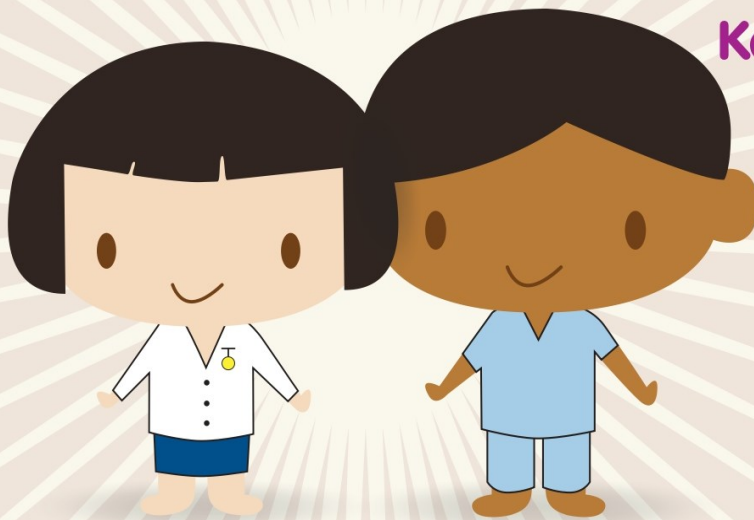
When and Where can I Access my School Nursing Service?

Your School Health Nurse is Jody Coleman. Jody will be in school Friday afternoons only.

If you would like to see Jody, please attend Drop In on a Friday lunchtime

Email: lisa.clayden@oxfordhealth.nhs.uk

Text ChatHealth on: 07312 263084



Confidential

We provide a confidential service. This means that you can discuss personal information in confidence. We will not discuss your personal information with anyone else without your permission. This includes parents and teachers. We would only pass on your information in order to protect you or someone else from serious harm. Whenever possible we would discuss this with you first.

Qualified

School Nurses or Specialist Community Public Health Nurses are qualified nurses or midwives with specific graduate level education, and work with a team to support you.

Non Judgemental

We are here to help, not to judge.