

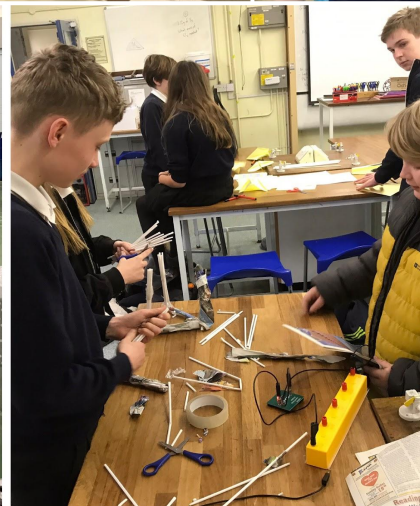
PUTTING LEARNING FIRST.

When a student arrives at Langtree School, they will be welcomed by a community which prioritises learning, celebrates achievement and nurtures the individual.

Staff and students are challenged to be the very best they can be; everyone at Langtree School is expected to embrace the core values of Courtesy, Respect and Tolerance. We strive to build excellent links with all members of our community. We believe that creative thinking and wider collaboration will deliver the best opportunities for learning.

When a student leaves Langtree School they are prepared and empowered to face the challenges and opportunities of learning, working and living that lie ahead of them.

Langtree School Open Events 2022



'A Leading Edge School with Outstanding Students'

Year 7 Ambassadors :

“The teachers are all so kind and lovely.” a newly arrived year 7 student

Information on Our Webpage



ABOUT US ▾ STUDENTS ▾ BULLETIN AND LETTERS PARENTS ▾ LEARNING FIRST ▾ GOVERNORS ▾

Head's Welcome

Virtual Open Evening / Morning

Values and Ethos Statement

Prospectus

Admissions

Year 6 Transition to Langtree School

Contact Us

Facilities Hire

Ofsted Reports

End of Key Stage 4 Results

School Policies and Statements

Staff List

Vacancies

Woodcote Community Information ▶

Open Evening and Open Mornings

Our Open Evening will take place on Thursday 22nd September 2022, with Open Mornings on Wednesday 28th and Thursday 29th September...

[Read more](#)

Senior Leadership Team

- Head Teacher - Simon Bamford
- Deputy Head - Sarah Burman
- Assistant Head - Charlotte Davies
- Assistant Head - Chris Nonweiler
- Assistant Head - Susannah Wood

A small, vibrant school with a ‘wonderful ethos that is empowering students’ - Ofsted

- 620 *fantastic* students who are at the heart of our school.
- Dedicated, professional, invested specialist staff - very little staff turnover.
- A strong family ethos with very *supportive* parents.
- The capacity to recognise and value the *individual*.



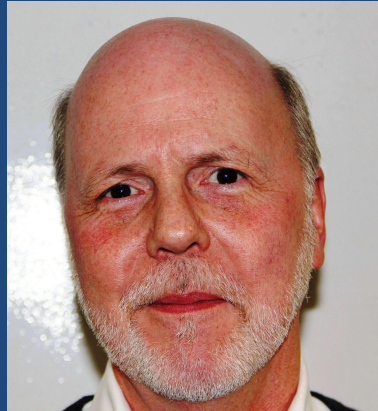
‘Students’ behaviour is impeccable and exemplary’
- Ofsted



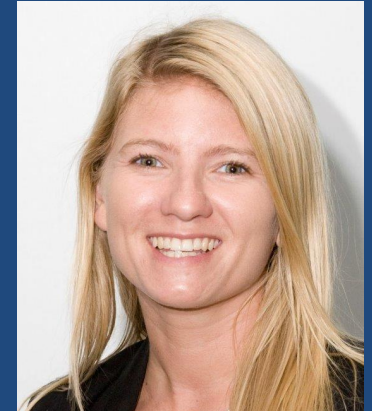
Chair of Governors
Alan Dunstan



Chair of Pastoral
and Community
Vicky Hamilton



Chair of Finance and
General Purposes
Alan Broomhead



Chair of Curriculum
and Standards
Kirsty Rogers

The Transition Programme

Date and time	Event
Early June	Primary School visits
24th May 9.30-11.30am, 6th and 13th June 6-8pm	Parents' Transition Events
28th June 9.30-12.30pm	New Beginnings Group
29th June 9.30-10.30am	Singles Event
4th July	Taster Day
13th July 11-midday	New Parents Coffee Morning
17th July 6pm	Welcome Evening



'Students are invariably polite, courteous and friendly, offering help and assistance to visitors and other students'. - Ofsted

On-going Mentor meetings throughout Year 7

A 'Very High Achieving' School

- **Eleven** national awards in recent years for High Achievement
- **84%** Achieved 5 or more GCSEs at Grade 4 and above including English and maths
- **91%** of all grades 9-4
- **36%** of all grades 9-7
- **0.7** Progress 8*
- **34%** of students achieving the EBacc at grade 5



'SCHOOL TOPS THE LEAGUE TABLES WITH MOST IMPROVED PUPILS'

- *The Henley Standard*

Our Senior Student Leaders:

Sporting Success



Extra-Curricular Sport at Langtree is a massive part of what we do. We have had both local and regional success in a range of sports, from softball, to football, to triathlon and cross country as well as many others. Students get the opportunities to participate and compete in a wide range of sports, both in lesson and for extra-curricular. Our Sports Ambassador programme helps the PE staff to run an increased number of sports.



Performing Arts Status

- Enrichment Week
- Creativity Days
- Creativity across the curriculum
- Additional, specialist staff and Creative Partners
- The hugely diverse after school activities



'Students' spiritual development is evident in their appreciation of the arts and in their growth in self-confidence' - Ofsted

School Productions





Creativity

‘Opportunities to develop workplace skills, such as leadership and management and teamwork, are supported most effectively by a plethora of extra-curricular opportunities’ – Ofsted



The 'Outdoor Classroom'

- Residential visits each year
- Annual ski trip
- Foreign Exchanges
- Numerous day trips
- Surfing weekend
- Frequent opportunities to learn off-site
- Creativity Days
- Activities Week



'I think you are all saints for providing such wonderful memories for all our kids!' – a grateful parent!



‘Students speak particularly highly of the extra-curricular opportunities. One student said that students found that there just wasn’t enough time in the week to take part in all of the activities they wanted to!’ - Ofsted

Year 8 students sampling oysters in Cancale, Normandy

Year 7 Annual Summer Camp

‘Students have confidence in the staff and report that they feel safe and happy in school’ – Ofsted



How well do you know your new friends?

‘Students flourish in a supportively challenging climate that encourages them to give of their best academically and personally’ – Ofsted



School Ski Trip to Italy

Life After Langtree

A full programme of careers advice and information throughout their time at Langtree.

Students progress to post 16 qualifications at a variety of local schools, colleges and apprenticeship providers.

A number of our students go on to university - a high proportion gaining places at Russell Group institutions.

This year eight of our alumni gained places at Oxbridge.

Langtree Challenge Leadership Course Peer Mentors
Open Forums School Council Duke of Edinburgh Award



Langtree School Student Leaders



The Langtree Code of Conduct

Be prepared for learning. *This means always have your books and the correct equipment for the lesson – and be on time!*

Be prepared to make an effort. *This means stay on task, keep your focus and maintain your concentration*

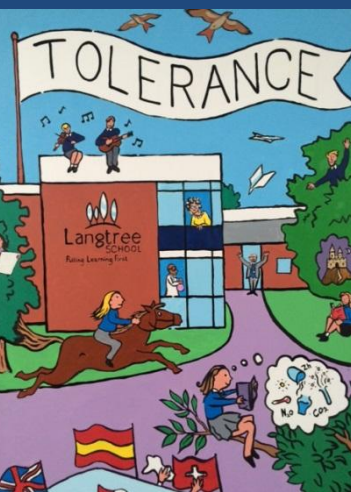
Be respectful of ALL staff. *This means don't answer back, challenge or argue with any member of staff about expectations*

Be respectful of other learners. *This means avoid shouting out or making unnecessary noise and waiting for your turn to have your say*

Be tolerant of other learners. *This means be prepared to listen to the views of others with consideration, even when you hold a different view*

Be proud of yourself and your work. *This means make the very best effort you can, make a positive contribution, and produce work which you can be proud of*

Be responsible for your learning outside the lesson. *This means handing completed homework in on time and using SMH to catch up yourself if you are absent*



Is this for me / my child?

‘Putting Learning First’

- A real desire to **put learning first** at school and at home
- An **ambition** to achieve your personal best
- A commitment to our values of **courtesy, tolerance and respect**
- A commitment to behave well so that others can **learn** and that teachers can **teach**
- A desire to show **pride** in your work, yourself and your school

‘Once again, we feel very privileged that our daughter is part of such a wonderful school community. Langtree is brilliant, thank you!’

Admissions Criteria

Langtree School Admission - Over-Subscription Criteria

In accordance with legal requirements, children who have a Statement of Special Educational Needs or an Education, Health & Care Plan naming the school will always be admitted.

If Langtree School is oversubscribed (there are more applications than places available) the following rules will be applied in descending order of priority

1. Children who are “looked after” by a Local Authority
2. Disabled children on grounds of physical accessibility
3. Children of staff
4. Children living in the designated area of the school with a brother or sister on roll at the time of application who will still be attending at the time of entry
5. Children living in the designated area of the school. If there are more applicants than places, priority will be given to those children who live closest to the school
6. Children living outside the designated (catchment) area who will have a brother or sister on roll
7. Children who attend one of our main feeder primary schools
8. Those children who live closest to the school

OCC Advice about Applying

Apply on time, ie no later than 31 October 2022.

If your application is late, it will be processed later in the year, and you are far less likely to get a place at one of your preferred schools.

You can list three different schools in order of preference.

OCC advise you to enter your catchment (or designated area) school as one of your preferences.

Parents' guide

- [Moving on \(pdf format\)](#)

Admissions information

For all enquiries regarding admissions, please
contact:

Debbie Hayward at Langtree on **01491 683364**

dhayward@langtreeschool.com

or

Mrs Amanda Cooper at Oxfordshire County

Council on **07775 407516**

Amanda.Cooper@Oxfordshire.gov.uk

admissions.childrensservices@Oxfordshire.gov.uk

www.oxfordshire.gov.uk/admissions

A prospective parent's view

“Having spent the evening with you all, and met the energised, passionate (and funny!) teachers, and the engaged, confident, happy pupils, we all came away even more convinced that this is the right thing for our family.

It is so clear you are creating a dynamic, creative and focussed space for children to flourish.”

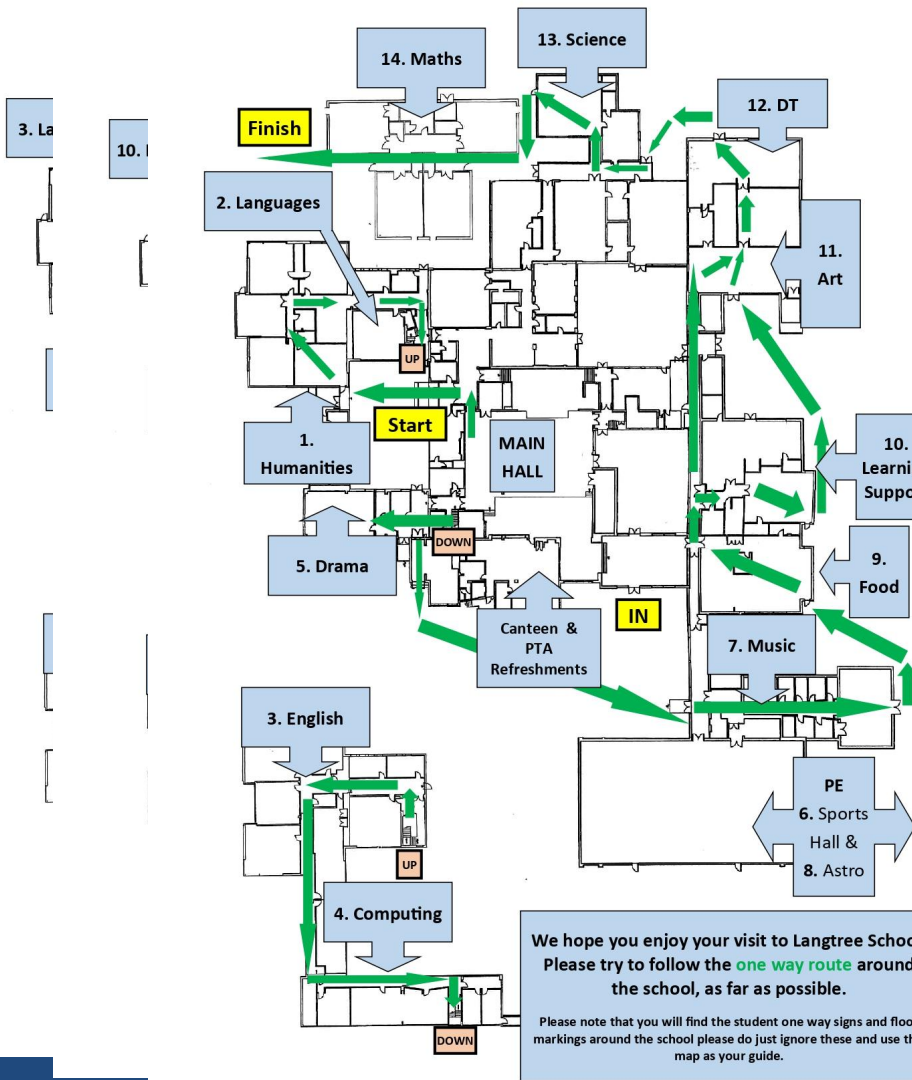
“The school has been a wonderful nurturing foundation for all three of my children and I am so grateful to all the teachers and staff who routinely go the extra mile to ensure students do thrive.”

‘My son knows that the reason he goes to school at Langtree was because of a forensic creativity day I ran a back in March 2019 at the school. He knows how impressed I was and consequently put our house on the market 2 weeks later to get him into the catchment. We have both been very happy with our experiences since he has started and we both feel very lucky to be at Langtree.’

What next?

- Have a good look around the [virtual open evening page](#)
 - New video
 - School map and virtual tours
 - Videos from each department
- Attend Open Mornings at Langtree
- Attend Open Evenings of other schools
- Ask questions - email office@langtreeschool.com
- Complete and return the standard application form by **31st October 2022**.
- On-Time application offers **1st March 2023**.

Suggested Routes



We hope you enjoy your visit to Langtree School. Please try to follow the **one way route** around the school, as far as possible.

Please note that you will find the student one way signs and floor markings around the school please do just ignore these and use this map as your guide.

Green Route
 Starting in
 Humanities
 Out front left
 Led by me