



What do these symbols stand for?

Can you name the colours?

Who do you need to contact if you want to get involved?

When and where is the meeting?

DEVELOP INITIATIVE AND SPIRIT OF ADVENTURE

JULY 14TH 2025
YEAR 8 PRESENTATION

In 2023/24, 155,502 young people
achieved a Duke of Edinburgh's
Award (DofE),

You will be part of an Internationally recognised organisation.

ONE OF 67 MILLION PARTICIPANTS, ONE OF
350,00 IN GLOUCESTERSHIRE

In the UK, during the 2024-2025 period (which includes the start of 2025),

235,045 young people started their Bronze Duke of Edinburgh's Award

CONGRATULATIONS

BRONZE

AWARD

70 yr 9 students
nearly completed





In 1956 AGO HE
CREATED A
DO-IT-YOURSELF-
GROWING UP KIT

PRINCE EDWARD, DUKE OF EDINBURGH, IS NOW THE PATRON



HOW IT IS DONE?

MRS PORTER

DofE

Mrs Porter dofe@rednockschool.org.uk
Or andrea.porter@rednockschool.org.uk





Lots of
information
on the
website!

HOW LONG WILL IT TAKE?



It will 6 months,

Training and practice expedition details are:

In school training day
17th April

Practice Expedition:
Conygres
2nd 3rd May
Final Expedition: Forest
of Dean
In June- not Belgium
weekend!

BRONZE AWARD

- There is a **massive choice** of activities that count towards a DofE programme
- Activities could be something that you are already doing or completely new
- All activities **must be outside of normal school curriculum**. Lunch and after school clubs and activities are fine
- The activity should be done for **approximately an hour a week**
- **Participants need to have an assessor** for each section of the award who has expertise or knowledge in the activity, but **cannot be a relative**



BRONZE

Volunteering **3** months

Physical **3** months

Skills **3** months

Expedition **2** days **1** night



PLUS a further 3 months in the Volunteering, Physical or Skills section.

PHYSICAL SECTION IDEAS

For more ideas for your physical, please visit
www.dofe.org/physical-section

- 1 Street dancing
- 2 Swimming
- 3 Weightlifting
- 4 Tae Kwon Do

VOLUNTEERING SECTION IDEAS

For more ideas for your volunteering, please visit
<http://www.dofe.org/volunteering-section>

- 1 Helping people in need
- 2 Fundraising
- 3 Sports leadership
- 4 Litter picking

SKILLS SECTION IDEAS

For more ideas for your skills
please visit www.dofe.org/skills-section

- 1 Money management
- 2 Graphic design
- 3 Event planning
- 4 Photography

WHAT WILL I NEED TO DO?

They will need to be
assessed.

NOT family or a
close relative!

It can all happen on
the app!

VOLUNTEERING

Volunteering is simple. It's about choosing to give time to something useful, without getting paid.

- **Helping people**
- **Community action and raising awareness**
- **Coaching, teaching and leadership**
- **Working with the environment or animals**
- **Helping a charity or community organisation**



PHYSICAL

Get Active! Anything that requires a sustained level of physical energy by taking part in a sport activity.

- Team Sports
- Individual Sports
- Water Sports
- Racquet Sports
- Dance
- Fitness
- Extreme Sports
- Martial Arts



SKILLS

To develop practical and social skills and personal interests by developing a new skill or improving an existing one.

- Creative Arts
- Performance Arts
- Science & Technology
- Music
- Life Skills
- Learning & Collecting
- Media & Communications
- Games and Sports
Appreciation



WHY DO IT?

Previous participants

YOUR FUTURE

In a tough economic climate, it's even more important to make your CV stand out from the crowd.

Skills participants said they gained through their DofE...



Team working: 91%

Communication: 75%

Problem solving: 59%

Self-management: 55%

Positive approach to work: 55%



The Volunteering section came out top in helping participants prepare for the working world.

The activities undertaken on a Duke of Edinburgh's Award programme are proven to help boost university applications and CVs.

10 Reasons to Choose DofE

1. Challenge yourself
2. Get Fit
3. Give something back
4. Self-discipline
5. Make new friends
6. Enhance your CV
7. Independence
8. Teamwork
9. Explore somewhere new
10. Achievement

OPPORTUNITY



The Duke of Edinburgh's Award
TAKE THE CHALLENGE

You've got the chance to do a DofE Award, why wouldn't you? Go for it!!

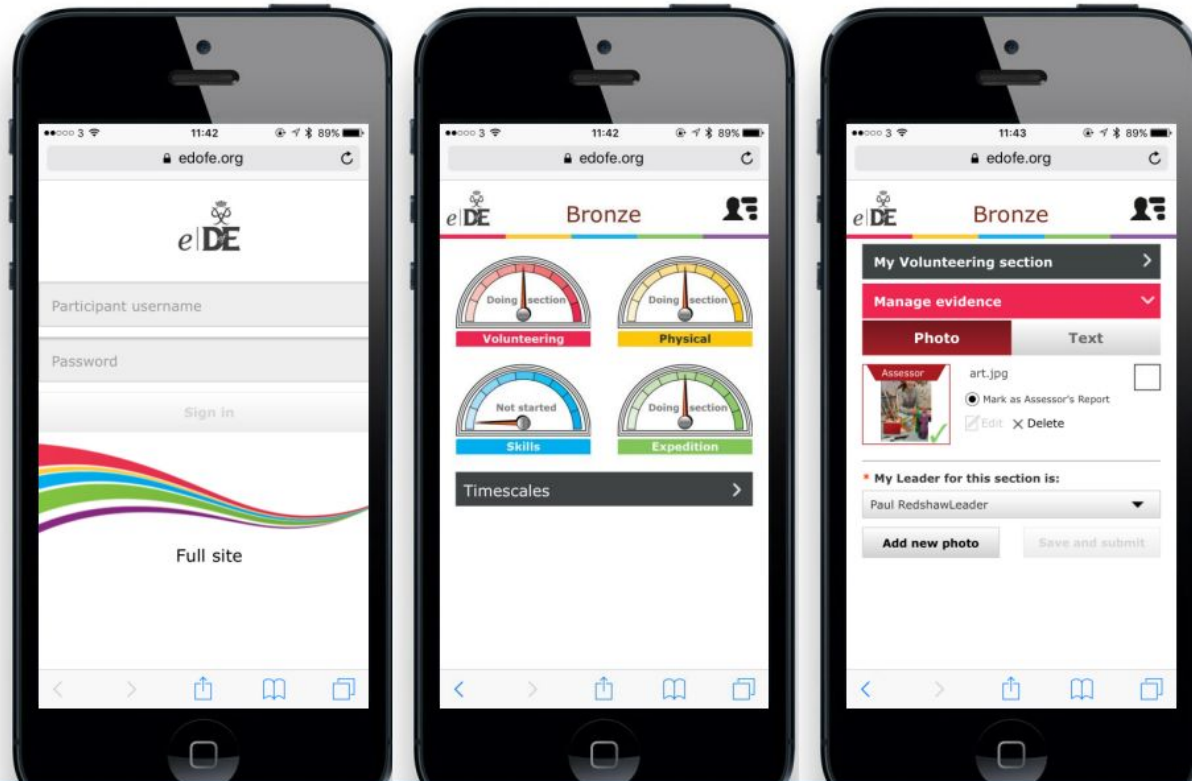
WHAT DOES IT LOOK LIKE?

It's all on the app!

eDofE mobile site

Participants can also use the **eDofE** mobile site

<https://m.edofe.org/>

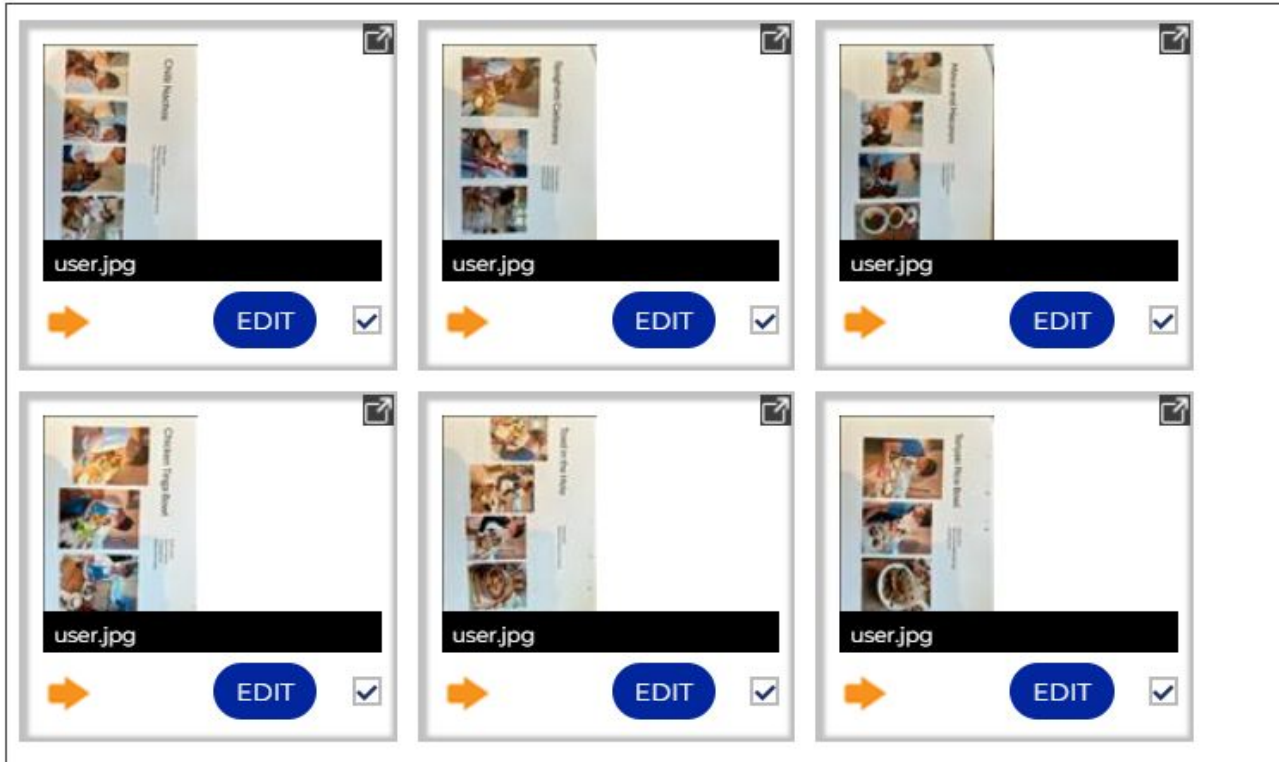


What is eDofE?

eDofE is the online account participants use to record their DofE Award

The screenshot shows the 'My Bronze DofE programme' page for a user named Matthew Burdis. The page is divided into several sections:

- Header:** Includes the eDofE logo, the title 'My Bronze DofE programme', and social media icons for Facebook, Twitter, and YouTube.
- Navigation:** A menu bar with 'Home', 'LifeZone', 'DofE.org', 'Shop', and 'Sign out'.
- Breadcrumbs:** 'You are here > My Bronze DofE > Physical'.
- User Profile:** Shows the user's name (Matthew Burdis), ID No: 883448, and enrolment date (21/02/2014). There is a 'View/edit my profile' link.
- Left Sidebar:** A navigation menu with categories: DofE Information, My Bronze DofE (with sub-items: Volunteering, Physical, Add evidence, View evidence), Skills, Expedition, Resources, Keep Safe, My Settings, and Help. At the bottom is a 'CEOP REPORT' logo.
- My Physical section:** Contains a progress gauge labeled 'Physical' with a needle pointing to 'Not started'. Below it are form fields for:
 - Status: Not started
 - Timescale: 3 Months
 - * Start date: 17/04/2014
 - Earliest completion date:
 - * Type/category of activity: Team sports (selected from a dropdown)
 - * Detailed activity chosen: Rugby Football Union
 - * Where are you going to do it?: St Mary's School, Thur[...]
 - * What are your goals? What do you want to achieve?
- Communications:** Includes a 'Messages: 1 (1)' section with links for 'News' and 'Contacts'. Below are promotional banners for 'The LifeZone' (support for careers, study & life decisions), 'DofE Shopping' (DofE clothing, essential Leader resources, kit list & deals), and 'Expedition kit' (official DofE Expedition Kit List and expert kit advice).



What might evidence look like!

WHERE CAN YOU FIND THE INFORMATION?

1) LETTERS AND INFORMATION ON THE REDNOCK WEBSITE UNDER;

PARENTS

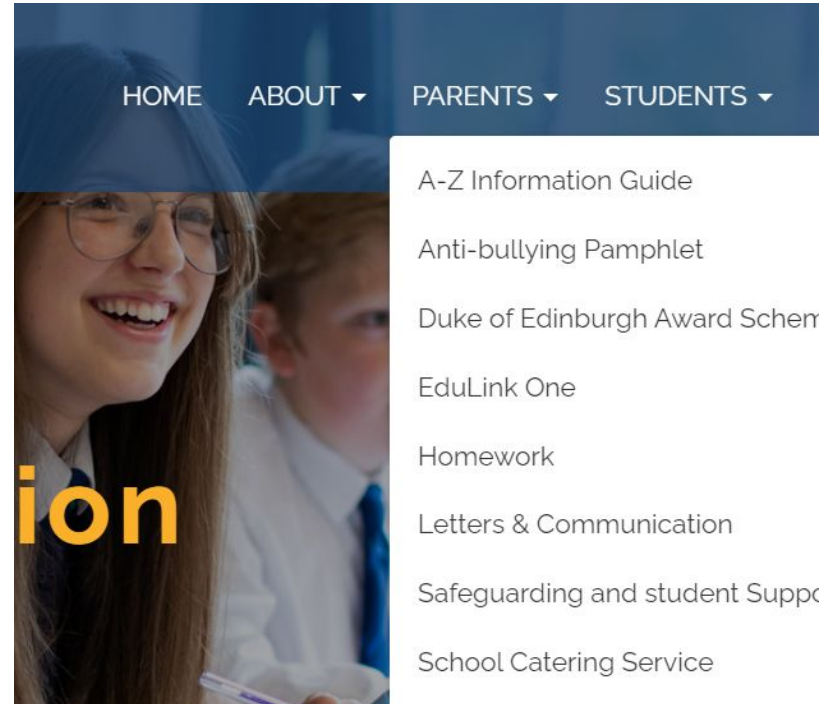
- DofE
- Letters and forms

2) Monthly updates in Rednock Review Newsletters

3) Also communication with students will be via **Google Classroom**.

4) Use you app and the DofE website

5) Email both you and your parents/carers





IN SCHOOL TRAINING: MAP READING, CAMP CRAFT, FIRST AID , MENU PLANNING AND WHAT TO PACK



AND HOW TO PACK
IT!



Practice and Final expedition on foot and you need to be self sufficient!



There will be lunchtime support sessions.

Camp craft and map reading!



CAMPING NOT
GLAMPING!



Camp cooking!



PINK WAS THE CHOICE OF '25: WHAT COLOUR 26!?



BRONZE WAS ON FOOT!



WHO ARE WE DOING IT WITH?

PIONEER LEADERSHIP

THEIR COST IS £194

ADDITIONAL COST OF £50 FOR DofE Membership
and a Tshirt



Duke of Edinburgh's Award – Expedition



Expedition Programme Overview

Rednock School

Spring/Summer 24



fsb⁰³
MEMBER





Our Mission,

To become the provider of first choice for schools and colleges, in the delivery of enrichment activities to support student leadership development and character education, through a programme of activities, both on and off-site, influenced by the outdoor environment

hello@pioneer-leadership.co.uk



**Student
Team
Building**



**Student
Leadership
Workshops**



**Youth
Adventure
Experience**



**Duke of
Edinburgh's
Award
Expeditions**



**Staff
Team
Development**

hello@pioneer-leadership.co.uk

Our Team



Heather



Ruth



Nick



What is the Duke of Edinburgh's Award?



A life changing experience. A tool to develop essential skills for life and work. A recognised mark of achievement; respected by employers, the Duke of Edinburgh's Award is a leading, internationally recognised, youth achievement award.



As an Approved Activity Provider (AAP), for the Expedition Section, we have been licensed by The Award to work with Schools and organisations to facilitate safe, high quality expeditions, in line with the ethos of the Duke of Edinburgh's Award.

Our support can be as light touch as providing qualified and experienced staff to support in-house provision, right through to full section management, covering training, practice and assessed expeditions, and the provision of group equipment.

hello@pioneer-leadership.co.uk

The Bronze Duke of Edinburgh's Award



Bronze
Award



Physical



Volunteering



Skills



Assessed Expedition
(2 Days/ 1 Night)*



Pioneer Leadership Ltd.

PA 103 – Technology Centre
University of Wolverhampton Science Park
Glaisher Drive
WV10 9RU



fsb⁰⁸
MEMBER



e_ hello@pioneer-leadership.co.uk
web www.pioneer-leadership.co.uk

Key Dates

Expedition Overview Briefing

In- School Training Day

17th April

Practice Expedition

MAY 2ND AND 3RD

Assessed Expedition

JUNE 27th AND 28th

Expedition Onboarding

Secure page
on our website

Consent Form

Before we can commence training, each participant needs to have a consent form completed by a parent or guardian.

This can be found by following the link below. Our forms are hosted on Google Forms and they allow us to maintain an accurate record of participants throughout the expedition activity.

If you don't yet know your eDofE Number, please just enter 0.



[Participant Consent Form \(This will direct you to a Google form\)](#)

Suggested Kit List

This is based on the DofE Recommended Kit List and the experience of our instructor team. Please don't feel under pressure to go on a large shopping spree ahead of the expedition. Our instructors will talk through equipment on the training days, and we will share some top tips for being able to complete the expedition without breaking the bank.



[Pioneer Leadership Ltd - Suggested Expedition Kit List](#)

What to Expect

What we will be doing at
each stage...

In School Training Day

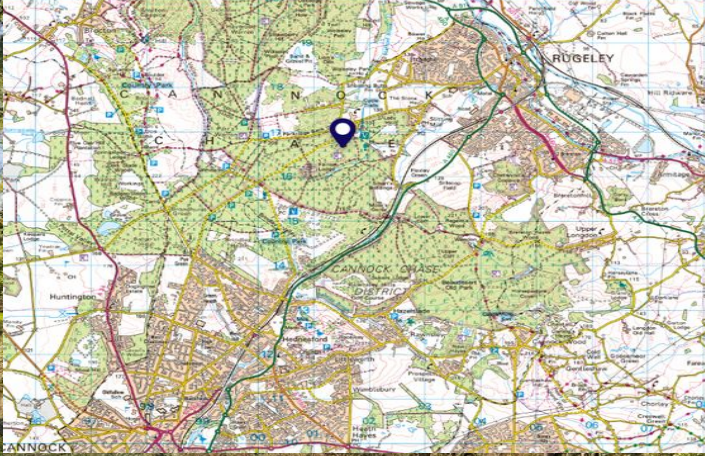
EXPEDITION AIM & REQUIREMENTS



Practice Expedition



Assessed Expedition



Some Considerations...

- Consent Forms...
- Additional needs...
- Expedition teams must be no smaller than 4 and no larger than 7 participants...
- Attendance does not guarantee a pass...

Any questions?



WHAT HAPPENS NEXT?

Letter home to parents and a parent's presentation evening meeting at school

In the letter it lists the dates:

BRONZE
TRAINING DAY APRIL 17TH
MAY 2ND AND 3RD
JUNE 27th 28th

Cost is to cover training, practice for and the Expedition itself, along with the equipment and supervision by Assessors, insurance etc.

Also a day in school for training and route planning.

Training involves map reading, campcraft and first aid.

If funding is an issue, please see Mrs Porter as we want all to have the opportunity of this award.

So what do you now need to do?

Reflect on what skills, physical challenges and volunteering your child might like to do or are already doing.

Reflect on who might be an assessor

Check out the DofE website.

WHAT HAPPENS NEXT:

Sign up on the Google form which will trigger Parent Pay.
After the initial deposit- they will be signed up and they will be given an ID number .

A pack will arrive in the post along with a DofE card which offers a host of discounts

(Millets/Blacks/Go Outdoors/Go Ape/ Parkdean Holidays etc)

There will be a lunchtime enrollment session and follow up support meeting.
There may be some after school training as well, prior to the Expedition and a Parents meeting about what kit will be needed.

I can back date enrollment by 2 months so they can start it this summer holiday!

Parental Role

- **Guidance**
- **Encouragement**
- **Expedition support**
- **Reminders**
- **Recognise their achievements**



DofE helps you to stand out!





What do these symbols stand for?

Can you name the colours?

Who do you need to contact if you want to get involved?

When and where is the meeting?

email:dofe@rednockschool.org.uk