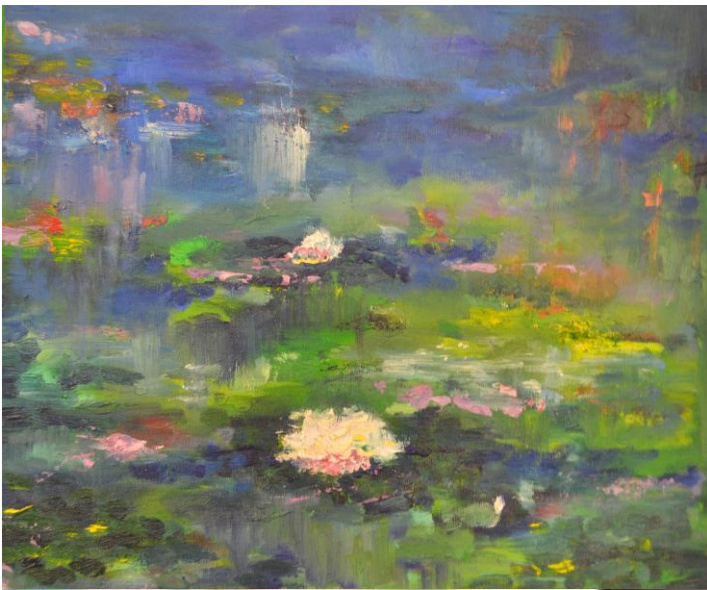


Rednock School
A Level
FINE ART



Transition Pack

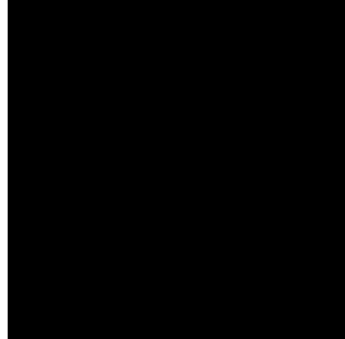
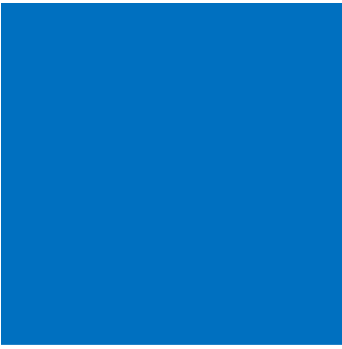
Course Guide and Summer Work

Exam Board: AQA

Course Title: Fine Course Code: 7202 www.aqa.org.uk

Please record your work in a sketchbook or on loose sheets and bring to your first lesson in September.





+

Introduction

Skills you will need to develop

A Level
Components

Component 1: 60%

Personal
Investigation

Component 2: 40%

Exam Set

A - Level Fine Art provides students with opportunities to develop personal responses to ideas, observations, experiences, environments and cultures through practical, critical and contextual forms within Art.

Students will be introduced to a variety of experiences that explore a range of practical media, techniques and processes, including drawing, painting, printmaking, sculpture and photography. They will be made aware of both traditional and new technologies. Students will explore relevant images, artefacts and resources relating to a range of art, craft and design, from the past and from recent times, including European and non-European examples. This will be integral to the

investigating and making processes. Students' responses to these examples must be shown through practical and critical activities that demonstrate their understanding of different styles, genres and traditions. Students can use sketchbooks, workbooks or journals to underpin their work where appropriate, though their outcomes can take the form of any media on any scale. Students may use traditional methods and/or digital techniques to produce images as part of this course. Students should be aware of the four assessment objectives to be demonstrated in the context of the content and skills presented and of the importance of process as well as product.

+ Recommended reading, research and preparation

As part of your summer work it is advisable to undertake a range of research. First hand study and experience is essential. We recommend a range of gallery visits so that you can see the work of professionals.

Suggested Galleries:

National Portrait Gallery

Tate Modern Gallery

Tate Britain Gallery

Tate St Ives/Liverpool

Cardiff Art Galley

Bristol Museum & Art Gallery

Also keep a look out for other local exhibitions in Bristol, Cheltenham, Bath and Gloucester.

Secondary Research:

[www:studentartguide.com](http://www.studentartguide.com)

[www:art2day.co.uk](http://www.art2day.co.uk)

Also look at online collections. Try to research a range of artistic styles including the following:

- Portraiture
- Landscape
- Still Life
- Human Form
- Wildlife
- Architecture
- Film and Photography
- Digital Manipulation

Tutorials and Online Workshops

To develop your skills there are also wealth of tutorials on how to improve your art whatever the theme or media online.





To start art, we would like you to undertake 3 tasks to prepare you for your new course. This is important and will be assessed at the beginning of September to decide on your suitability for the course.

TASK 1:

Strong drawing skills are vital in this subject as is the abilities to observe and create.

Collect a range of objects which can be displayed in a box like the Joseph Cornell boxes you see above. They may be man-made or natural forms, pictures, photos etc. Produce 2 drawings of your collection box, one should be a drawing of the whole thing, one could be an enlarged section. Use pencil for one drawing and then a media of your choice for the 2nd one. Pencil crayon, paint, collage etc. Present your drawings in a sketchbook with photos of your collection box. your choice for the 2nd one. Pencil crayon, paint, collage etc. Present your drawings in a sketchbook with photos of your collection box.



+ Week 2

Task 2 & 3: Research for an Exhibition

TASK 2:

Visual awareness is a vital part of the course and essential to any creative student. In A Level Fine Art you will need to have a broad evidence of inspiration and stimuli. For this task 2, create a 'Pinterest' account and start collecting images of artwork that you like. Try to find at least 10 different artists. Add these images to your Google Classroom Sketchbook and add a commentary explaining why you like each piece of work.

TASK 3: Exhibition Preparation

Critical Study, the knowledge of other art, artists and designers is another essential part of this course.

For task 3, you are to research the work of one of the artists that you have found on Pinterest. Produce a short written, illustrated piece of

work, (no more than 200 words) in which you cover the following areas.

- Brief biographical facts.
- Explain why you have chosen this artist and their work.
- An analysis of one particular piece of work by the artist in your own words.
- Explain how they or the piece of work inspires you. How could you use this work as a starting point to produce work for the exhibition?

You may hand write or type you work. It should include at least the image that you have reproduced yourself. This might be a pencil sketch, or in other media that you have access to at home.

Required Knowledge and skills

Through your GCSE in Art you will have acquired a range of skills which the A Level course builds on.

A good standard of literacy and competence in ICT is essential.

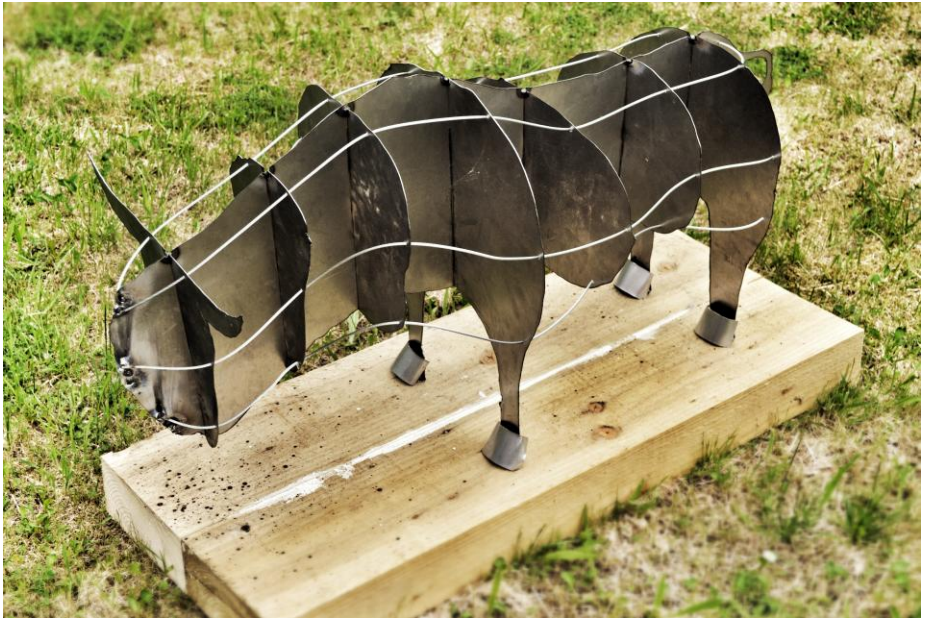
This course suits strong, self-motivated, independent students.

Access to some of your own resources is preferential.

Year 12 Review

The assessment will comprise of:

- a review of summer work
- assessment of the preliminary practical tasks that you will produce in the first 2 weeks.



+

A LEVEL

Fine Art



+

Glossary of Terms
A support to critique

There are many words that can help you be descriptive when it comes to critiquing art. In fact, there are words to comment on every single aspect of art and photography. The line, tone, movement, texture and shape are just a few ways in which art can be critiqued. However, the following list will go into more depth of the words that you can use to critique art.

Six Words to Critique Line:

In art a line can be described in several things. The words used to describe line in the form of art are everyday type of words, nothing fancy.

- Flowing
- Delicate
- Simple
- Bold
- Thick
- Thin

Four Words to Critique Tone:

When it comes to tone in art there are four words that can help you when critiquing. None of the words are fancy; however they may not all be use in your everyday conversations with friends.

- Subtle
- Contrasting
- Muted
- Dramatic

Five Words to Critique Texture:

Texture is a very common element with and often used when referring to clothing, furniture and hair. Also, if you have ever painted a wall in your home you are most likely familiar with the following words.

- Rough
- Fine
- Smooth
- Coarse
- Uneven

Five Words to Critique Shape:

Art comes in various shapes whether it is a painting or a sculpture. Therefore, there are specific words to describe each piece of art.

- Organic
- Curvaceous
- Geometric
- Angular
- Elongated

Three Words to Critique Movement:

Movement is seen in every piece of art. Movement helps to create or define a piece of art.

- Swirling
- Flowing
- Dramatic

Five Words to Critique Scale: Scale is basically the size of the art. The words used to critique scale are common words that are already in our vocabulary.

- Large
- Small
- Intimate
- Miniature
- Monumental

Three Words to Critique Contrast:

Two out of the three words for contrast have already been used to critique other elements of art. Therefore, it should not be hard to remember these words on a list of descriptive words to critique art. The only other word you need to remember here is the word strong and that is a pretty common word.

- Dramatic
- Subtle
- Strong

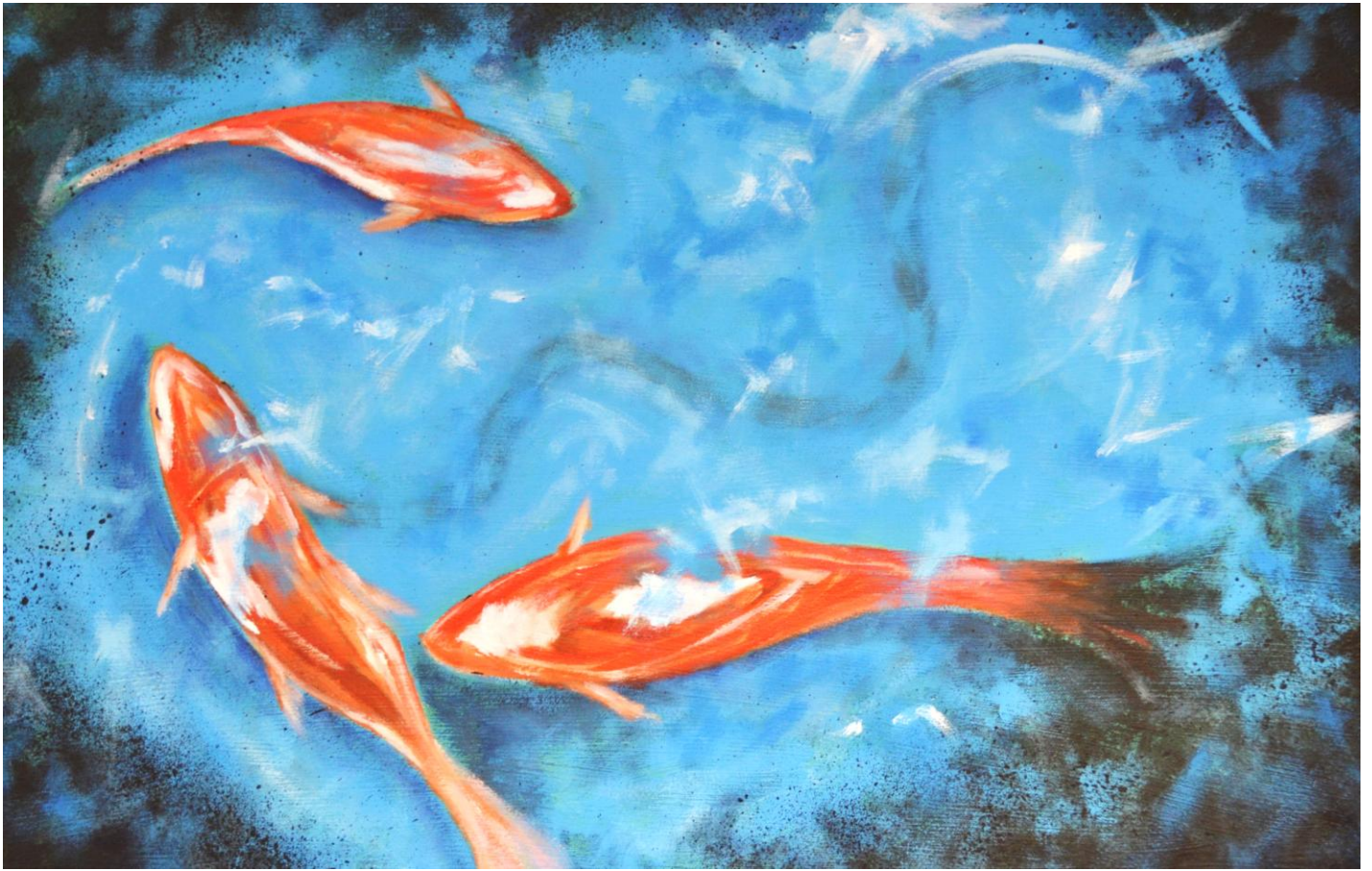
Six Words to Critique Colour:

In art color is very important. This is what helps each piece of art stand out. The color, no matter what type of artwork helps define the piece and the artist. A lot of artwork can be determined on who did the work just by looking at the colors, because certain artists use specific colours in every piece of their work.

- Bold
- Vibrant
- Subtle
- Pale
- Earthy
- Naturalistic

Further depth to Critique Art:

- Saturation- refers to the brightness of colour
- Geometric – refers to the shapes such as circles, triangles, squares, etc.
- Organic – free flowing or rounded
- Symmetry – meaning it is equal on both sides
- Asymmetrical – unequal proportioned elements
- Flat tones – no tonal effect in the colour
- Negative space – the space around the actual form of art
- Depth – the illusion of space
- Broken colour – dabs or small amounts of colour
- Focal point – the spot that stands out in the artwork
- Distorted – a shape that is changed and no longer looks proportioned



+

A Level

FINE ART

Head of Domain for Art, Media and Photography: Mr A Wallis