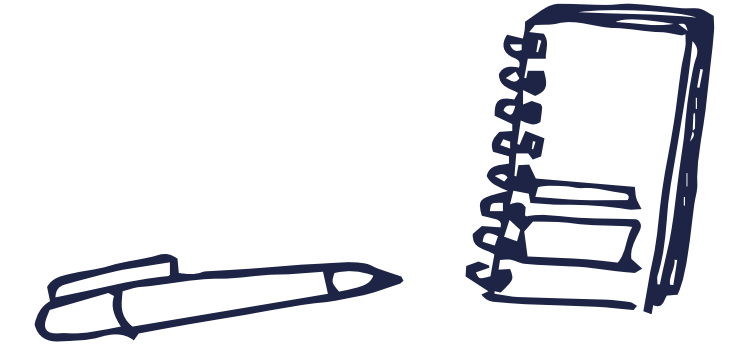




ENGLISH



YEAR 7			HEROES AND VILLAINS		DYSTOPIA		THE WORLD AROUND US	
Greek myths and legends	Shakespearean heroes and villains	Fairytales	'The Hunger Games' by Suzanne Collins		Nature poetry	Non-fiction environmental writing		
<ul style="list-style-type: none"> Character archetypes Subversion of heroes and villains over time 			<ul style="list-style-type: none"> How writers use genre archetypes and conventions Descriptive writing skills 		<ul style="list-style-type: none"> Different poetic forms and methods How writers craft perspective and viewpoint Shaping non-fiction texts 			

INTRODUCTION TO SHAKESPEARE		DETECTIVE FICTION		CONTROVERSIAL ISSUES		TRAVEL WRITING	
Shakespeare play		Sherlock Holmes stories by Sir Arthur Conan Doyle		Human rights poetry	'The Bone Sparrow' by Zana Fraillon		Travel extracts
<ul style="list-style-type: none"> Themes, characters and setting within a Shakespeare play Influence of context on text 		<ul style="list-style-type: none"> How writers use genre conventions How writers structure the text to impact the reader 		<ul style="list-style-type: none"> Human rights in literature Crafting powerful opinions 		<ul style="list-style-type: none"> How writers persuade the reader Comparative skills 	

YEAR 9			GOTHIC LITERATURE		RHETORIC		NOVEL FROM A DIFFERENT CULTURE		NARRATIVE WRITING		CONFLICT	
A range of literary extracts			A range of persuasive extracts		'Of Mice and Men' by John Steinbeck		Creative writing		War poetry		Shakespeare play	
<ul style="list-style-type: none"> How writers use genre conventions How to evaluate 			<ul style="list-style-type: none"> How writers use persuasive techniques to convey a viewpoint How to apply persuasive techniques 		<ul style="list-style-type: none"> Themes, characters, setting and context How the writer structures the text to impact the reader 		<ul style="list-style-type: none"> How to apply structural methods How to craft setting and characters 		<ul style="list-style-type: none"> Consideration of content Different poetic forms and methods Comparative skills 		<ul style="list-style-type: none"> Themes, characters and setting within a Shakespeare play Presentation of conflict 	

ENGLISH LANGUAGE AND ENGLISH LITERATURE							
LITERATURE PAPER 2	LITERATURE PAPER 2	LITERATURE PAPER 1	LITERATURE PAPER 1	LANGUAGE PAPER 2	LITERATURE PAPER 2	LANGUAGE PAPER 1	LITERATURE PAPER 2
<ul style="list-style-type: none"> Unseen poetry How to interpret and analyse in an exam Summary and comparison skills 	<ul style="list-style-type: none"> Poetry anthology Different poetic forms and methods Social and historical context Comparative skills 	<ul style="list-style-type: none"> 19th century novel Characters, themes, setting Social and historical context 	<ul style="list-style-type: none"> Shakespeare play Characters, themes, setting Social and historical context 	<ul style="list-style-type: none"> Approaching non-fiction texts Non-fiction writing skills 	<ul style="list-style-type: none"> Poetry anthology Different poetic forms and methods Social and historical context Comparative skills 	<ul style="list-style-type: none"> Approaching fiction texts Narrative writing skills 	<ul style="list-style-type: none"> Modern text Characters, themes, setting Social and historical context

A LEVEL		ENGLISH LITERATURE	
PAPER 1: LOVE THROUGH THE AGES		PAPER 2 (OPTION B): TEXTS IN SHARED CONTEXTS: MODERN TIMES	
<ul style="list-style-type: none"> Unseen prose: an introduction to the key concepts Comparison of 'A Streetcar Named Desire' and 'The Handmaid's Tale' 'Feminine Gospels' 		<ul style="list-style-type: none"> Unseen poetry: an introduction to the key concepts NEA: independent comparative study: 'Doctor Faustus' and a text chosen by the student Comparison of 'The Great Gatsby' and an anthology of pre-1900 poetry Shakespeare: 'Othello' 	
With each unit of study, students will learn to... <ul style="list-style-type: none"> Articulate responses to literary texts Analyse ways in which meanings are shaped Understand the significance and influence of the contexts Explore connections across literary texts Explore different interpretations 			

