



ART & DESIGN



YEAR 7

1. LINE AND TONE

- Mark-making
- Print-making
- Tonal drawing
- Skills



2. 3D FORM

- Clay relief and carving

3. COLOUR THEORY

- Primary
- Secondary
- Tertiary
- Tints and shades

4. PATTERN & SHAPE

- Print-making
- Composition
- Painting



5. PHOTOGRAPHY

- Composition
- Digital manipulation
- Thematic task



YEAR 9



12. 3D FORM

- Texture
- Artist study
- Clay
- Ideas sketches

11. COLOUR THEORY

- Primary
- Secondary
- Tertiary
- Tints and shades
- Colour mixing

10. LINE AND TONE

- Tonal drawing
- Print-making
- Typography

9. COLOUR AND SHAPE

- Painting
- Blending
- Impasto
- Still life photography

8. ANIMATION

- Stop motion
- Scenic backdrop

7. 3D FORM

- Clay modelling
- Sculpture
- Set design props

6. LINE AND TONE

- Tonal drawing
- Portraiture
- Character design
- Storyboarding

YEAR 8

13. PAINTING

- Artist study
- Ideas sketches

14. CONTEXTUAL STUDIES

- Artist research

15. PHOTOGRAPHY

- Composition
- Camera techniques
- Photoshoot

16. DEVELOPING IDEAS AND FINAL PIECE

- Mind mapping
- Composition



GCSE

AND/OR

A LEVEL

AND/OR

GCSE FINE ART

- Skill-building
- Presentation
- Contextual studies
- Developing and refining ideas
- Annotation
- Recording through photography and drawing
- Experimenting with media
- Producing a personal response

GCSE PHOTOGRAPHY

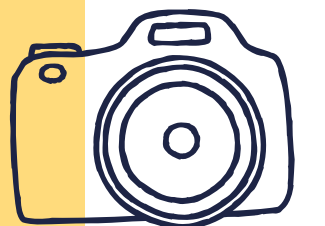
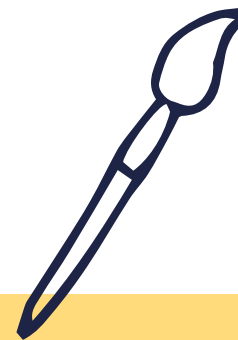
- Camera skills and techniques
- Presentation
- Contextual studies
- Developing and refining ideas
- Annotation
- Experimentation
- Digital manipulation
- Producing a personal response

A-LEVEL FINE ART

- Exploring themes
- Contextual studies
- Critical analysis
- Advanced skills and refinement

A-LEVEL PHOTOGRAPHY

- Exploring themes
- Contextual studies
- Refined post production
- Advanced compositions
- Critical analysis



Component 1 NEA 60%, Component 2 NEA 40%

Component 1 NEA 60%, Component 2 NEA 40%