



SOCIOLOGY

**A
LEVEL**



CLASS



1. INTRODUCTION TO SOCIOLOGY AND BRITISH POLITICS

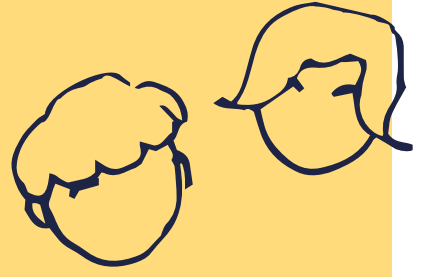
- What is sociology?
- How has sociology influenced political views?

2. THEORETICAL PERSPECTIVES IN SOCIOLOGY

- Functionalism
- Marxism
- Weberian
- Feminism
- New Right
- Postmodernism

3. SOCIALISATION, CULTURE AND IDENTITY

- Types of Culture:
 - Cultural diversity
 - Cultural hybridity
- Socialisation
- Agents of socialisation
- Social control
- Nature vs nurture
- Types of identity
- Hybrid identities



7. RESEARCH PROJECT

- Create a bespoke piece of research
- Research presentation

6. RESEARCH METHODS

- Positivism
- Interpretivism
- Research methods
- Mixed methods
- Research concepts



5. SOCIAL INEQUALITIES: CLASS & GENDER

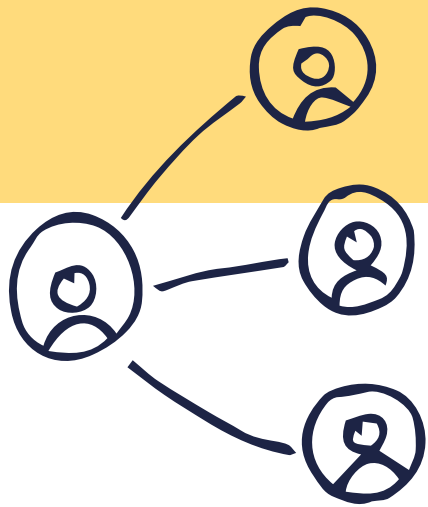
- Social class and gender inequality
- Class and gender inequality:
 - Patterns and trends
 - Impact on life chances and opportunities

4. FAMILY AND RELATIONSHIPS

- Types of Families
- Patterns and trends in the family
- Family diversity
- Role of the family debate

8. SOCIAL INEQUALITIES: ETHNICITY & AGE

- Ethnicity and age inequality:
 - Patterns and trends
 - Impact on life chances and opportunities



9. CRIME AND DEVIANCE

- Measures of crime and deviance
- Social distributions of offending behaviour and victimisation
- Patterns and trends in global crime
- Theoretical views of crime
- Social policies and crime

10. GLOBALISATION

- Definitions of globalisation
- Digital forms of communication
- Applying sociological theories
- Impact of digital communication on:
 - Identity
 - Social inequality
 - Relationships
 - Culture

