



Key Stage 4 Information Evening



Mr Cheeseman - Assistant Headteacher & Outcomes and Attainment Lead

Mrs Melville-Brown - Head of English

Dr Cunningham - Deputy Headteacher & Maths Lead

Mr Griffiths - Head of Science

Mr Steele - Year 10 Raising Standards Lead



RSL - Raising Standards Lead

What is the role?

- Funded by Pupil Premium
- Strategies targeted at PP, when implemented successfully they help all
- Evidence based

Day to day

- Attendance has been a priority this year
- Options and interventions
- Equipment
- Working smarter



What are the components of KS4 success?

- Strong partnership between home and school
- Organisation and routines
- Excellent attendance
- Positive mindset
- Physical and mental wellbeing



Students:

- Get organised in terms of stationery, notes, access to resources and prioritisation
- Set up strong study habits (and stick to them!)
- Maintain excellent attendance

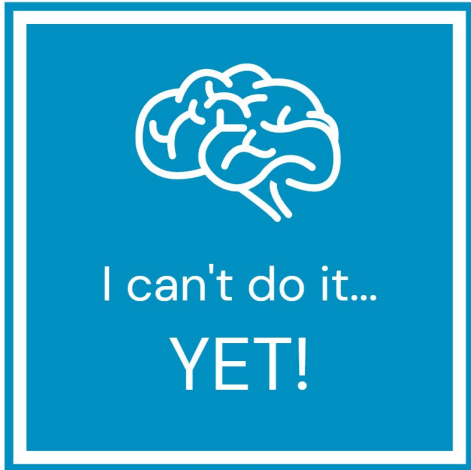
Parents:

- Assist with organisation in terms of stationery, notes and prioritisation
- Help to find study space free from distractions
- Encourage excellent attendance



Students:

Retain a 'can do' positive mindset and understand the importance of 'not yet'



Parents:

Offer praise and encouragement to reinforce a 'can do' positive mindset



Students:

- Look after yourself physically, mentally and emotionally.
- Speak to your parents, tutor and teachers if you need help with your studies or with managing your mood.
- Keep your end goals in mind, break these down into smaller goals.



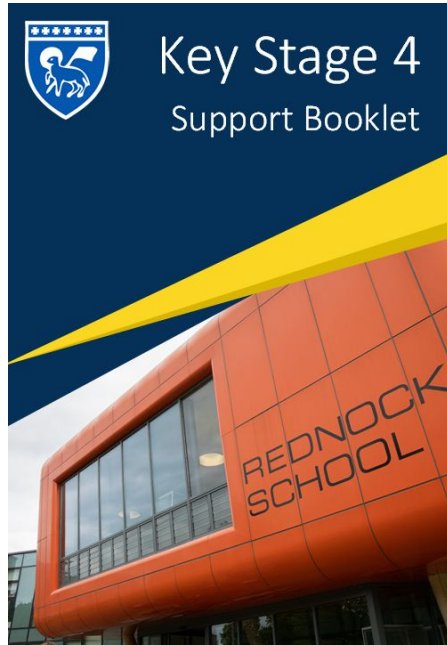
Parents:

- Maintain ongoing dialogue around physical, mental and emotional wellbeing.
- See N.H.S. advice on managing exam related stress. Speak to us, if you have concerns.
- Encourage to focus on end goals and retain a sense of perspective.

Wellbeing



Key Stage 4 Support Booklet



- Key components for Key Stage 4 Success
- Information on Homework and Revision
 - 60 mins per subject per week
 - Getting organised using SMHW
 - Revision techniques
- Signposting careers advice and guidance
- Subject specific details linked to revision tips, revision materials and useful websites



English



English Language

Paper 1: Explorations in Creative Reading and Writing

What's assessed

Section A: Reading

- one literature fiction text

Section B: Writing

- descriptive or narrative writing

Assessed

- written exam: 1 hour 45 minutes
- 80 marks
- 50% of GCSE

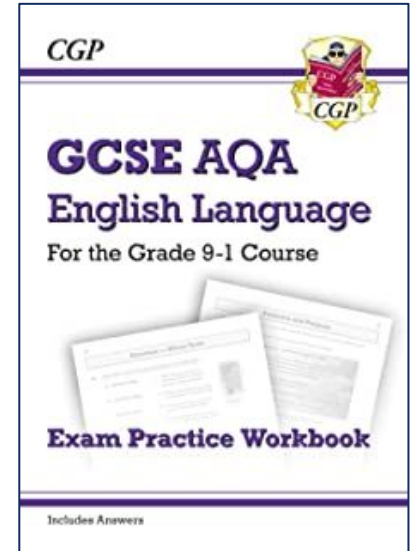
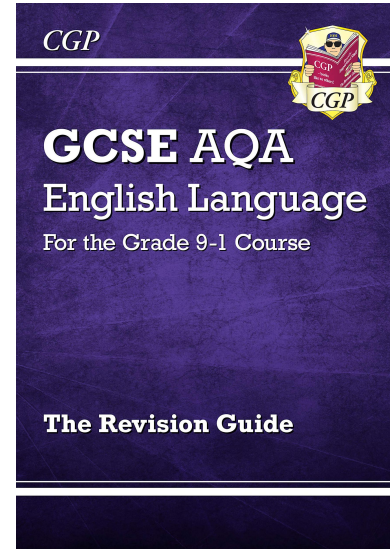
Questions

Reading (40 marks) (25%)– one single text

- 1 short form question (1 x 4 marks)
- 2 longer form questions (2 x 8 marks)
- 1 extended question (1 x 20 marks)

Writing (40 marks) (25%)

- 1 extended writing question (24 marks for content, 16 marks for technical accuracy)



English Language

Paper 2: Writers' Viewpoints and Perspectives

What's assessed

Section A: Reading

- one non-fiction text and one literary non-fiction text

Section B: Writing

- writing to present a viewpoint

Assessed

- written exam: 1 hour 45 minutes
- 80 marks
- 50% of GCSE

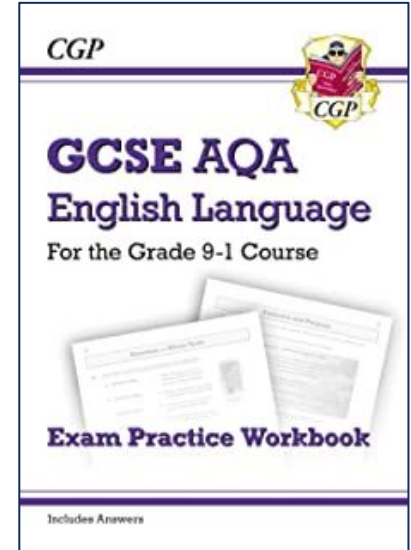
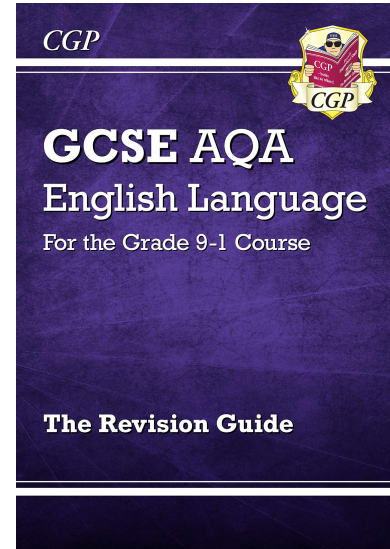
Questions

Reading (40 marks) (25%) – two linked texts

- 1 short form question (1 x 4 marks)
- 2 longer form questions (1 x 8, 1 x 12 marks)
- 1 extended question (1 x 16 marks)

Writing (40 marks) (25%)

- 1 extended writing question (24 marks for content, 16 marks for technical accuracy)



English Language

Non-examination Assessment: Spoken Language

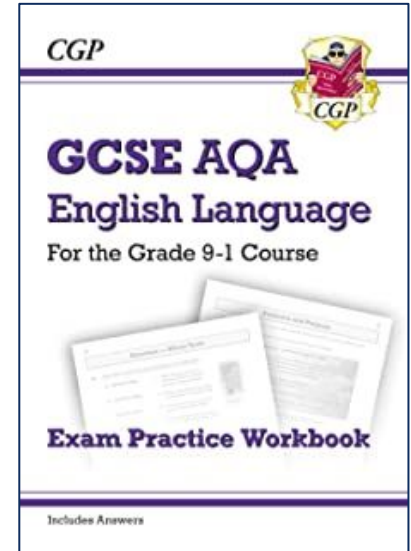
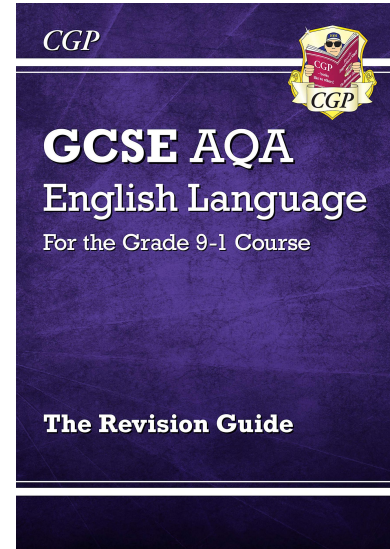
What's assessed

(AO7–AO9)

- presenting
- responding to questions and feedback
- use of Standard English

Assessed

- teacher set throughout course
- marked by teacher
- separate endorsement (0% weighting of GCSE)

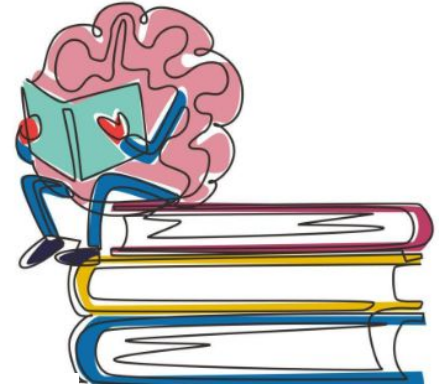


Wider Reading

Students will need to be confident readers of a range of high quality, challenging fiction, non fiction and literary non fiction, written during the 19th, 20th and 21st century. The more exposure they have to a wide range of challenging reading material, the better they will do.

Their wider reading could include;

- High quality journalism
- News websites (BBC, The Guardian, The Telegraph, The Times)
- Blogs
- Travel Writing
- Diaries
- Letters
- Autobiographical writing
- Biographical writing
- Fictional narratives



NEWS



Corbyn's power play: the five big ideas

Wednesday, 26 September 2018

Is he prime minister material? Today, Jeremy Corbyn will address the Labour Party conference in a pitch to be Britain's next leader. Here are five trump cards which could win over voters.

ECONOMICS POLITICS

PDF



Airchair assassins enter ethical minefield

Wednesday, 26 September 2018



You can search for topics of interest using the subjects tabs, or the search tool

Log in details are available in the LRC



English Literature

Paper 1: Shakespeare and the 19th-century novel

What's assessed

- [Shakespeare plays](#) (page 11)
- [The 19th-century novel](#) (page 11)

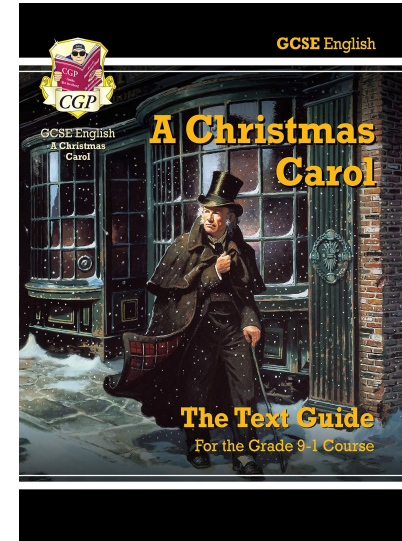
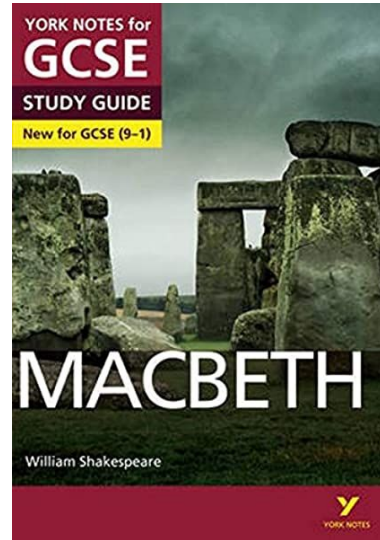
How it's assessed

- written exam: 1 hour 45 minutes
- 64 marks
- 40% of GCSE

Questions

Section A Shakespeare: students will answer one question on their play of choice. They will be required to write in detail about an extract from the play and then to write about the play as a whole.

Section B The 19th-century novel: students will answer one question on their novel of choice. They will be required to write in detail about an extract from the novel and then to write about the novel as a whole.



English Literature

Paper 2: Modern texts and poetry

What's assessed

- [Modern prose or drama texts](#) (page 11)
- [The poetry anthology](#) (page 12)
- [Unseen poetry](#) (page 12)

How it's assessed

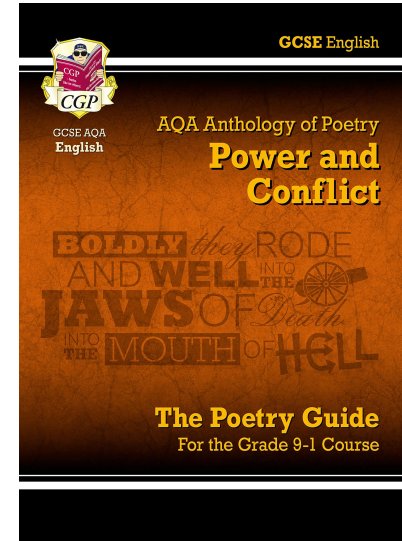
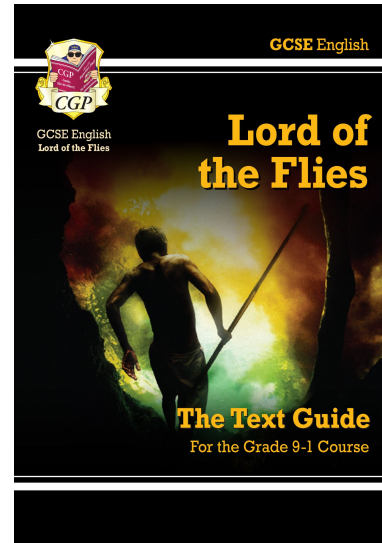
- written exam: 2 hour 15 minutes
- 96 marks
- 60% of GCSE

Questions

Section A Modern texts: students will answer one essay question from a choice of two on their studied modern prose or drama text.

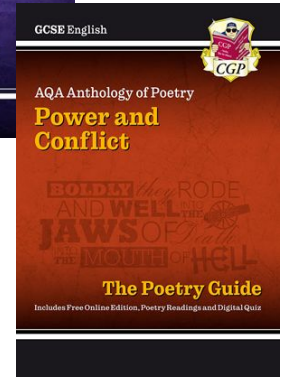
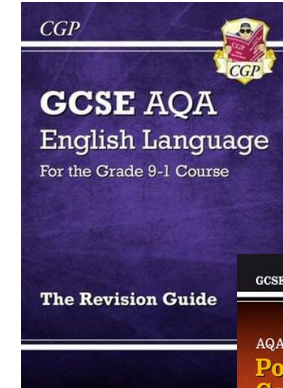
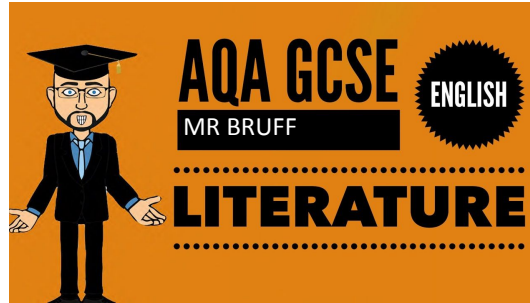
Section B Poetry: students will answer one comparative question on one named poem printed on the paper and one other poem from their chosen anthology cluster.

Section C Unseen poetry: Students will answer one question on one unseen poem and one question comparing this poem with a second unseen poem.



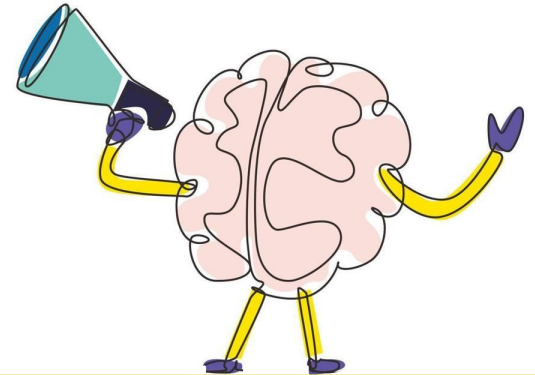
Revision Resources

- Rednock Revise
- Seneca
- Mr Bruff (YouTube)
- Revision Guides
- Google classroom
- Quotation booklets
- English exercise books!



Effective ways to revise:

Just reading over your notes won't help to get the information to stick in your brain.
You need to do something with that information!



Flashcards

Useful for:

- Quotations
- Gap filling
- Questions
- Subject terminology
- Information about characters...

Front

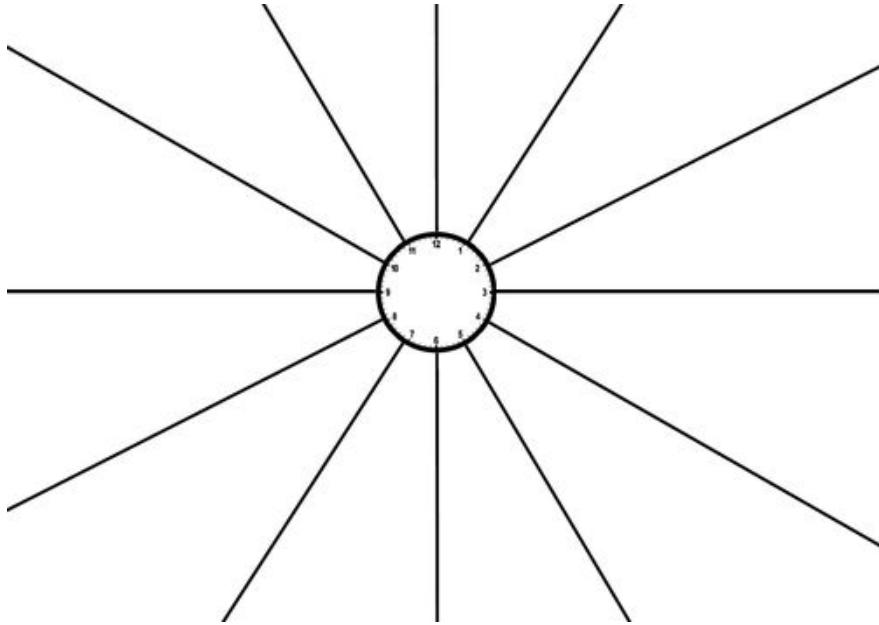
*How tall is
Mount Everest?*

Back

*8,848 metres
above sea level*



Revision Clock



Revising little and often is the key so here is a way to break down an hour into helpful chunks.

Ways that you can use this:

- Split it into themes from a text
- Have each section on a poem
- Make notes on a character in each section
- It can even be from across texts. For example, how conflict is shown in each of the texts that you study.



Past Papers

Useful for:

- Timings
- Skills
- Knowing what is expected from each question

AQA **SPECIMEN MATERIAL 2**

Please write clearly in black ink.

Centre number: Candidate number:

Surname: _____
Forename(s): _____
Candidate signature: _____

**GCSE
ENGLISH LANGUAGE
(8700)**
Paper 2: Writers' viewpoints and perspectives

Time allowed: 1 hour 45 minutes

Materials
For this paper you must have:

- Source A and Source B – which are provided as a separate insert

Instructions

- Answer all questions.
- Use black ink or black ball point pen.
- Fill in the boxes on this page.
- You must answer the questions in the spaces provided.
- Do not write outside the lines around each page or on blank pages.
- If an instruction in the task asks through any way you do not want to be marked, you must refer to the insert booklet provided.
- You must not use a dictionary.

Information

- The marks for questions are shown in brackets.
- The maximum mark of this paper is 60.
- There are 10 marks for Section A and 40 marks for Section B.
- You are reminded of the need for good English and clear presentation in your answers.
- You will be assessed on the quality of your reading in Section A.
- You will be assessed on the quality of your writing in Section B.

Advice

- You are advised to spend about 10 minutes reading through the source and all five questions you have to answer.
- You should make sure you have sufficient time to check your answers.

Insert code: **8700/2**

AQA **SPECIMEN MATERIAL 2**

**GCSE
ENGLISH LANGUAGE
(8700)**
Paper 2: Explorations in creative reading and writing

Insert

The source that follows is:

Source A: 20th Century prose fiction.
As edited from the novel *Signifier Post* by Graham Greene.

Please turn the page over to see the source.

Insert to 8700/1



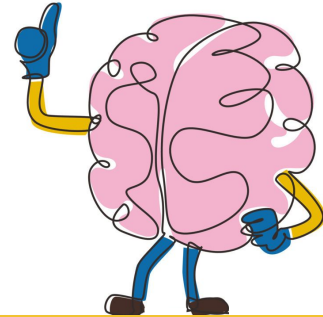
Past Papers

Grade boundaries are only decided after students have sat their final exams. We can only use our professional judgement and previous experience to predict grades. What is more important is that students always know what they need to do to improve.

Please remind them of this and don't allow them to become too confident or too disheartened after each mock.

Please do not hesitate to contact me if there is anything I can do to support you and your child.

sarah.melvillebrown@rednockschool.org.uk



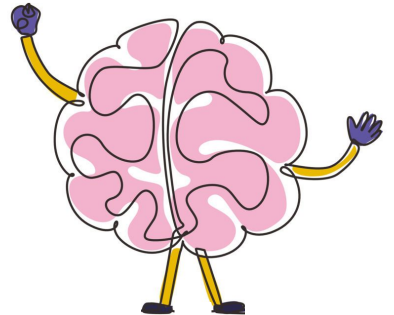
Maths



AQA GCSE Maths - Assessment

Examination Papers - Sat at the end of Year 11:

- 3 x 90 min papers
 - 1 x non-calculator
 - 2 x calculator
- Two tiers of entry
 - Foundation - (Grades 1 to 5)
 - Higher - (Grades 4 to 9)



GCSE Maths - Ready to Learn

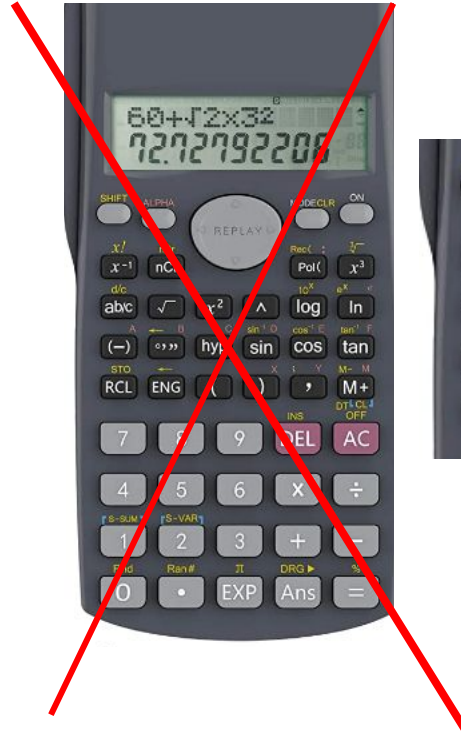
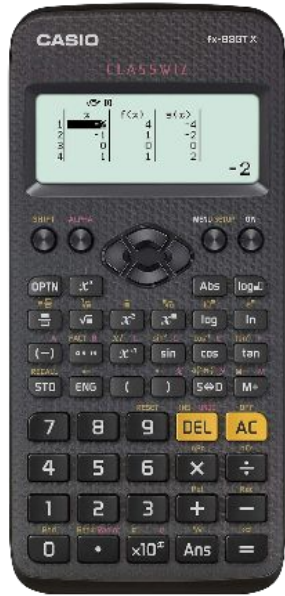
Equipment - Bring to every lesson:

- Exercise book
- Pens/Pencils
- Ruler
- Calculator
- Protractor
- A pair of compasses

YOU CAN ALWAYS
COUNT ON ME



Calculators fx-83GTX



Available via School Parent Pay - £12.80



Course Content

Subject area	Weighting	
	Foundation Tier	Higher Tier
Number	25%	15%
Algebra	20%	30%
Ratio, proportion and rates of change	25%	20%
Geometry and measures	15%	20%
Probability and statistics	15%	15%



GCSE Paper 1 Questions

13

In a game the average score was 50

Tom's score was $\frac{5}{2}$ of the average.

Circle Tom's score.

[1 mark]

125

175

30

20

Multiple Choice

22

Three friends arrive at a party.

Their arrival increases the number of people at the party by 20%

In total, how many people are now at the party?

[2 marks]

Application of
knowledge



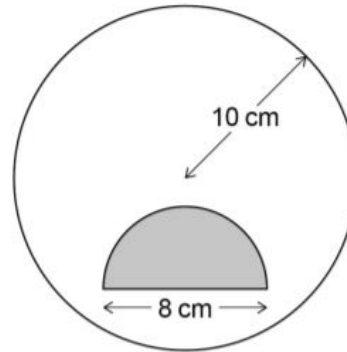
GCSE Paper 1 Questions

Multi topic task

25

A shaded semicircle is inside a circle as shown.

Not drawn accurately



The **radius** of the circle is 10 cm

The **diameter** of the semicircle is 8 cm

How many times bigger is the unshaded area than the shaded area?

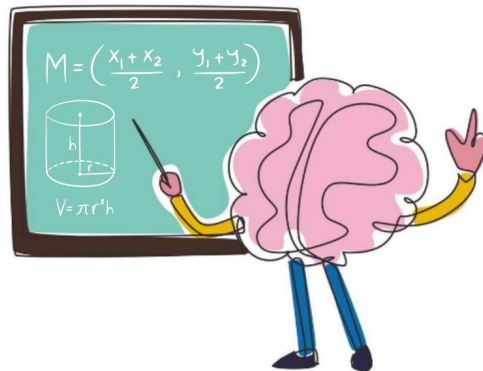
[4 marks]



Success in Maths

How can you help?

- The Maths has not changed but the methods may look different at times.
- Different methods does not mean you cannot help.
- Studies have shown that students and parents spending time studying together has a positive impact on outcomes.



Success in Maths

- Spend time working together on problems.
- If the methods you use are different compare solutions, discuss which is more efficient, ask them to explain their methods to you.
- Encourage them to believe they **can** do maths and offer opportunities to access maths at home when possible. Be positive about Maths yourselves.
- Make sure they know the basics – times tables.



Success in Maths

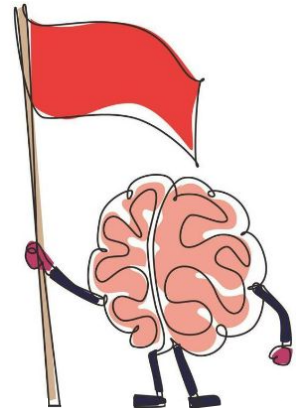
I'm stuck! What next?

- Look through their exercise book for an example and ask them to explain it to you.
- See if you can do the question together.
- If they are still struggling encourage them to watch a video on the topic on
 - [hegartymaths.com](https://www.hegartymaths.com)
 - [corbettmaths.com](https://www.corbettmaths.com)
 - [mathsgenie.co.uk](https://www.mathsgenie.co.uk)
 - [allaboutmaths.aqa.org.uk](https://www.allaboutmaths.aqa.org.uk)
- Still no luck, then ask their Maths Teacher in the next lesson.



Grades and opportunities

- Good grades in all subjects are essential but;
 - Employers more and more want good grades in Maths and English
 - A minimum standard has been introduced for all students to achieve and they will have to keep studying until 18 to achieve it (Grade 4)
 - This is about more than factual knowledge and is about demonstrating communication skills, problem solving ability and initiative



Science



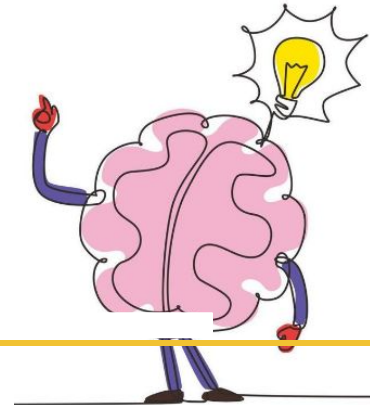
GCSE Science – what is involved?

- Students sit two papers in Biology, two in Chemistry and two in Physics – triple Science papers are longer.
- Triple Science get three grades – one in each Science.
- Combined Science get two grades – 44, 45, 55, etc.



Tiers of entry

- Foundation tier – grades 1-5
- Higher tier – grades 4-9 (below that is grade U)
- Realistically, students need to be able to consistently achieve a high grade 5 in higher tier practise papers and be in reach of a grade 6 to succeed on the higher.
- Final decision doesn't need to be made until spring of Y11.



Where do my marks come from?

- Remembering stuff - 40% of exam marks
- Application of knowledge 40% of exam marks
- Analysing data - 20% of exam marks.

Writing precisely and being numerate are very important to Science too!



Required Practicals

The screenshot shows a virtual laboratory interface with the following components:

- Ruler:** A horizontal ruler with a scale from 0 to 10 cm. A yellow rectangular sample is positioned above the ruler, spanning from the 0 mark to the 5 cm mark.
- Text:** Below the ruler, the text "drag on the ruler to set the sample size" is displayed in blue.
- Filter Paper:** A small yellow rectangular sample is placed on a grey horizontal line labeled "filter paper".
- Glucose Solution:** A beaker containing a light blue liquid, labeled "glucose solution".
- Balance:** A green balance scale with a digital display showing "0.000g".
- Control Panel:**
 - Text: "Glucose 0.5 mol/dm³"
 - Slider: A horizontal slider with a blue bar and a grey knob, labeled "Time 0".
 - Buttons: Two grey square buttons with left and right arrow symbols.
 - Radio Buttons:
 - Set sample size
 - Sample in beaker
 - Weigh the sample
- Zoom:** A small square icon with corner brackets in the bottom right corner.



Key Skills

Describe - Say what you see

Explain - Because...

Evaluate - Good bits, bad bits, what do you think.

Can you write a method for...



Assessment in Science

Tests every term – look out for the revision lists on show my homework!

Topic	What to revise	How to revise it
Bio	How to make a microscope slide, including the names of the equipment you would use.	Watch the required practical video and look at the practical sheet (both on the <u>Rednock</u> website). From memory try to write down a list of all of the equipment and all of the steps.

‘Recap’ questions every lesson and 10 minutes of silent working to tackle exam questions and key skills.



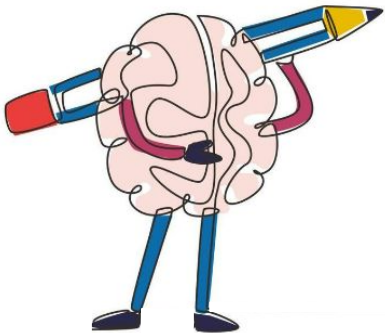
Lots of resources are available online



Science revision

Home · Double science (trilogy) · Triple Science · **Useful resources**

Useful resources

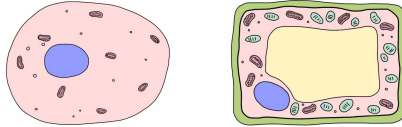


Cell structure part 1 - Eukaryotes and prokaryotes

KnowIT

All living things are **made** of **cells**, they are the **basic unit** of all **life**.

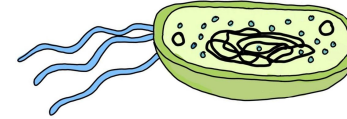
Eukaryotic cells



Have a cell membrane, cytoplasm and genetic material (DNA) enclosed in a nucleus

Animal and plant cells are eukaryotic cells

Prokaryotic cells



These are **smaller** than eukaryotic cells. The genetic material is not enclosed in a nucleus. The DNA is a single loop and there may be one or more rings of DNA called plasmids.

Bacterial cells are prokaryotic cells

Prefixes are used in science to make very small numbers more manageable. You need to learn the ones in the table and be able to convert to and from standard form.

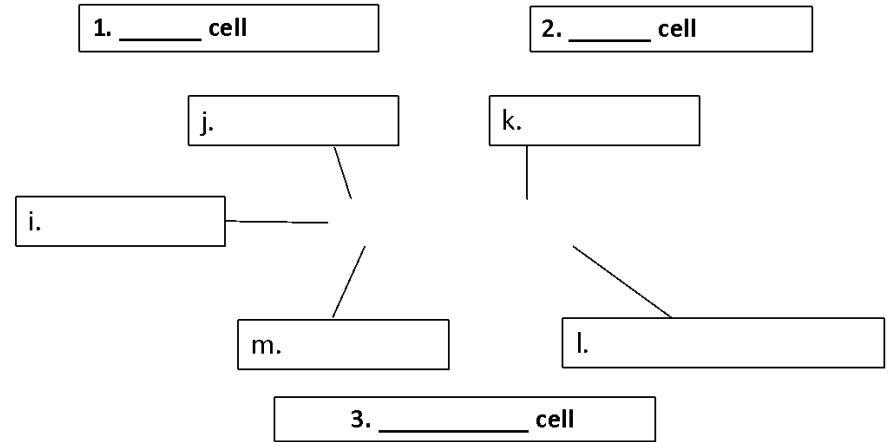
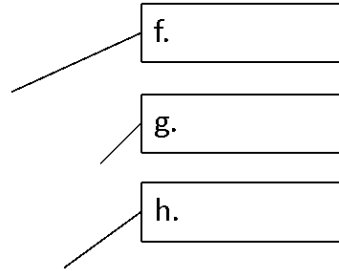
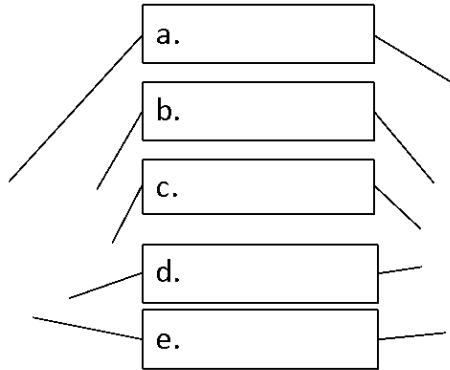
Prefix	Multiple	Standard form
centi (cm)	1 cm = 0.01 m	$\times 10^{-2}$
milli (mm)	1 mm = 0.001 m	$\times 10^{-3}$
micro (μm)	1 μm = 0.000 001 m	$\times 10^{-6}$
nano (nm)	1 nm = 0.000 000 001 m	$\times 10^{-9}$



Cell structure part 1 - QuestionIT

5. Name the structures **A to L** on the diagrams below and label cells 1, 2 and 3.

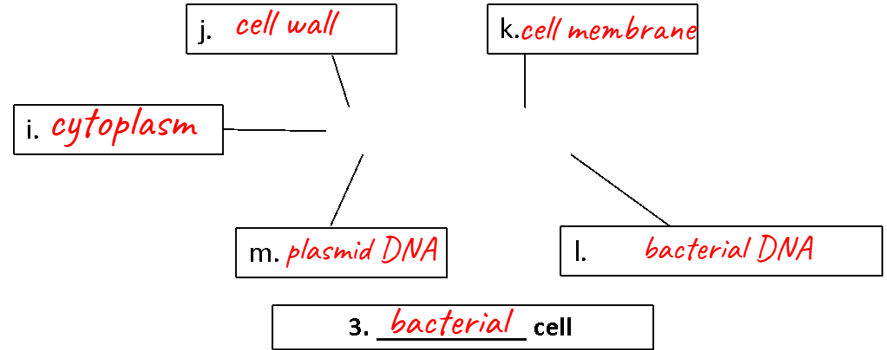
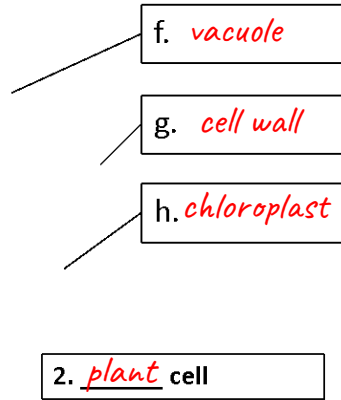
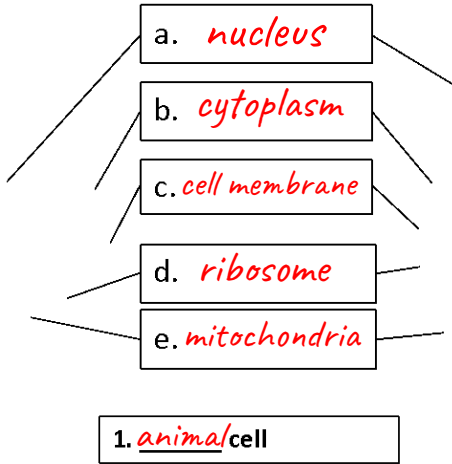
KnowIT



Cell structure part 1 - AnswerIT

5. Name the structures **A to L** on the diagrams below and label cells 1, 2 and 3.

KnowIT



Cell structure part 1 - Eukaryotic, prokaryotes and animal and plant cells

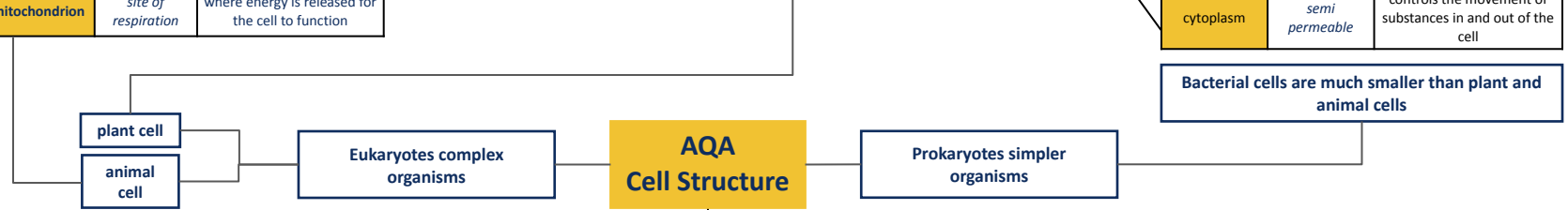
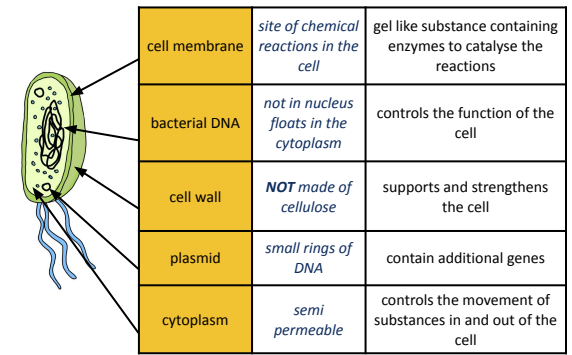
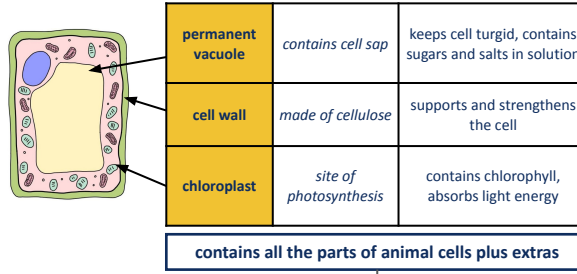
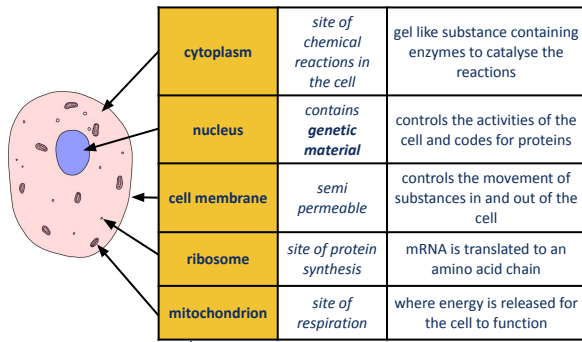
1. Describe the similarities and differences between a typical plant and a typical animal cell. (4)
2. Ribosomes synthesise proteins. Explain what this means. (2)
3. Explain why the mitochondria in cells are important. (3)

GraspIT

Cell structure part 1 - Eukaryotic, prokaryotes and animal and plant cells

1. Describe the similarities and differences between a typical plant and a typical animal cell. (4)
 - *Typical animal and plant cells contain the following structures: nucleus, cytoplasm, cell membrane, ribosomes, mitochondria (2)*
 - *Plant cells also contain a permanent vacuole, a cell wall and chloroplasts (2)*





magnification M = size of image I / real size of the object A

PREFIXES		
Prefix	Multiple	Standard form
centi (cm)	1 cm = 0.01 m	$\times 10^{-2}$
milli (mm)	1 mm = 0.001 m	$\times 10^{-3}$
micro (µm)	1 µm = 0.000 001 m	$\times 10^{-6}$
nano (nm)	1nm = 0.000 000 001 m	$\times 10^{-9}$

Feature	Light (optical) microscope	Electron microscope
Radiation used	Light rays	Electron beams
Max magnification	~ 1500 times	~ 2 000 000 times
Resolution	200nm	0.2nm
Size of microscope	Small and portable	Very large and not portable
Cost	~£100 for a school one	Several £100,000 to £1 million plus

nerve		<i>carry electrical signals</i>	long branched connections and insulating sheath
sperm		<i>fertilise an egg</i>	streamlined with a long tail acrosome containing enzymes large number of mitochondria
muscle		<i>contract to allow movement</i>	contains a large number of mitochondria long
root hair		<i>absorb water and minerals from soil</i>	hair like projections to increase the surface area
xylem		<i>carry water and minerals</i>	TRANSPIRATION - dead cells cell walls toughened by lignin flows in one direction
phloem		<i>carry glucose</i>	TRANSLOCATION - living cells cells have end plates with holes flows in both directions



Other useful resources



Choose entry level subscription for free videos



Both break the material down into chunks and provide questions BUT don't cover longer written answers.

Make sure you pick the right course!





Thank you

