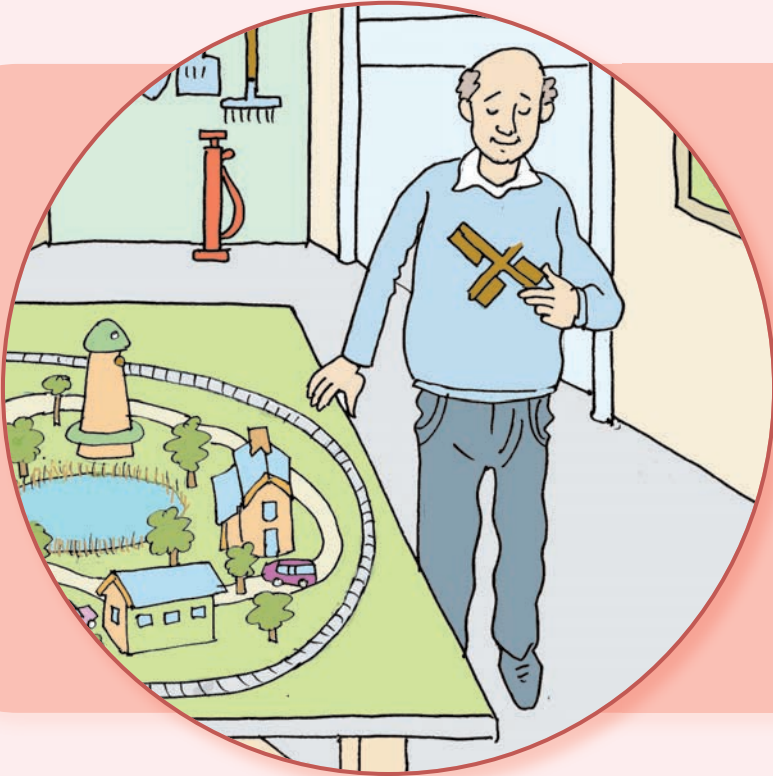


The Train Set



Written by Elizabeth Charman

Illustrated by Robin Lawrie

Green words

Practises ee

need

green

trees

peeks

sweet

sleeping

see

sheep

keen

reeds

Red words

Previous red words

is

of

do

his

I

me

he

you

be

to

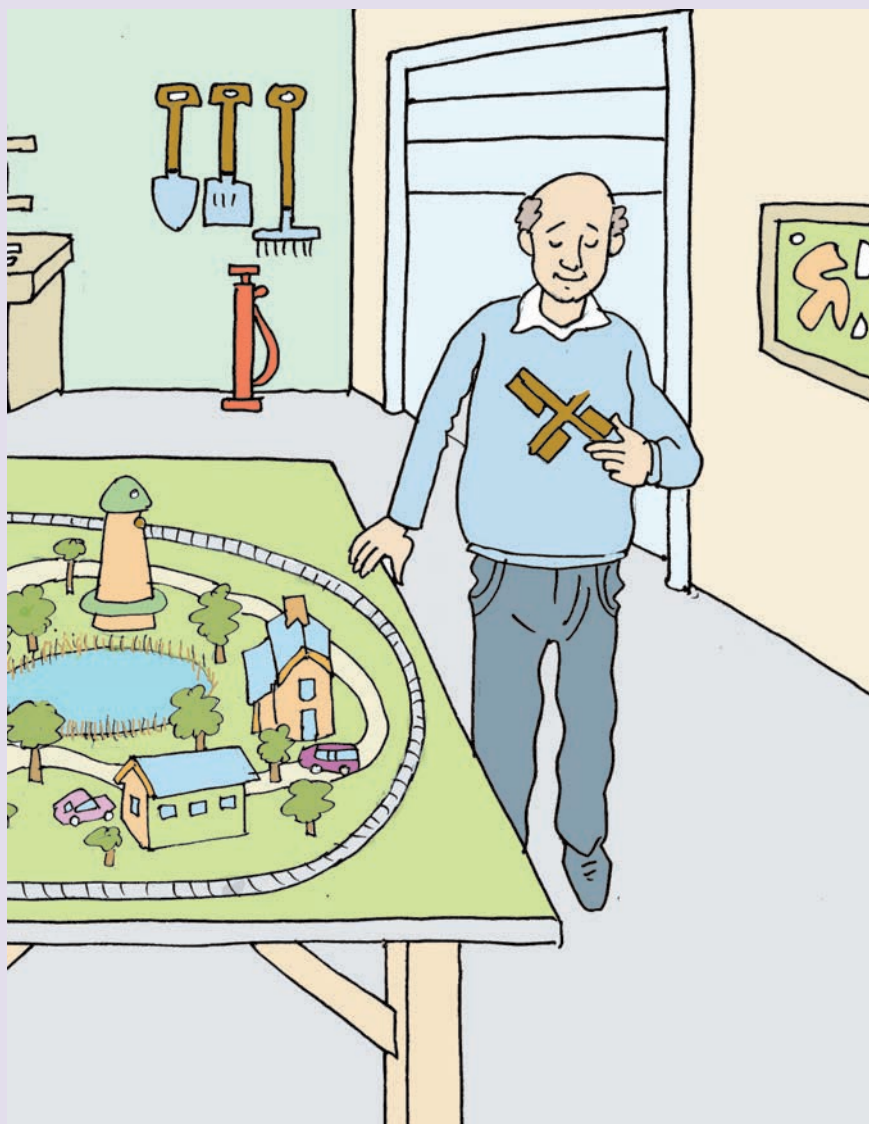
the

so

New red words

my

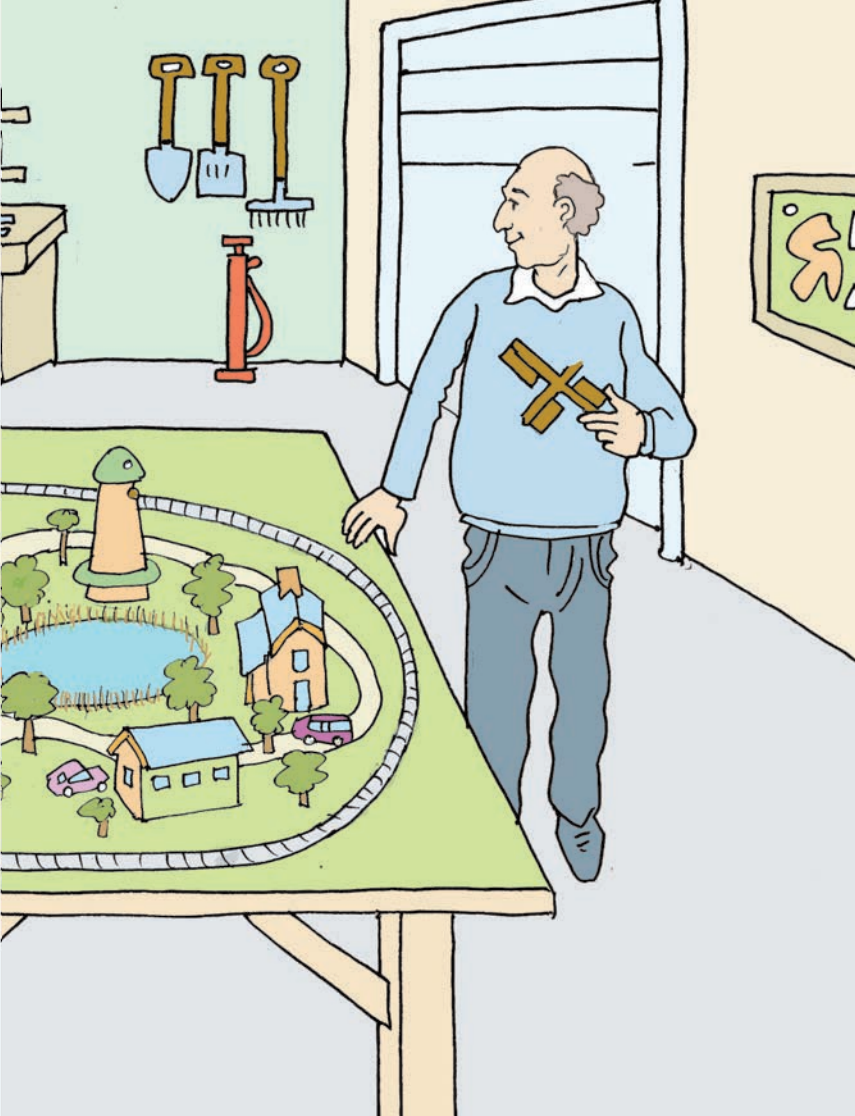
by



Pops is at his train set.
He needs to mend a bit of it.



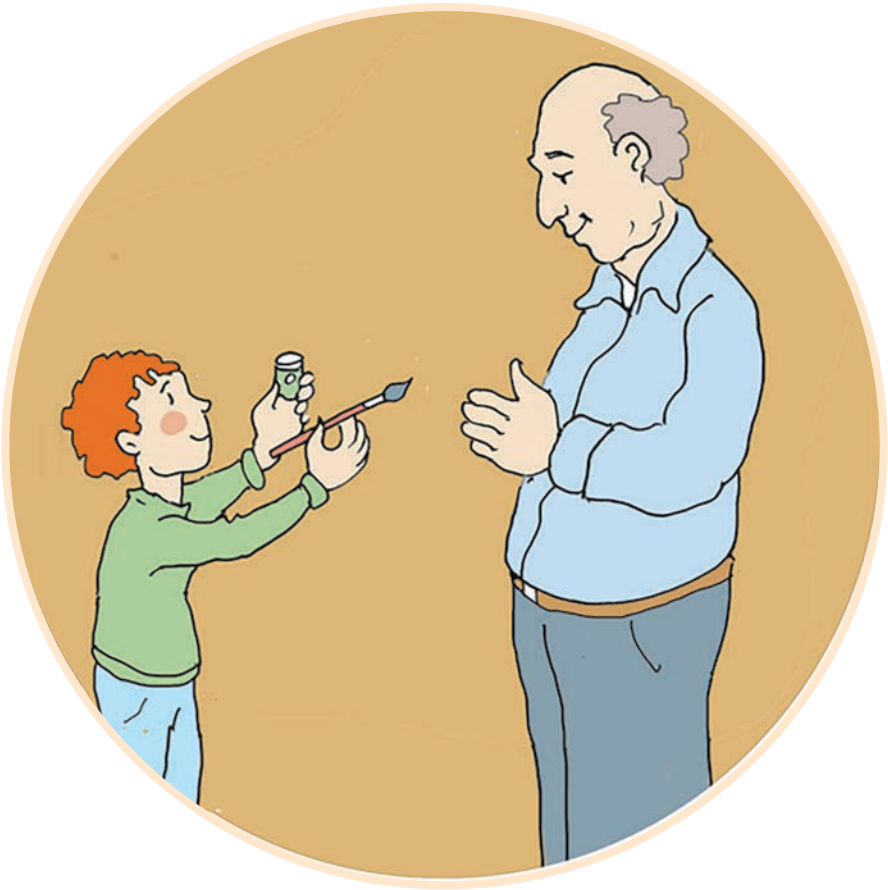
Ben peeks in.
“Pops, can I see?”



“Yes, pet. You see the windmill?
And this sail?
I am fitting it back on.
Then I will paint it.”



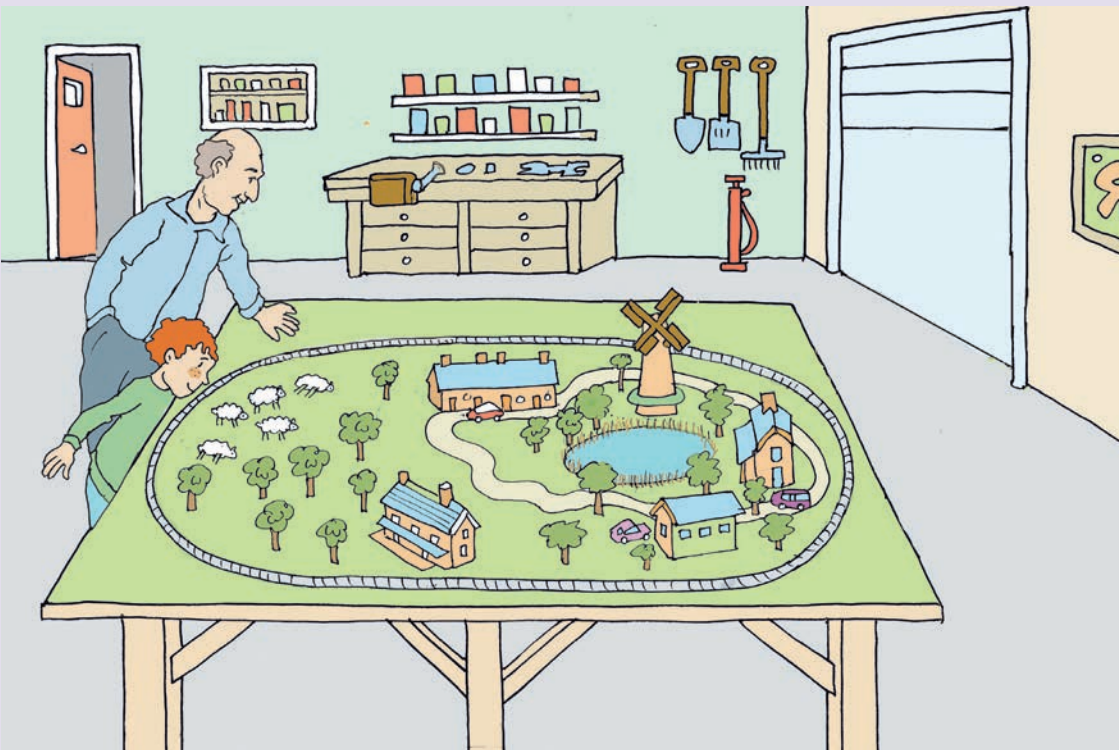
Ben is keen to help his Pops.
“Can I do it, Pops?”



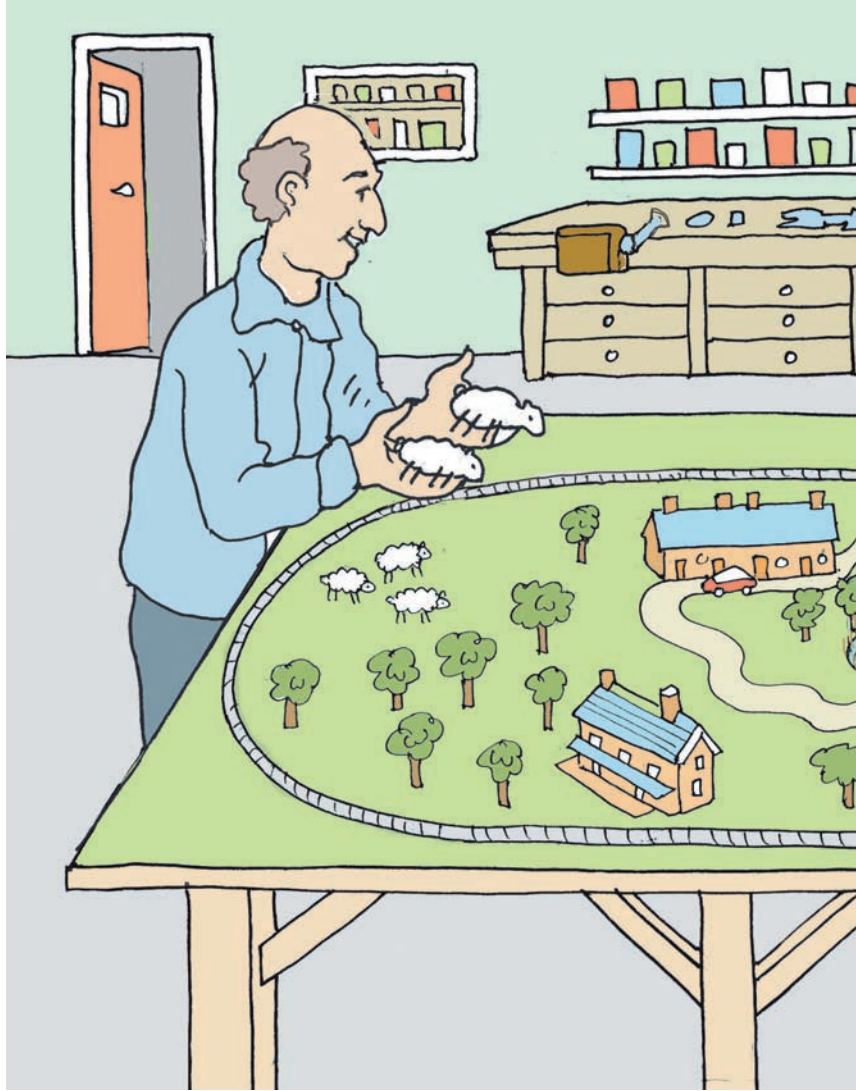
“Well, let me see. Yes, I need my brush and the green paint. Can you get them? Thank you, Ben.”



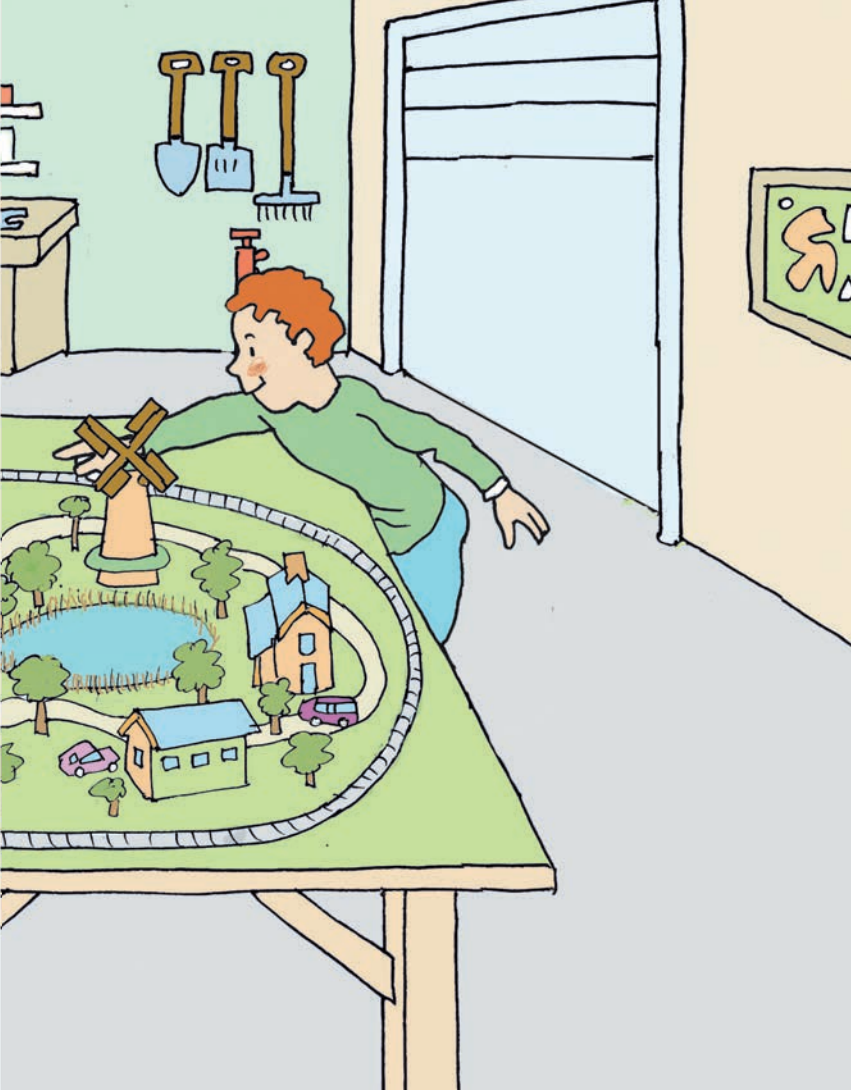
Pops dabs paint on the sail and
fits it on.
Sweet!



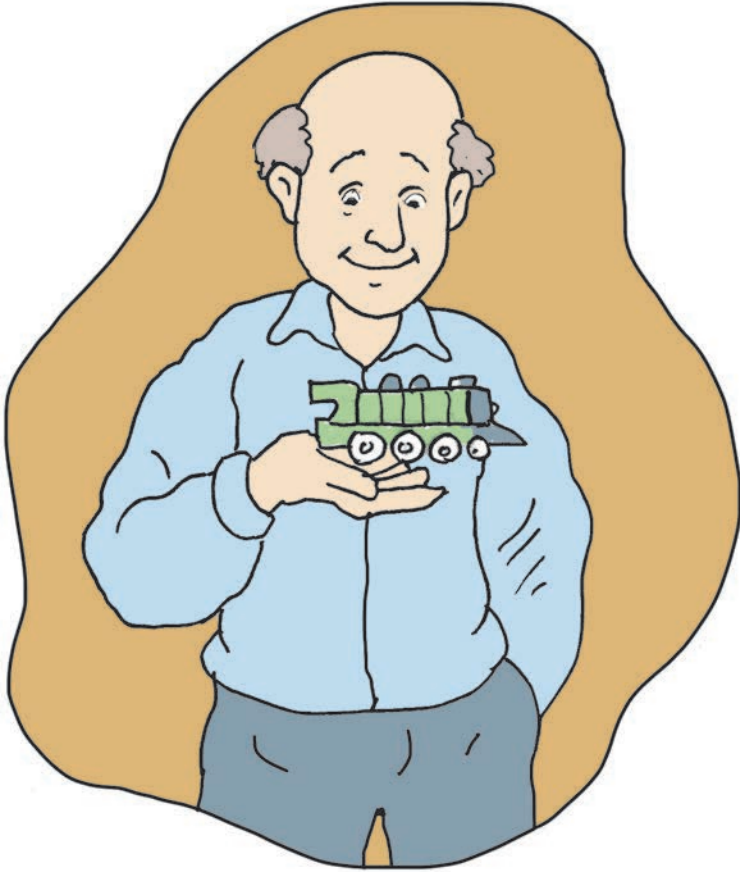
“I think the sheep need to be by the pond.”



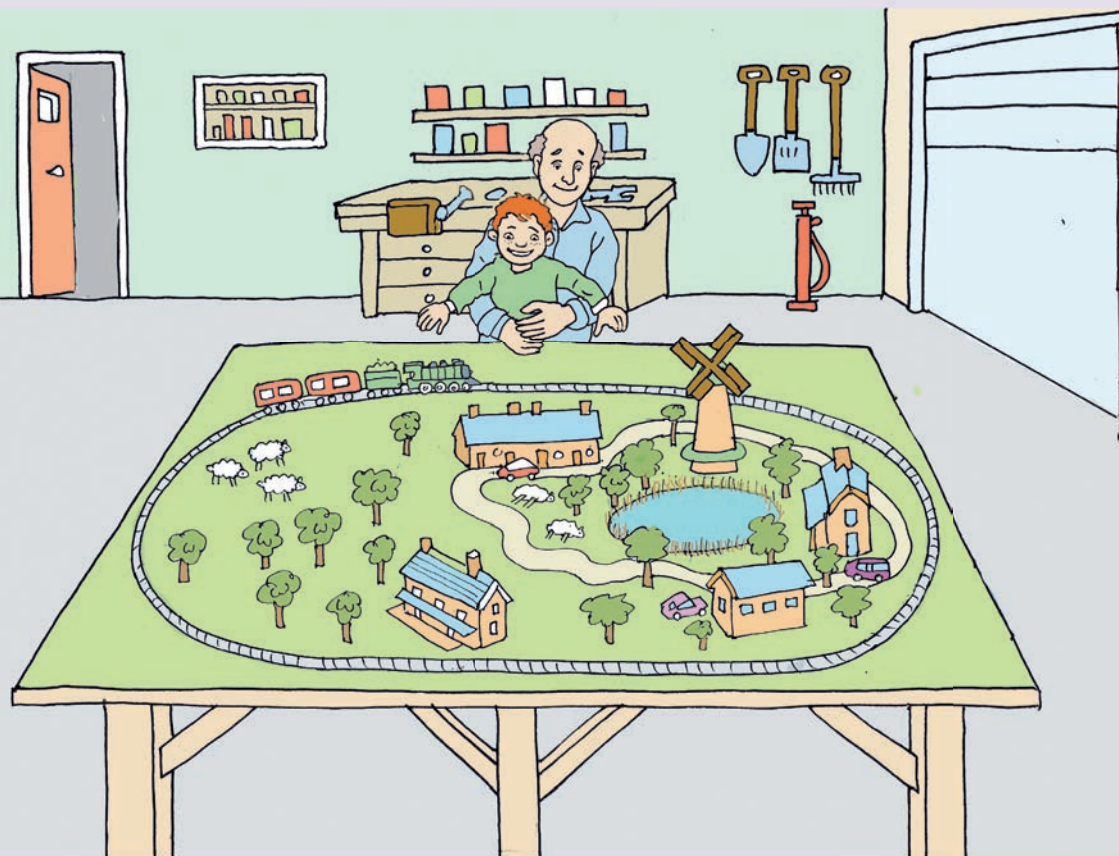
“By the reeds, pet? By the trees?”



“Sleeping by the trees, Pops.”



“So, let’s get the train to run on the rails.”



“Shall I lift you to see, pet?”



Chuff! Chuff! Chuff!
“Yes, Pops, yes!”

Questions

Can you answer these questions about the story?

1. Can Ben help Pops mend the train set?
2. Is the sail of the windmill painted pink?
3. Is Ben glad to see the train run on the track?

Published by FFT Education
www.fft.org.uk

Text and original illustrations copyright © FFT Education, 2021.

All rights reserved. No part of this book may be reproduced in any form without permission from the publisher.

Written by Elizabeth Charman
Illustrated by Robin Lawrie (Beehive illustration)

Produced and edited by Oriol Square

ISBN 978-1-915315-13-7
Printed in the UK by Just Digital
First published 2021

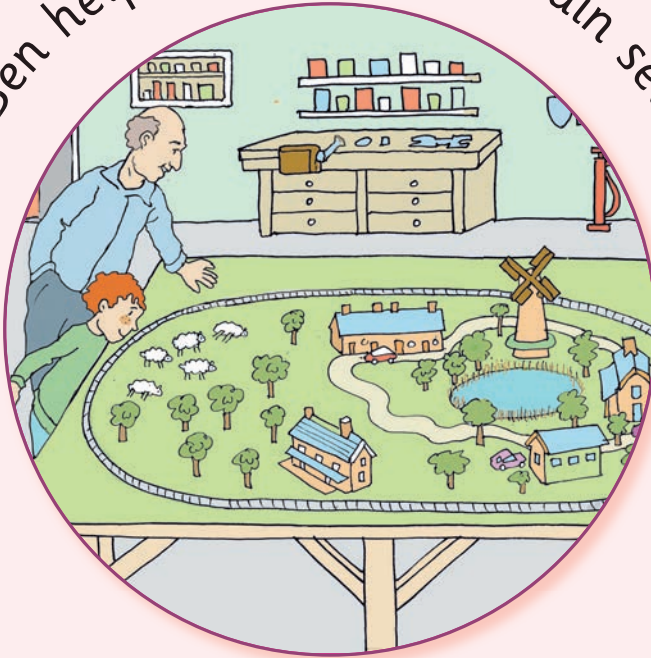
Shared Reader 14

ee

Letters and Sounds

Phase 3

Ben helps Pops with his train set.



Success for All
Phonics

ISBN 978-1-915315-13-7



9 781915 315137 >