

# Headteachers Weekly Newsletter



XP.

Heads Newsletter 23/24 Issue: 16

Date: 19.01.2024

Messages:

Next Week:

## New Year Party

What a great day we had! Lunch was amazing and the children enjoyed their lunchtime party and DISCO. It was lovely to share this experience with the children, staff and kitchen staff...it was enjoyed by all!

## Letter Join

<https://greentopschool.co.uk/accessing-letter-join-at-home-2/>

## Start of the day

We can't thank you enough for your efforts in being at school on time (8:30) this week. The change to the start of the day, which we started in September, has had a massive impact on school. The children are settled, focused and ready for learning. Thanks again for improving punctuality at Green Top!

## Monday

Staff Day (6)

## Wednesday

EYFS fairytale sponsored walk

**Spring one dates:** <https://greentopschool.co.uk/spring-1-diary-dates/>

## Young Voices

<https://greentopschool.co.uk/young-voices-lyrics/>

**Coming soon:** <https://greentopschool.co.uk/nspcc-number-day-2024/>

Expedition:

In Key stage 1 this week, we introduced our new text 'The tin forest' and we created our own forest pictures using tin foil. We then wrote some fantastic descriptions using expanded noun phrases, alliteration and exciting vocabulary to excite the readers. Great work KS1!

Crew:

In crew, KS1 have been setting targets for the term after our SLC's and looking in detail at our character traits. We are beginning to use words like 'integrity' and 'craftsmanship' to talk about our day when we do our daily check out too, which is fabulous. In community crew, we also learnt that our minds need to be healthy, just like our bodies and we have discussed different ways to do that.

# Headteachers Weekly Newsletter



XP.

## Attendance shout outs:

Our attendance winners for last week were:

**Crew Myers**

Well done - great work!!



## Beautiful Work:

<https://greentopschool.co.uk/reception-family-learning-3/>



## Blog of the week:

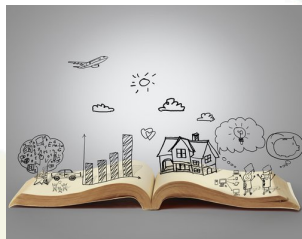
<https://greentopschool.co.uk/year-4-outdoor-reading-%f0%9f%93%96/>

What a lovely way to immerse yourselves into your new class text!



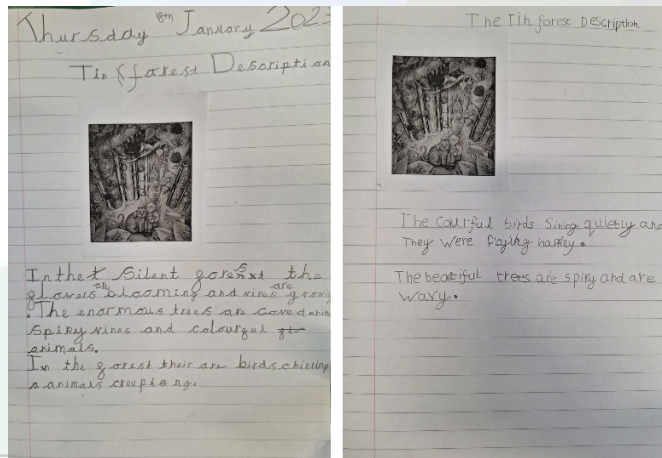
## Sharing our stories as we go...

Have you seen our recent XP Trust 'Sharing Our Stories' and 'Beautiful Work' blog post?



## Academic Success

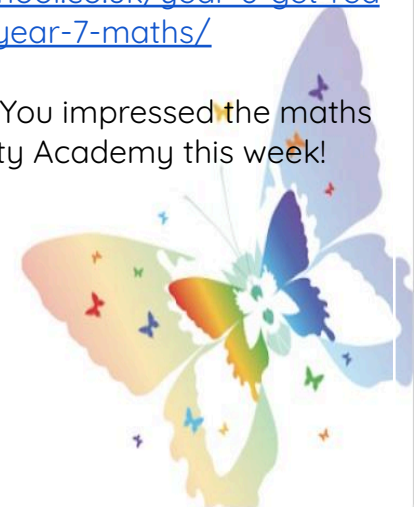
<https://greentopschool.co.uk/class-8-setting-descriptions/>



## Shout out:

<https://greentopschool.co.uk/year-6-get-ready-for-year-7-maths/>

Well done year 6! You impressed the maths teacher at Trinity Academy this week!



# Headteachers Weekly Newsletter



XP.

Message from 'The Friend's of GT':

Spring term plans:

Spring DISCO  
Easter Fayre

More details to follow soon



Recent Letter from the headteacher:

**January Letter**

<https://greentopschool.co.uk/january-letter/>

Weekly lunch menus:

Please find dinner menus attached:

📎 DINNER MENUS wc 30-10-23.pdf



## Communication

Phase Leader email addresses:

EYFS - Miss Carter - [eyfs@greentopschool.org](mailto:eyfs@greentopschool.org)

KS1 - Mrs Shaw - [ks1@greentopschool.org](mailto:ks1@greentopschool.org)

Y3/4 - Miss Knowles - [y3-4@greentopschool.org](mailto:y3-4@greentopschool.org)

Y5/6 - Mr Mumby - [y5-6@greentopschool.org](mailto:y5-6@greentopschool.org)

*In the first instance please speak to crew leader or class teacher.*

## Sunset

Should you wish to access our **sunset club** you can book by contacting Mrs Fitzpatrick: [office@greentopschool.org](mailto:office@greentopschool.org).

*Please include the following details: name, teacher, any allergies/dietary requirements, days required and a Contact number.*

Sunset club runs from 4pm to 5:30pm daily at £5 per day which should be paid in advance via ParentPay.

## School Drive

### **Driving into the school grounds**

*Please **DON'T** drive into the school grounds to drop off in a morning and pick up at the end of the day. This is becoming extremely dangerous for our children. Please use Bridge Street car park and help us to keep our children and community safe!*

Please walk down the path and not the drive, keep yourself safe!

Please dismount your bikes on the school premises for everyone's safety.

## Reminders

### Health Advice from Doncaster Council

Please find attached a letter from Doncaster Council regarding back to school winter health advice.

Can I please remind you to contact the school office (01405 813181) to inform us when your child is ill. This should be done daily.

### Communication

If you use the Teachers2Parents APP for receiving school texts/emails please ensure you turn the notifications alert to 'on' so you don't miss any messages. For all the latest school news and information please visit our Green Top website and blogs.

### PE Kits

Please ensure that PE kits are in school on PE days. It is important that the children have the correct kit and footwear to ensure safety during the lesson. We also don't want children ruining their school shoes due to wearing them for PE and if it is outdoors, covering their shoes and uniform in mud!

# Headteachers Weekly Newsletter



We are always available for additional advice should you require to check anything with us.

📄 Copy to PARENTS Letter to Head Teachers ...

All bags and kits will be sent home on a Friday so corridors are clear. Please send children's clean PE kits back into school on a Monday morning ready for their PE lesson.

## Start of the day - This will start from Monday

Thank you to everyone for making our new 8:30 start so successful. After giving everyone a full term to get used to this, from January we will now be starting learning at 8:35 rather than 8:45 so it is important that you arrive at school on time. The gates will also be locked at 8:45 rather than 9am. This has had a very positive impact in school and so we thank you for your support with this.

## Yellow T-Shirts

Please can you ensure that you return yellow T-Shirts the week after your child receives the community crew award. We are getting low and don't want to have to take this lovely gesture away from the children due to them not being returned.

## External Information

Your Place will return to Green Top on Friday 26th January. Please join us!

**THIS FRIDAY**

**Your Place School Drop Ins**

The team are on hand to chat through anything you are concerned about and may need support with:

- Benefits
- Family support
- Local groups and activities
- Childcare
- Anti-social behaviour
- Housing support
- Employment
- Debt and financial concerns
- Education support for your child as well as information for adults wanting to access adult learning courses.

Drop in for a chat and see what we can help you with

📍 Green Top Primary School

🕒 Fri 24th Nov, Fri 22nd Dec, Fri 26th Jan  
08:30-10:00  
(Excludes school holidays)

[www.yourlifedoncaster.co.uk/east-your-place-hub](http://www.yourlifedoncaster.co.uk/east-your-place-hub)  
Email: [YourPlaceYourFamilyTeam@doncaster.gov.uk](mailto:YourPlaceYourFamilyTeam@doncaster.gov.uk)  
Call: 01302 736336

