

Welcome to our Y6 meeting



Thursday 21st September

Feel free to help yourself to a hot drink



A MULTI-ACADEMY TRUST

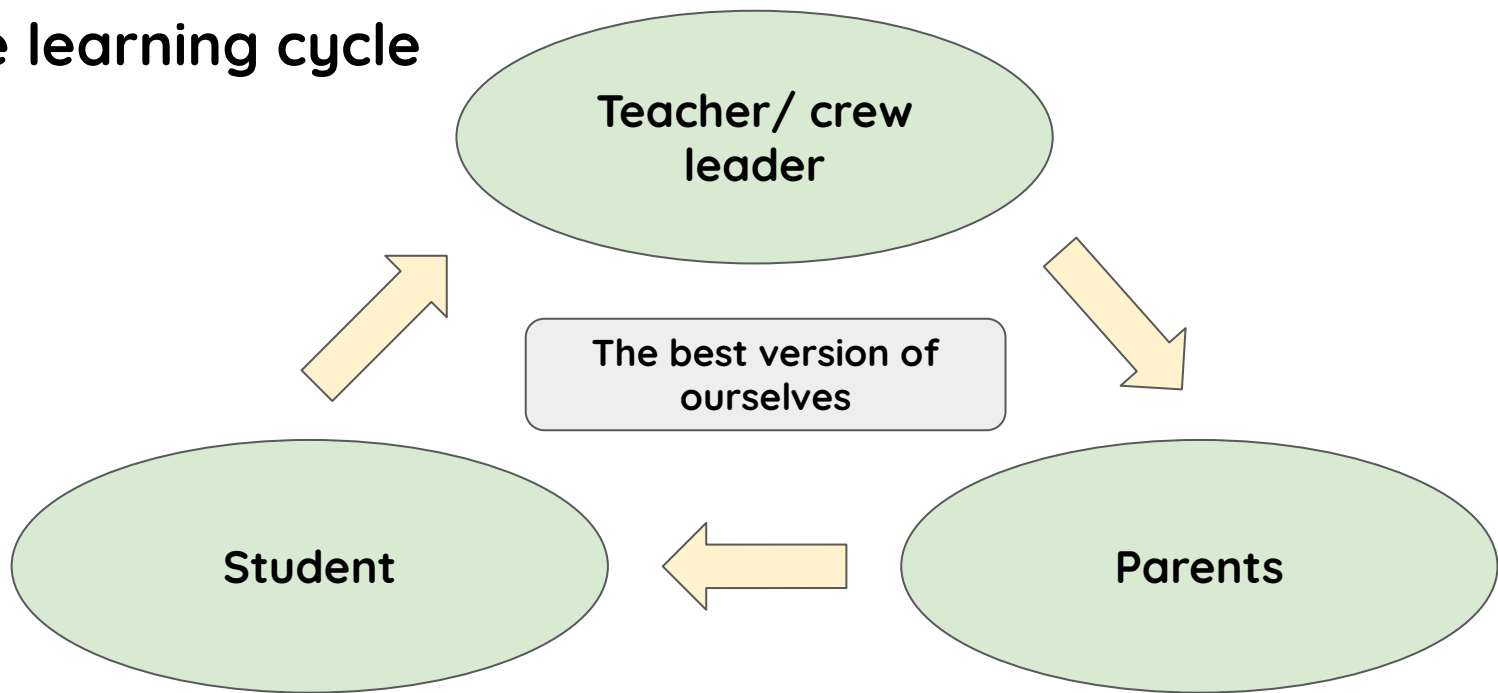
WE ARE CREW



We are stronger together.

www.xptrust.org

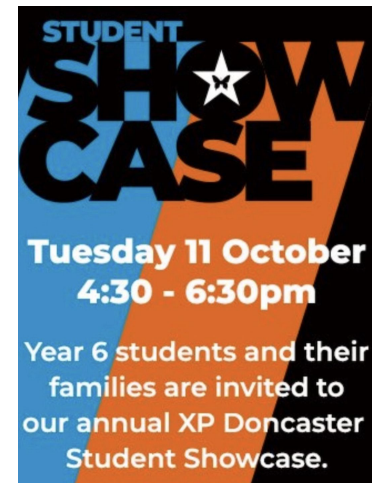
The learning cycle



Secondary School applications

[Link](#)

- Online application form
- The deadline for applications is the 31st of October.
- Parents must complete the application not the teacher.
- Please see your child's class teacher if you would like support with your application.



www.xptrust.org



A MULTI-ACADEMY TRUST

The **national offer** date is the **1st March**, you will be notified via **email** (address you applied with)

Secondary School applications

[Link](#)

Ash Hill Academy- Tuesday 26th September 4pm- 7pm

Trinity Academy- Thursday 28th September 4:30 presentation and one at 5:30

The Snaith School- Thursday 5th October, time 4:30 onwards

XP Doncaster- Tuesday 26th September 4pm- 6pm

The Axholme Academy- Open evening Wednesday 20th September 6-8pm or open mornings on 22nd and 25th September (please call 01724 710368 to book a place on the open morning events)

South Axholme- Thursday 21st September- Arrive at 6:15 for Thorne/Doncaster schools - 8:00pm



A MULTI-ACADEMY TRUST

The **national offer** date is the **1st March**, you will be notified via **email** (address you applied with)



www.xptrust.org

Weekly timetable

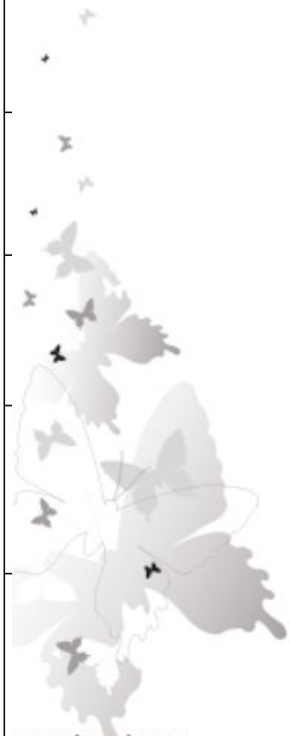
WE ARE CREW



We are stronger together

Day	8:45	9:15 - 10:15	10:15 - 10:30	10:40 - 11:40	11:40-12:00	12:00	1:00- 1:30	1:30 - 1:40	1:40 - 2:40	2:40
Monday	Target Setting Crew	English	Break	Maths	AR	Lunch	Reading Block	handwriting	Expedition	Crew check out
Tuesday	Academic Crew	English		Maths	AR		Reading Block	handwriting	Expedition	
Wednesday	Community Crew	English		Maths	AR		Reading Block	handwriting	Expedition	
Thursday	Phase community crew	English		Maths	AR		Reading Block	Flexible/Red-box session based on class need		
Friday	Flexible Friday crew	G Block		G Block			AR Time 1:10 - 1:30	PE FFT		

CREW READ



w.xptrust.org

Y6 at a Glance....



October	November	December
6th- Tag Rugby team at XP (letter to be sent out) 12th- Tropical World visit SPag monthly test Arithmetic monthly test	2nd- School disco 22nd- Family Learning Date to TBC Assessment week for Autumn term. 30th- Flu vaccinations	4th- Celebration of learning (5-6pm) 14th- Harry Potter visit (more details to follow) (22nd) End of term



Y6 at a Glance....



January	February	March
Start of Spring Term Booster sessions to begin	12th- Half term begins	28th- End of term



Y6 at a Glance....



April	May	June	July
15- School Starts	13th SATs week 21-23 Possible London Residential 27- Half Term		ALL DATES TBC Leavers party Leavers Trip Leavers Assembly Transition days



www.xptrust.org



SATs Week- Monday 13th May

Grammar and punctuation test- 45 minutes

Spelling test- 20 minutes

Support for these tests:

- SPAG site (more to be added) [link](#)
- CGP revision books

**WE ARE
CREW**



We are stronger together



www.xptrust.org



SATs Week- Tuesday 14th May

- English reading paper- 60 minutes

Useful resources/ ideas

- CGP revision guides for reading
- Reading as frequently as possible (ideally to an adult) to develop stamina, accuracy and vocabulary knowledge.

**WE ARE
CREW**



We are stronger together



www.xptrust.org



SATs Week- Wednesday 15th May



- Maths- Arithmetic (Paper 1)- 30 minutes (number, fraction, calculation)
- Maths- Reasoning (paper 2)- 40 minutes (broader maths curriculum)

Useful resources/ ideas:

- Maths site (will be developed further) [Link](#)
- Maths CGP books
- TTRS (times tables)
- Weekly homework sheet (given out on a Friday)



SATs Week- Thursday 16th May

- Maths- reasoning (paper 3)

Useful resources/ ideas:

- Maths site (will be developed further) [Link](#)
- Maths CGP books
- TTRS (times tables)
- Weekly homework sheet (given out on a Friday)



Spring Term - Booster Clubs



- Y6 Booster Clubs - Reading and Arithmetic
- This will be on offer in the Spring Term
- We would like all children to attend, we will aim to split the children into smaller groups so that we can give them extra support and attention.



When will I find out about my child's academic performance throughout the year?

- Academic Snapshot (After each assessment week) inc Star reader data
- Student Led Conference (January)
- SATs results (early July)



A MULTI-ACADEMY TRUST



Year 6 and Attendance

Attendance expectations are high for our Year 6 students. We aim for at **least 97% attendance per Crew each week**.

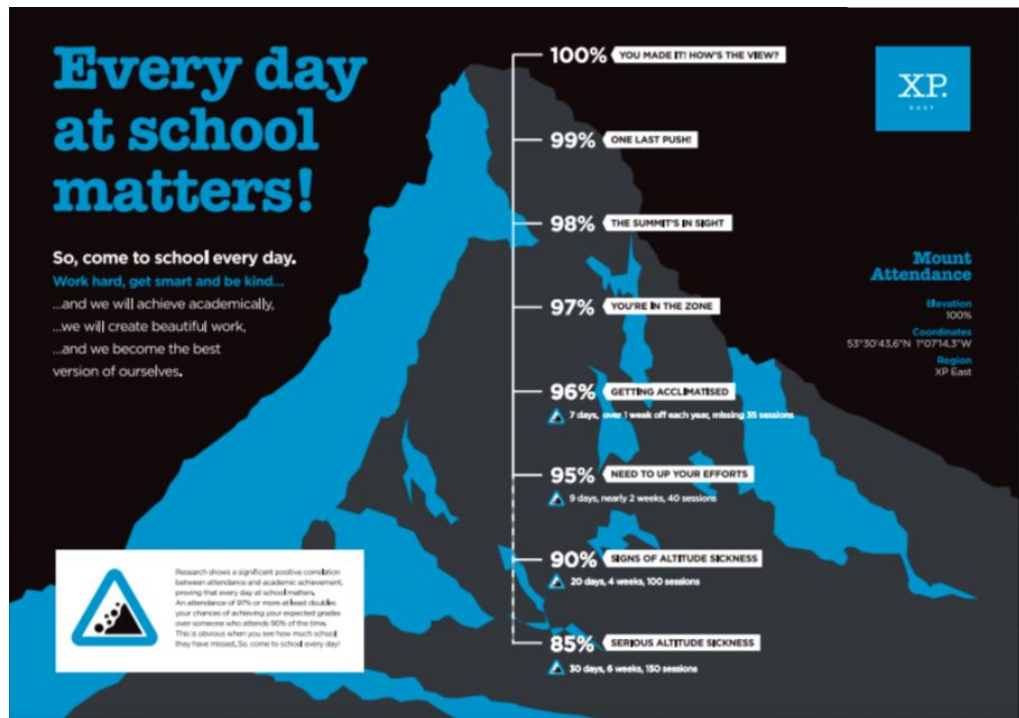
It is vital that Year 6 students attend school every day, due to our curriculum being so content heavy, it means one day off has a significant impact on their learning.

One day a week attendance must be a focus in Crew. Crew Leaders must discuss individual attendance and where praise students for their attendance and/or their improvement.

It is important that every student is aware of what their weekly attendance is.

Concerns around attendance must be raised with KS2 Phase Leads. This will then be discussed at our N4S meetings and appropriate actions taken.

A weekly attendance league is announced each week in the Whole School Community Meeting.



London Itinerary



DAY 1 Tuesday

06.30 Meet coach at school.
07.00 Depart school and proceed to London.
11.45 Approximate arrival in London
12.30 Bus tour with David Drury
17.00 Evening meal at Hardrock Cafe
19.00 Approximate arrival at Premier Inn

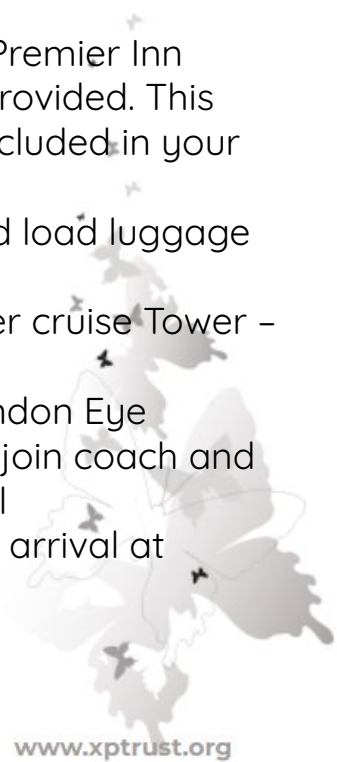
DAY 2 Wednesday

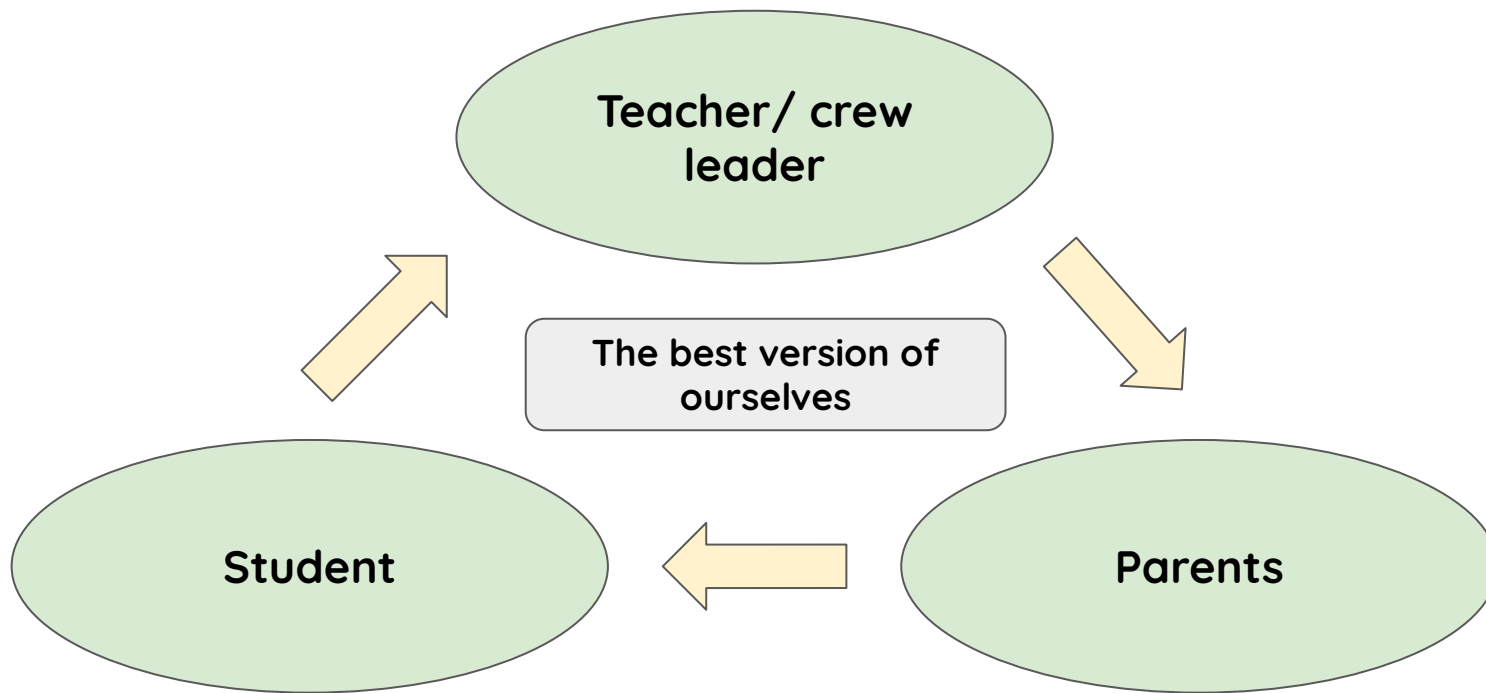
AM Breakfast at Premier Inn

10.00 Visit to Natural History Museum
13.00 Visit to Science Museum
15.45 Group to re-join coach and proceed to Central London
17.00 Evening meal at Pizza Hut
19.30 Evening performance for a West End Show
21.15 Performance ends, group to re-join coach and proceed back to hotel
22.30 Approximate arrival back to the hotel.

DAY 3 Thursday

AM Breakfast at Premier Inn packed lunches provided. This is the last meal included in your tour cost.
AM Check out and load luggage on to coach.
10.00 Thames river cruise Tower - Westminster
11.30 Flight on London Eye
12.30 Group to re-join coach and proceed to school
17.15 Approximate arrival at school.





Why?

- To leave primary school being the best version of themselves
- To reach their full potential
- To be confident in the Y7 curriculum
- It informs the child's secondary targets



AOB

- We have 31 signed up for London- we need 9 more children to make this visit happen

