

Welcome to our Y6 meeting



Thursday 29th September

Feel free to help yourself to a hot drink



WE ARE CREW



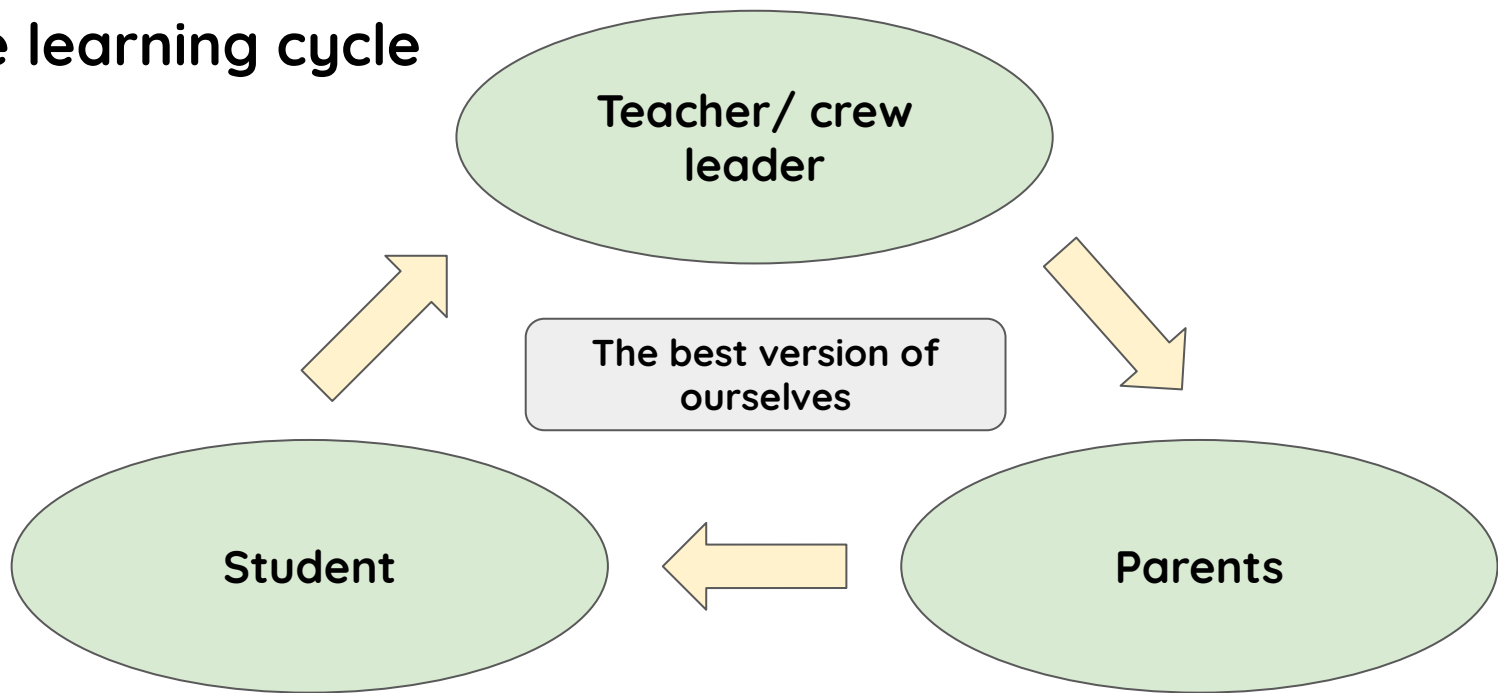
We are stronger together.



A MULTI-ACADEMY TRUST

www.xptrust.org

The learning cycle

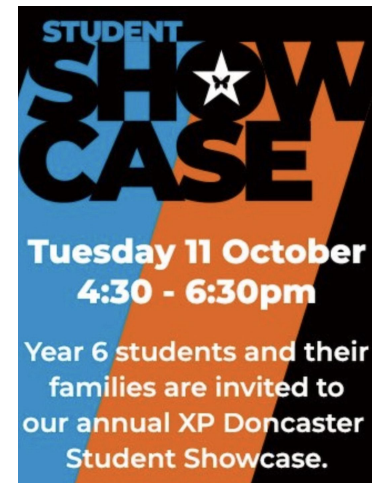


Secondary School applications

- Online application form
- The deadline for applications is the 31st of October.
- Parents must complete the application not the teacher.
- Mr Mumby and Mr Ambler will offer a drop in session 3pm-5pm on Monday 3rd October for school applications. (Classrooms)



The **national offer** date is the **1st March**, you will be notified via **email** (address you applied with)



Weekly timetable

Weekly Timetable

	8:45 - 9:15	9:15 - 11:15	11:15 - 11:30	11:30 - 12:00	12:00 - 12:30	12:30 - 13:15	13:15 - 14:15	14:15 - 14:40	14:40 - 15:00
Mon	CREW Targets	English/Expedition	[Grey vertical bar]	All Block	Accelerated Reader	[Grey vertical bar]	Maths	SPaG lesson	CREW
Tues	CREW Academic	English/Expedition		All Block	Accelerated Reader		Maths	CREW	
Wed	CREW Community	English/Expedition		All Block	Accelerated Reader		Maths	CREW	
Thurs	CREW Phase Assembly	English/Expedition		Maths	Maths		Maths Talk	CREW	
Fri	CREW AR Time	G Block inc XP Outdoors		G Block inc XP Outdoors	PE		FFT	CREW	

WE ARE CREW



www.xptrust.org



Y6 at a Glance....

**WE ARE
CREW**



We are stronger together

October	November	December
<p>(12th) School disco</p> <p>(10th) Bikeability- Groups 1 and 2 for details to follow</p> <p>(14th) Football tournament @ Trinity</p> <p>SPag monthly test</p> <p>Arithmetic monthly test</p>	<p>(W/C 31st) rest of the Bikeability groups- more details to follow</p> <p>(8th) Flu vaccinations</p> <p>(W/C 14th) Assessment week for Autumn term.</p> <p>(24th) Tag rugby @ Thornensians</p>	<p>(7th) Expedition PoL. Space Lecture- All children to attend please.</p> <p>Christmas concert @ Thorne Methodist Church (TBC)</p> <p>(16th) End of term</p>



www.xptrust.org



Y6 at a Glance....



January	February	March
(2nd) Start of Spring Term (9th) Booster sessions to begin	(10th) Half term begins	(8th) Class Photos (31st) Half Term



Y6 at a Glance....



April	May	June	July
(11th) School Starts	(W/C 8th) SATs week		(5th-7th) Residential



SATs Week- Monday 8th May

Grammar and punctuation test- 45 minutes

Spelling test- 20 minutes

Support for these tests:

- An interactive site to be launched soon!
- CGP revision books

**WE ARE
CREW**



We are stronger together



www.xptrust.org



SATs Week- Tuesday 9th May

- English reading paper- 60 minutes

Useful resources/ ideas

- CGP revision guides for reading
- Reading as frequently as possible (ideally to an adult) to develop stamina, accuracy and vocabulary knowledge.

**WE ARE
CREW**



We are stronger together



www.xptrust.org



SATs Week- Wednesday 10th May



- Maths- Arithmetic (Paper 1)- 30 minutes (number, fraction, calculation)
- Maths- Reasoning (paper 2)- 40 minutes (broader maths curriculum)

Useful resources/ ideas:

- Maths site (will be developed further) [Link](#)
- Maths CGP books
- TTRS (times tables)
- Weekly homework sheet (given out on a Friday)



www.xptrust.org



SATs Week- Thursday 11th May

- Maths- reasoning (paper 3)

Useful resources/ ideas:

- Maths site (will be developed further) [Link](#)
- Maths CGP books
- TTRS (times tables)
- Weekly homework sheet (given out on a Friday)



Spring Term - Booster Clubs



- Y6 Booster Clubs - Reading and Arithmetic
- This will be on offer in the Spring Term
- We would like all children to attend, we will aim to split the children into smaller groups so that we can give them extra support and attention.



When will I find out about my child's academic performance throughout the year?

- Academic Snapshot (After each assessment week) inc Star reader data
- Student Led Conference (January)
- SATs results (early July)



A MULTI-ACADEMY TRUST



www.xptrust.org

Year 6 and Attendance

Attendance expectations are high for our Year 6 students. We aim for at **least 97% attendance per Crew each week**.

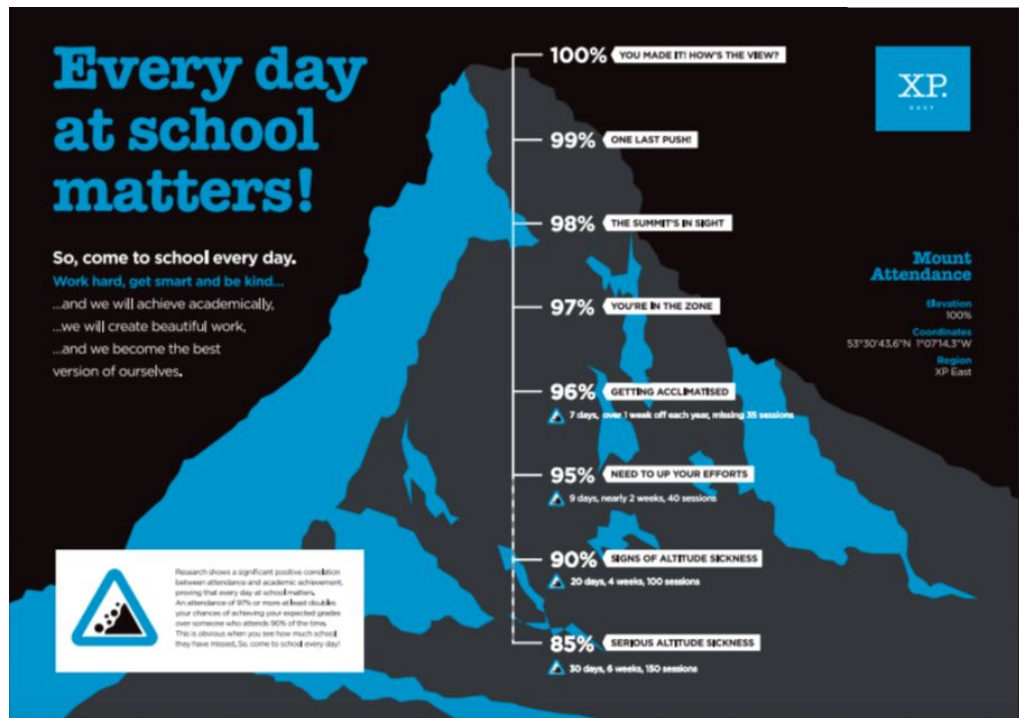
It is vital that Year 6 students attend school every day, due to our curriculum being so content heavy, it means one day off has a significant impact on their learning.

One day a week attendance must be a focus in Crew. Crew Leaders must discuss individual attendance and where praise students for their attendance and/or their improvement.

It is important that every student is aware of what their weekly attendance is.

Concerns around attendance must be raised with KS2 Phase Leads. This will then be discussed at our N4S meetings and appropriate actions taken.

A weekly attendance league is announced each week in the Whole School Community Meeting.



London Itinerary

DAY 1 Wednesday 05 July 2023

06.30 Meet coach at school.
07.00 Depart school and proceed to London.
11.45 Approximate arrival in London
12.30 Bus tour with David Drury
17.00 Evening meal at Jungle Cave.
19.00 Approximate arrival at Premier Inn

DAY 2 Thursday 06 July 2023

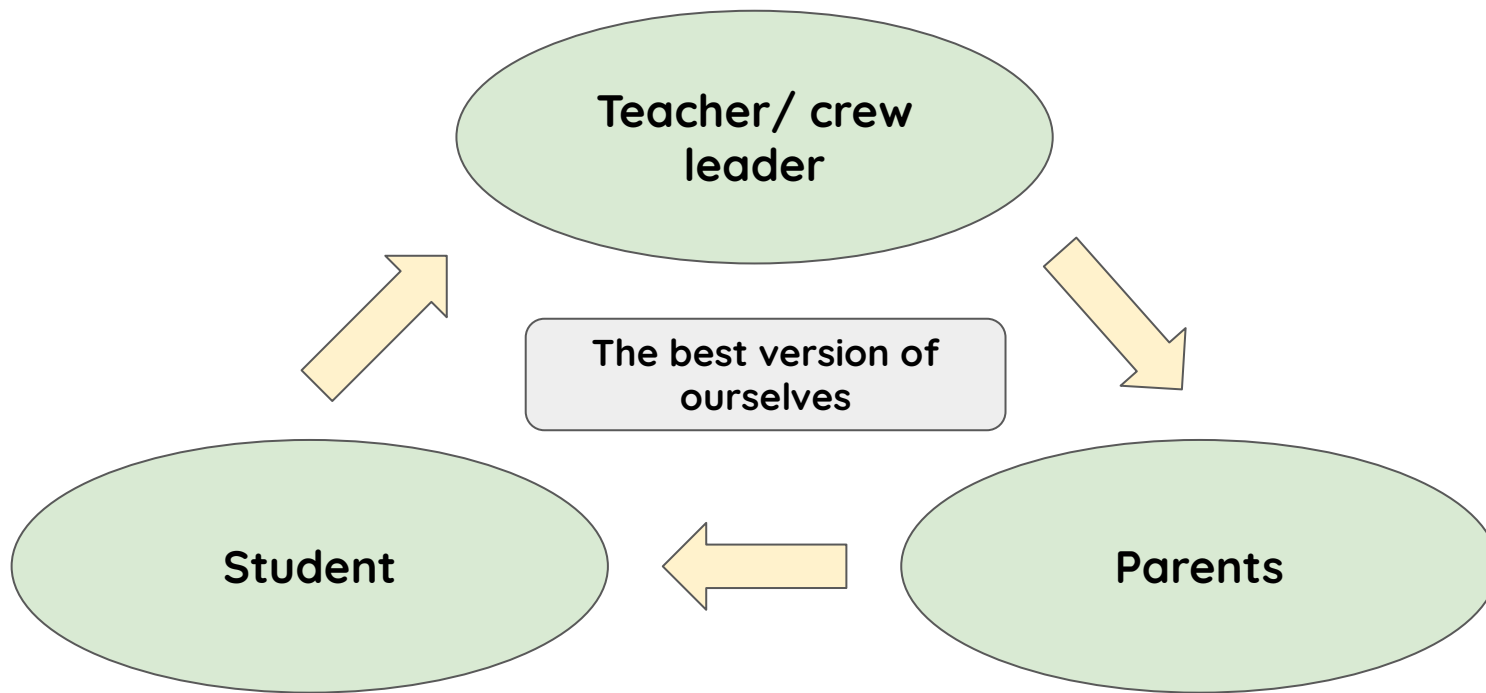
AM Breakfast at Premier Inn

10.00 Visit to Natural History Museum
13.00 Visit to Science Museum
15.45 Group to re-join coach and proceed to Central London
17.00 Evening meal at Pizza Express
19.30 Evening performance for a West End Show
21.15 Performance ends, group to re-join coach and proceed back to hotel
22.30 Approximate arrival back to the hotel.

DAY 3 Friday 07 July 2023

AM Breakfast at Premier Inn packed lunches provided. This is the last meal included in your tour cost.
AM Check out and load luggage on to coach.
10.00 Thames river cruise Tower – Westminster
11.30 Flight on London Eye
12.30 Group to re-join coach and proceed to school
17.15 Approximate arrival at school.





Why?

- To leave primary school being the best version of themselves
- To reach their full potential
- To be confident in the Y7 curriculum
- It informs the child's secondary targets



AOB

- Next payment for the residential due (£100- ParentPay)
- If you haven't signed a consent for Bikeability- please see Mr Ambler.
- CGP can be purchased through school- please order through ParentPay
(A text will be sent when this is set up)

